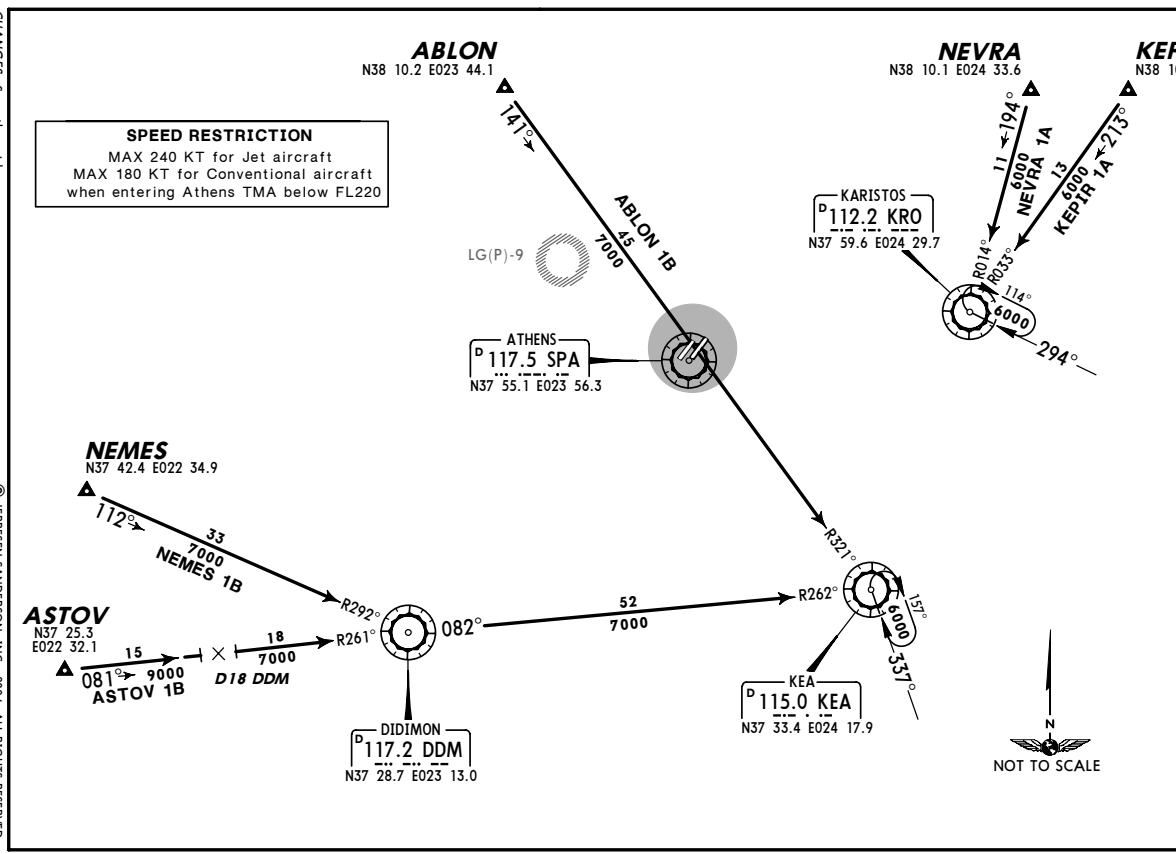


**LGAV/ATH**  
ELEFTERIOS VENIZELOS INTL 23 JUL 04 **20-2** EFF 5 AUG  
**JEPPESEN**  
**ATHENS, GREECE**  
**STAR**

ATIS <b>136.12</b>	Apf Elev <b>308'</b>	Alt Set: MB	Trans level: By ATC	Trans alt: 9000'
-----------------------	-------------------------	-------------	---------------------	------------------

**ABLON 1B [ABLO1B], ASTOV 1B [ASTO1B]**  
**KEPIR 1A [KEP1A], NEMES 1B [NEME1B]**  
**NEVRA 1A [NEVR1A]**  
**RWYS 21L/R ARRIVALS**

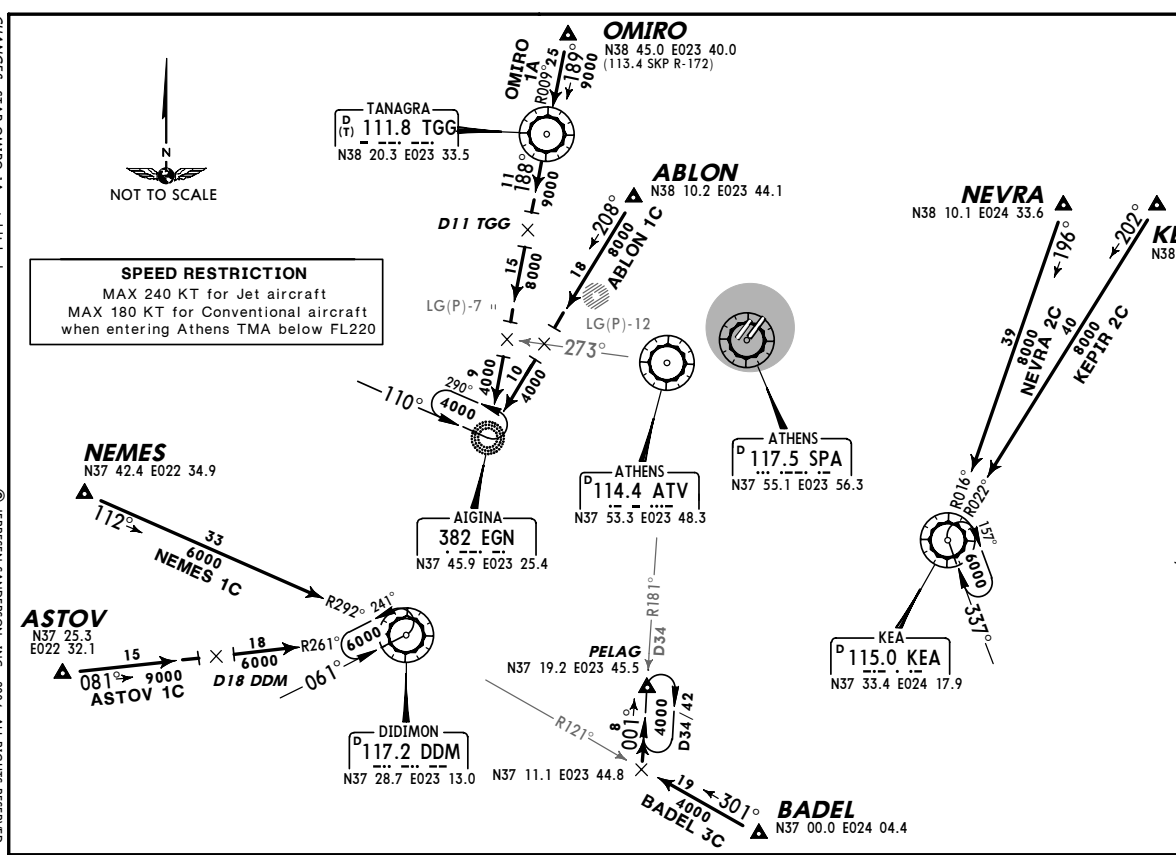


CHANGES: See other side.  
© JEPPESEN SANDERSON, INC., 2004. ALL RIGHTS RESERVED.

**LGAV/ATH**  
ELEFTERIOS VENIZELOS INTL 23 JUL 04 **20-2A** EFF 5 AUG  
**JEPPESEN**  
**ATHENS, GREECE**  
**STAR**

ATIS <b>136.12</b>	Apf Elev <b>308'</b>	Alt Set: MB	Trans level: By ATC	Trans alt: 9000'
-----------------------	-------------------------	-------------	---------------------	------------------

**ABLON 1C [ABLO1C], ASTOV 1C [ASTO1C]**  
**BADEL 3C [BADE3C], KEPIR 2C [KEP12C]**  
**NEMES 1C [NEME1C], NEVRA 2C [NEVR2C]**  
**OMIRO 1A [OMIR1A]**  
**RWYS 03L/R ARRIVALS**



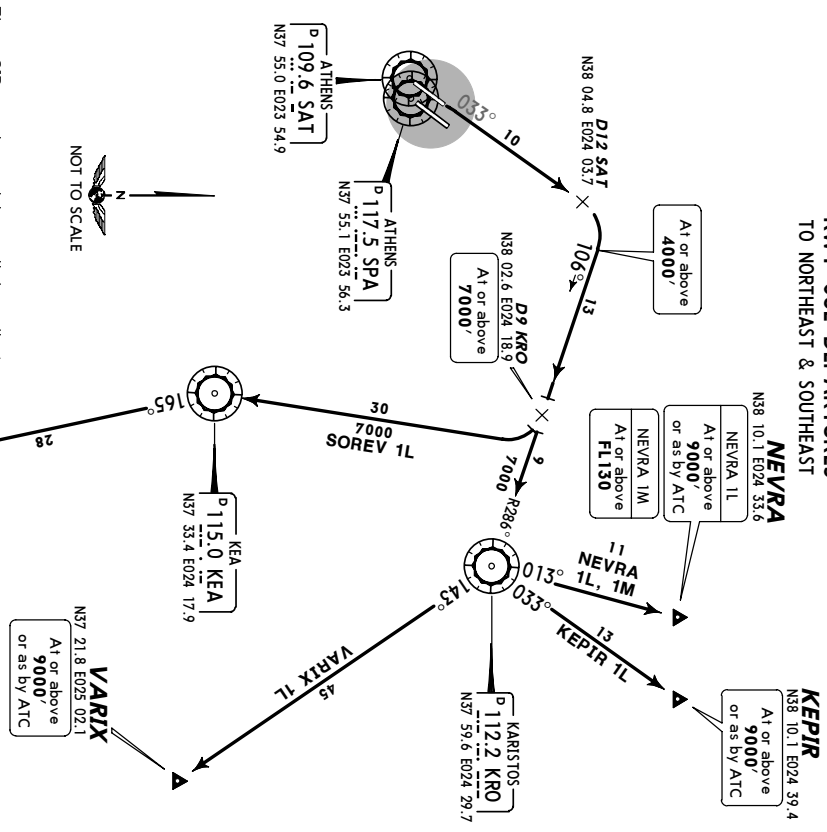
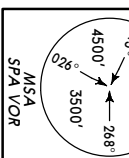
CHANGES: STAR OMIRO 1A established.  
© JEPPESEN SANDERSON, INC., 2004. ALL RIGHTS RESERVED.



**LGAV/ATH**  
**ELEFTHERIOS VENIZELOS INTL 24 JUN 05 (20-3)**  
**JEPPesen ATHENS, GREECE**  
**SID**

ATHENS Departure	128.95	Apt Elev 308'	Trans level: By ATC	Trans alt: 9000'
			MAX 210 KT for initial turns. Bank angle 15°.	

**KEPIR 1L [KEPI1L], NEVRA 1L [NEVR1L]  
 NEVRA 1M [NEVR1M], SOREV 1L [SOREV1L]  
 VARIX 1L [VAR11L]  
 RMY 03L DEPARTURES  
 TO NORTHEAST & SOUTHEAST**



These SIDs require a minimum climb gradient of 304' per NM (5%)

**KEPIR 1L, NEVRA 1L, SOREV 1L, VARIX 1L** up to 7000' for ATC purposes.

**NEVRA 1M** up to FL 130 for ATC purposes.

Gnd speed-KT	75	100	150	200	250	300
304' per NM	380	506	760	1013	1266	1519

Initial climb clearance 7000'

**INITIAL CLIMB**

Intercept	SAT R-033, at D12	SAT turn RIGHT, intercept KRO R-286 inbound at or above 4000'.
<b>SID</b>	<b>ROUTING</b>	
<b>KEPIR 1L</b>	On KRO R-286 inbound to KRO, turn LEFT, KRO R-033 to KEPIR.	
<b>NEVRA 1L, 1M</b>	On KRO R-286 inbound to KRO, turn LEFT, KRO R-013 to NEVRA.	
<b>SOREV 1L</b>	On KRO R-286 inbound to D9 KRO, turn RIGHT to KEA, KEA R-165 to SOREV.	
<b>VARIX 1L</b>	On KRO R-286 inbound to KRO, turn RIGHT, KRO R-143 to VARIX.	

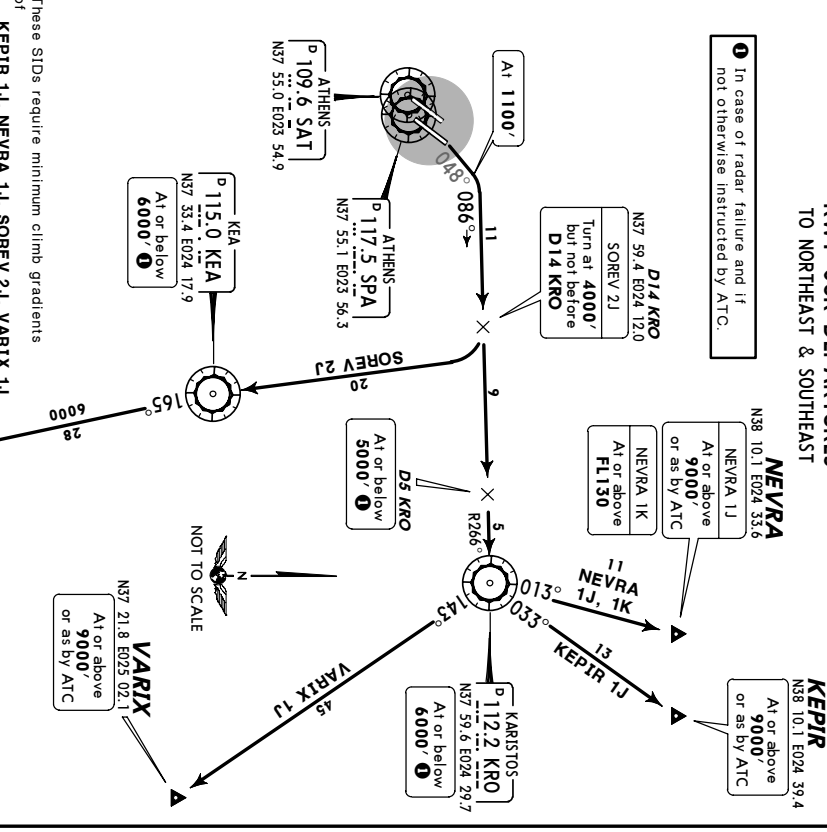
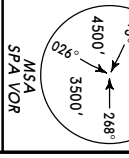
CHANGES: Frequency.

© JEPPESEN SANDERSON, INC., 2003, 2005. ALL RIGHTS RESERVED.

**LGAV/ATH**  
**ELEFTHERIOS VENIZELOS INTL 24 JUN 05 (20-3A)**  
**JEPPesen ATHENS, GREECE**  
**SID**

ATHENS Departure	128.95	Apt Elev 308'	Trans level: By ATC	Trans alt: 9000'
			MAX 210 KT for initial turns. Bank angle 15°.	

**KEPIR 1J [KEPI1J], NEVRA 1J [NEVR1J]  
 NEVRA 1K [NEVR1K], SOREV 2J [SOREV2J]  
 VARIX 1J [VAR11J]  
 RMY 03R DEPARTURES  
 TO NORTHEAST & SOUTHEAST**



These SIDs require minimum climb gradients of 352' per NM (5.8%) up to 5000', then to 304' per NM (5%) up to 6000' for ATC purposes.

**KEPIR 1J, NEVRA 1J, SOREV 2J, VARIX 1J** up to 5000', then to FL 130 for ATC purposes.

**NEVRA 1K** up to 5000', then to FL 130 for ATC purposes.

Gnd speed-KT	75	100	150	200	250	300
304' per NM	380	506	760	1013	1266	1519
352' per NM	441	587	881	1175	1468	1762

Initial climb clearance 6000'

**INITIAL CLIMB**

Climb on	SAT R-048 to 1100', turn RIGHT, intercept KRO R-266 inbound.
<b>SID</b>	<b>ROUTING</b>
<b>KEPIR 1J</b>	On KRO R-266 inbound to KRO, turn LEFT, KRO R-033 to KEPIR.
<b>NEVRA 1J, 1K</b>	On KRO R-266 inbound to KRO, turn LEFT, KRO R-013 to NEVRA.
<b>SOREV 2J</b>	On KRO R-266 inbound to 4000', but not before D14 KRO turn RIGHT to KEA, KEA R-165 to SOREV.
<b>VARIX 1J</b>	On KRO R-266 inbound to KRO, turn RIGHT, KRO R-143 to VARIX.

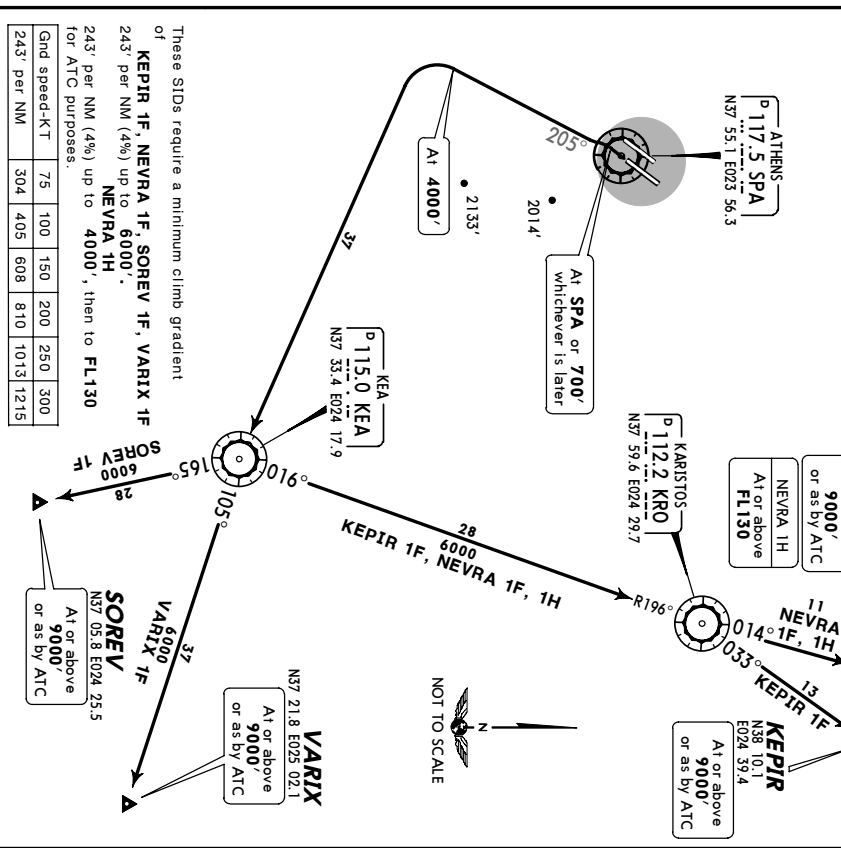
CHANGES: Frequency.

© JEPPESEN SANDERSON, INC., 2003, 2005. ALL RIGHTS RESERVED.

**LGAV/ATH**  
**ELEFTHERIOS VENIZELOS INTL** 24 JUN 05 **(20-38)** **JEPPESEN** **ATHENS, GREECE** **SID**

ATHENS Departure 128.95 Apt Elev 308' Trans level: By ATC Trans alt: 9000' MAX 210 KT for initial turns. Bank angle 15°.

**KEPIR 1F [KEPI1F], NEVRA 1F [NEVR1F]**  
**NEVRA 1H [NEVR1H], SOREV 1F [SORE1F]**  
**VARIX 1F [VAR11F]**  
**RWY 21L DEPARTURES**  
**TO NORTHEAST & SOUTHEAST**



These SIDs require a minimum climb gradient of **KEPIR 1F, NEVRA 1F, SOREV 1F, VARIX 1F** 243' per NM (4%) up to **6000'**, then to **NEVRA 1H** 243' per NM (4%) up to **4000'**, then to **FL130** for ATC purposes.

**SID**

**KEPIR 1F ①** At KEA turn LEFT, KEA R-016 to KRO, KRO R-033 to KEPIR.

**NEVRA 1F ①, 1H** At KEA turn LEFT, KEA R-016 to KRO, KRO R-013 to NEVRA.

**VARIX 1F ①** At KEA, KEA R-105 to VARIX.

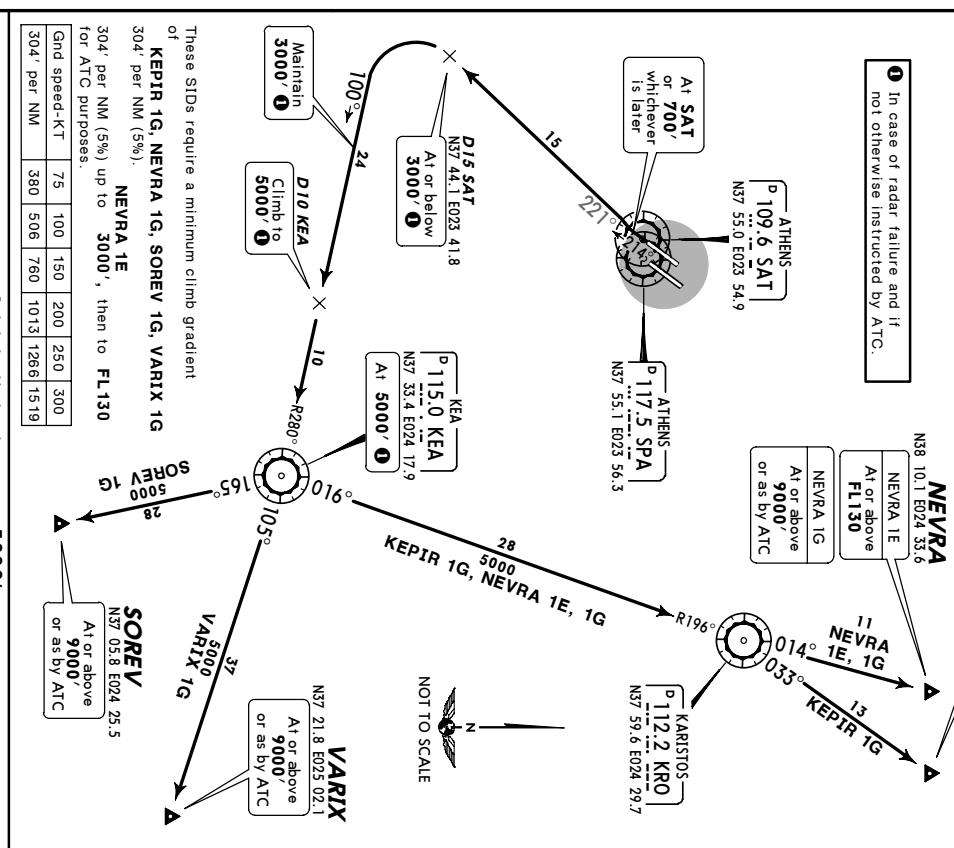
**①** If flight visibility is **10 km** and ceiling **5000'** or greater, aircraft may be requested to accept a VMC departure. When accepting, expect to turn LEFT as soon as practicable, maintain VMC and own terrain separation until passing **4000'** and climb to **6000'** and climb to **6000'** (SPA R-144/D2.9) and **2133'** (SPA R-167/D7.8). Standard separation will be provided between VMC & IFR aircraft. If unable to comply follow full SID procedures or as instructed by ATC.

CHANGES: Frequency.

**LGAV/ATH**  
**ELEFTHERIOS VENIZELOS INTL** 24 JUN 05 **(20-3C)** **JEPPESEN** **ATHENS, GREECE** **SID**

ATHENS Departure 128.95 Apt Elev 308' Trans level: By ATC Trans alt: 9000' MAX 210 KT for initial turns. Bank angle 15°.

**KEPIR 1G [KEPI1G], NEVRA 1E [NEVR1E]**  
**NEVRA 1G [NEVR1G], SOREV 1G [SORE1G]**  
**VARIX 1G [VAR11G]**  
**RWY 21R DEPARTURES**  
**TO NORTHEAST & SOUTHEAST**



These SIDs require a minimum climb gradient of **KEPIR 1G, NEVRA 1G, SOREV 1G, VARIX 1G** 304' per NM (5%) up to **3000'**, then to **FL130** for ATC purposes.

**SID**

**KEPIR 1G** At KEA turn LEFT, KEA R-016 to KRO, KRO R-033 to KEPIR.

**NEVRA 1G, 1E** At KEA turn LEFT, KEA R-016 to KRO, KRO R-013 to NEVRA.

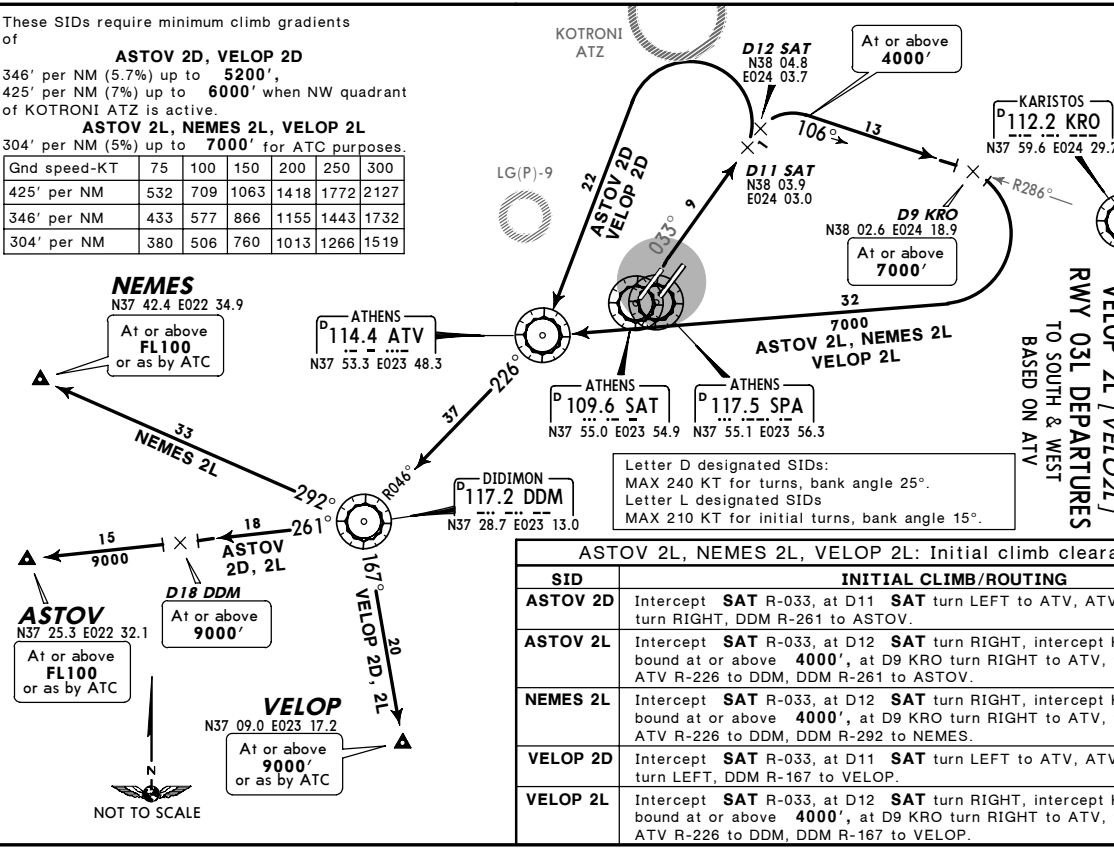
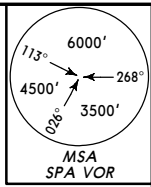
**SOREV 1G** At KEA turn RIGHT, KEA R-165 to SOREV.

**VARIX 1G** At KEA, KEA R-105 to VARIX.

CHANGES: Frequency.

**LGAV/ATH**  
ELEFTERIOS VENIZELOS INTL 24 JUN 05 (20-3D) **ATHENS, GREECE**

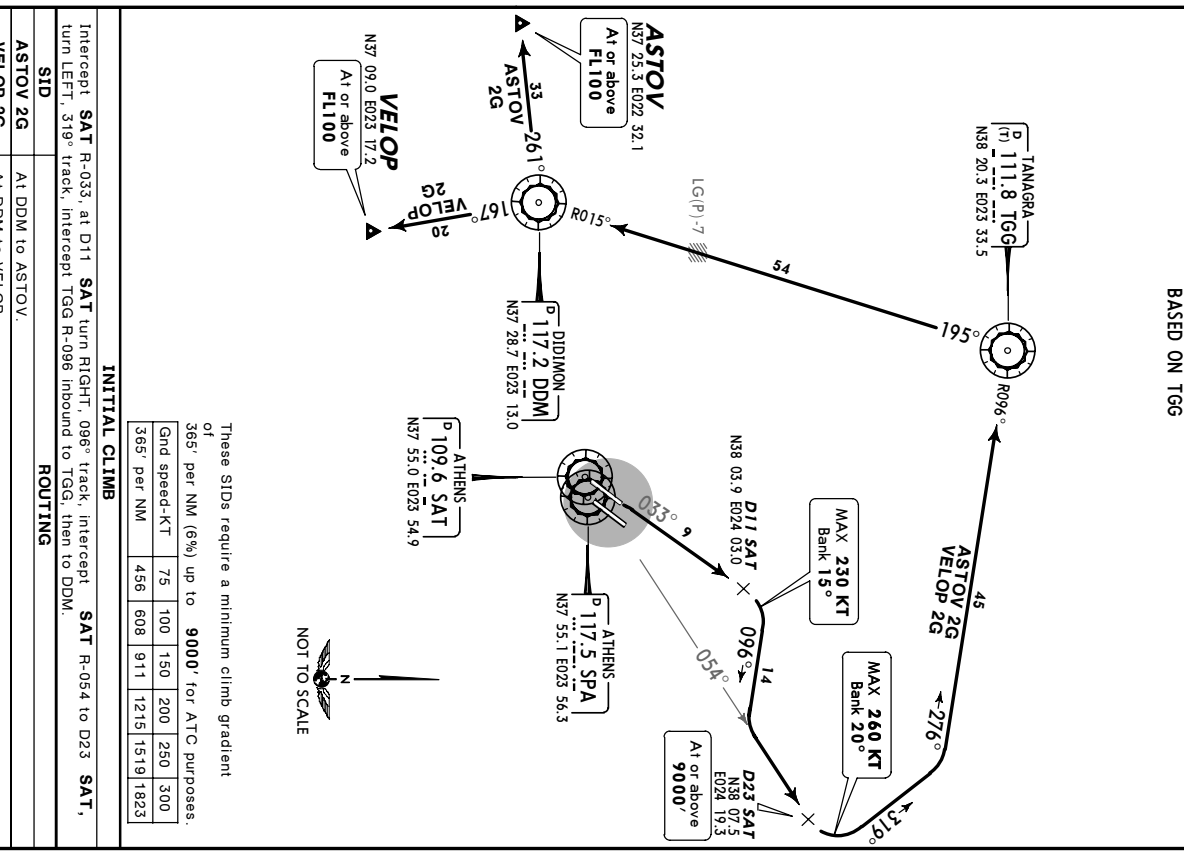
ATHENS Departure 128.95  
Apt Elev 308'  
Trans level: By ATC Trans alt: 9000'  
When RWYs 03L/R in use, flights planned via ASTOV 2D and VELOP 2D expect to depart from RWY 03L with a clearance to follow SID with a LEFT turn out.  
Flights unable to comply with required climb gradient shall inform ATC as soon as possible, a departure from RWY 03R can be expected.



CHANGES: Frequency. © JEPPESEN SANDERSON, INC., 2004, 2005. ALL RIGHTS RESERVED.

**LGAV/ATH**  
ELEFTERIOS VENIZELOS INTL 24 JUN 05 (20-3E) **ATHENS, GREECE**

ATHENS Departure 128.95  
Apt Elev 308'  
Trans level: By ATC Trans alt: 9000'

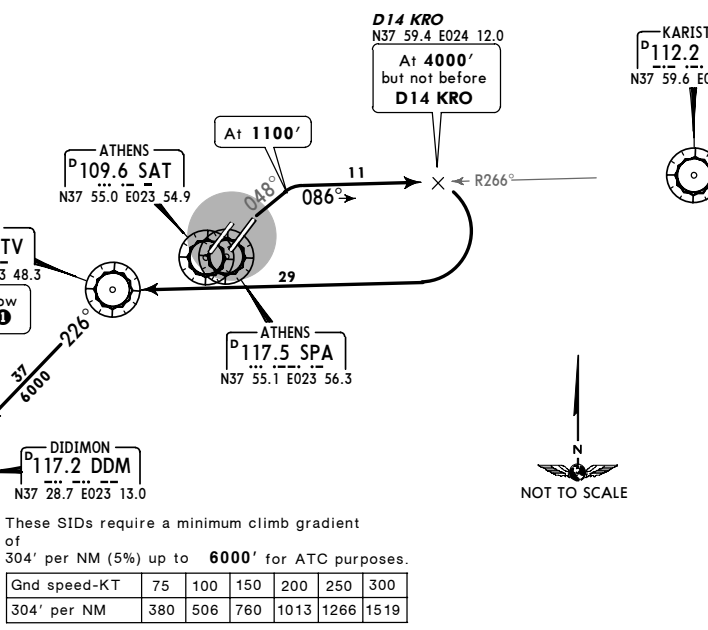
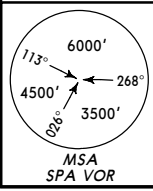


CHANGES: Frequency. © JEPPESEN SANDERSON, INC., 2004, 2005. ALL RIGHTS RESERVED.

**LGAV/ATH**  
**ELEFTHERIOS VENIZELOS INTL** 24 JUN 05 (20-3F)  
**ATHENS, GREECE**

ATHENS Departure 128.95  
 Apt Elev 308'  
 Trans level: By ATC Trans alt: 9000'

**ASTOV 2J [ASTO2J]  
 NEMES 2J [NEME2J]  
 VELOP 2J [VELO2J]  
 RMY 03R DEPARTURES  
 TO SOUTH & WEST  
 BASED ON ATV**



These SIDs require a minimum climb gradient of 304' per NM (5%) up to 6000' for ATC purposes.

Gnd speed-KT	75	100	150	200	250	300
304' per NM	380	506	760	1013	1266	1519

MAX 210 KT for initial turns. Bank angle 15°.

Initial climb clearance 6000'

**INITIAL CLIMB**

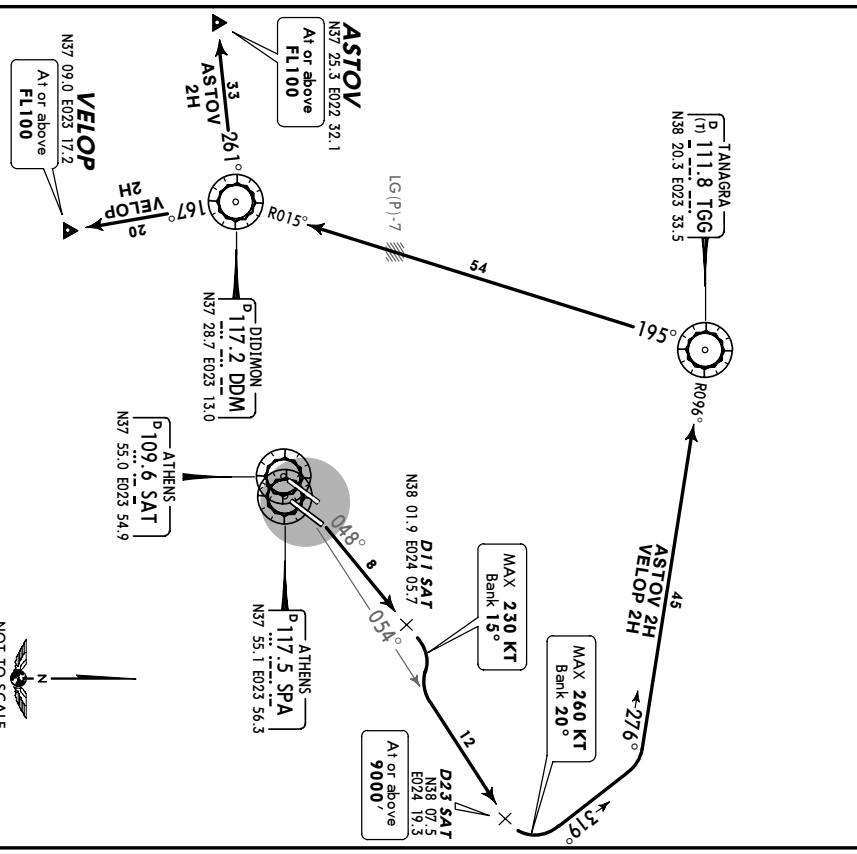
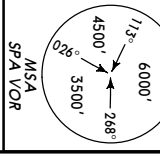
Climb on SAT R-048 to 1100', turn RIGHT, intercept KRO R-266 inbound, at 4000', but not before D14 KRO turn RIGHT to ATV, turn LEFT, ATV R-226 to DDM.

SID	ROUTING
ASTOV 2J	DDM R-261 to ASTOV.
NEMES 2J	DDM R-292 to NEMES.
VELOP 2J	DDM R-167 to VELOP.

**LGAV/ATH**  
**ELEFTHERIOS VENIZELOS INTL** 24 JUN 05 (20-3G)  
**ATHENS, GREECE**

ATHENS Departure 128.95  
 Apt Elev 308'  
 Trans level: By ATC Trans alt: 9000'

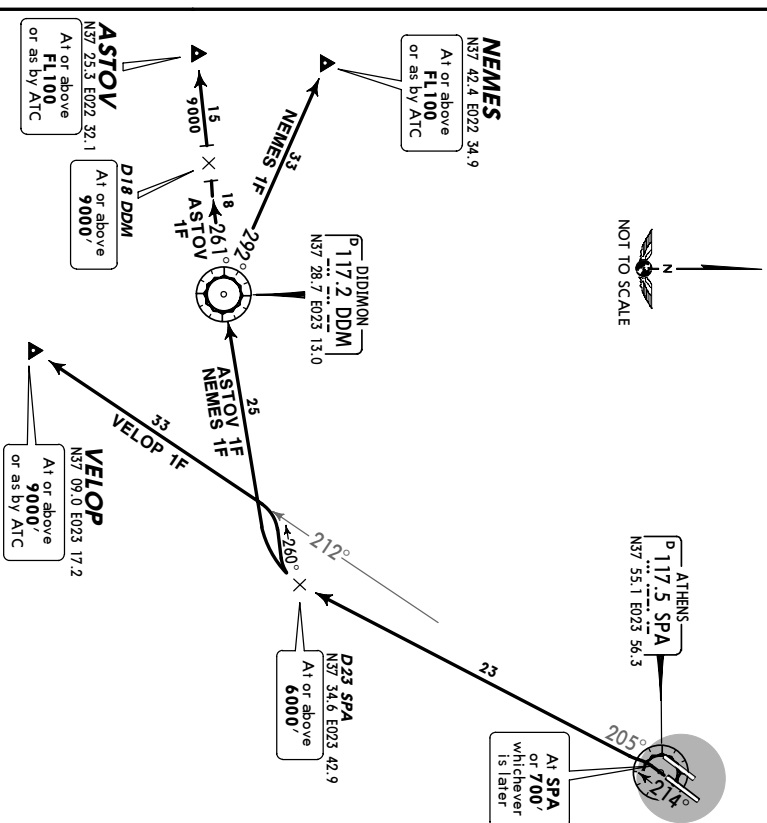
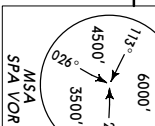
**ASTOV 2H [ASTO2H]  
 VELOP 2H [VELO2H]  
 RMY 03R DEPARTURES  
 TO SOUTH & WEST  
 BASED ON TGG**



**LGAV/ATH**  
**ELEFTHERIOS VENIZELOS INTL** 24 JUN 05 (20-3H) **ATHENS, GREECE**  
**SID**

ATHENS Departure 128.95 Apt Elev 308' Trans level: By ATC Trans alt: 9000'

**ASTOV 1F [ASTO1F], NEMES 1F [NEME1F]**  
**VELOP 1F [VELO1F]**  
**RWY 21L DEPARTURES**  
 TO SOUTH & WEST



These SIDs require a minimum climb gradient of 243' per NM (4%) up to 6000',  
 243' per NM

Gnd speed-KT	75	100	150	200	250	300
243' per NM	304	405	608	810	1013	1215

MAX 210 KT for initial turns. Bank angle 15°. Initial climb clearance 6000'

**INITIAL CLIMB**

Climb on 214° track to SPA or 700', whichever is later, intercept SPA R-205 to D23 SPA.

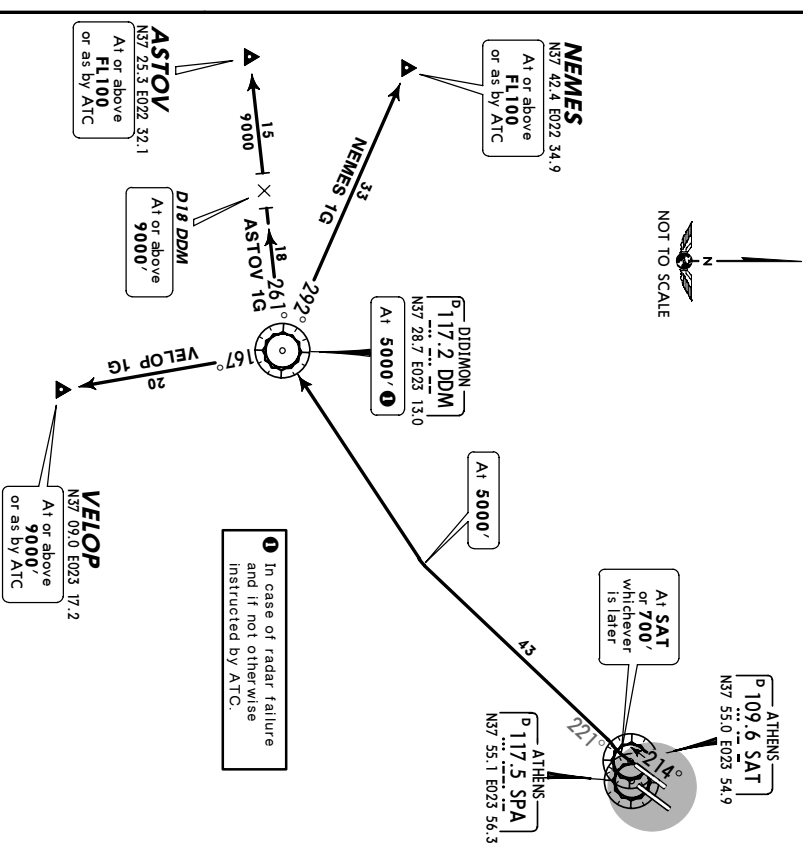
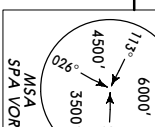
**ROUTING**

**ASTOV 1F** At D23 SPA turn RIGHT to DDM, DDM R-261 to ASTOV.  
**NEMES 1F** At D23 SPA turn RIGHT to DDM, DDM R-292 to NEMES.  
**VELOP 1F** At D23 SPA turn RIGHT, 280° track, intercept SPA R-212 to VELOP.

**LGAV/ATH**  
**ELEFTHERIOS VENIZELOS INTL** 24 JUN 05 (20-3J) **ATHENS, GREECE**  
**SID**

ATHENS Departure 128.95 Apt Elev 308' Trans level: By ATC Trans alt: 9000'

**ASTOV 1G [ASTO1G], NEMES 1G [NEME1G]**  
**VELOP 1G [VELO1G]**  
**RWY 21R DEPARTURES**  
 TO SOUTH & WEST



These SIDs require a minimum climb gradient of 304' per NM (5%).

Gnd speed-KT	75	100	150	200	250	300
304' per NM	380	506	760	1013	1266	1519

MAX 210 KT for initial turns. Bank angle 15°. Initial climb clearance 5000'

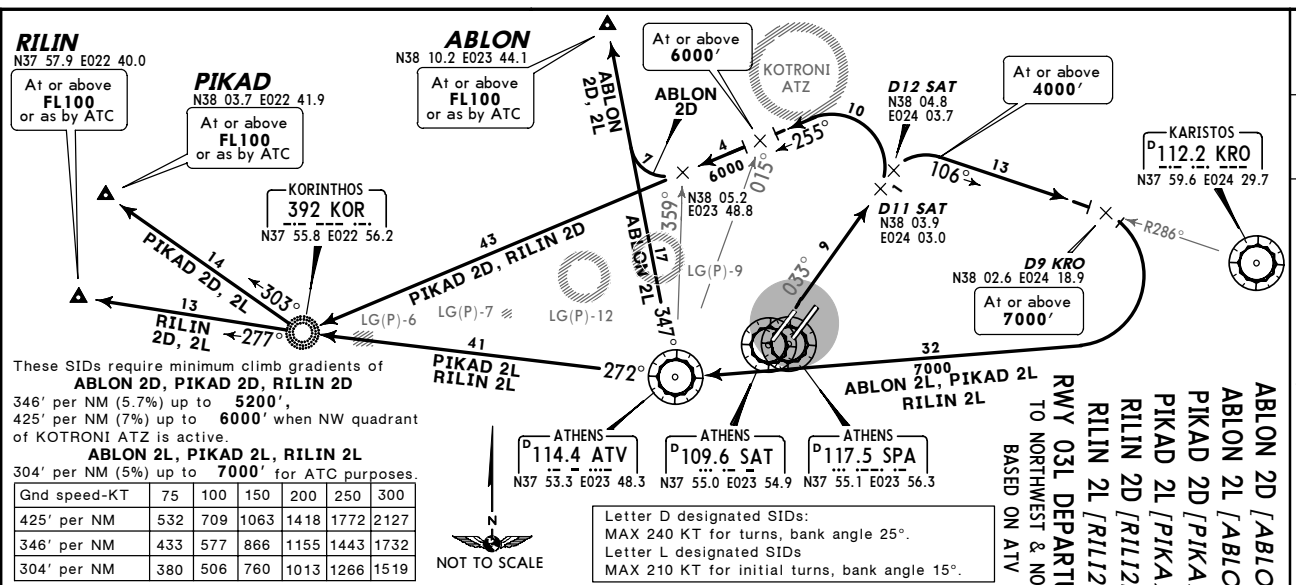
**INITIAL CLIMB**

Climb on 214° track to SAT or 700', whichever is later, intercept SAT R-221, at 5000' turn RIGHT to DDM.

**ROUTING**

**ASTOV 1G** At DDM, DDM R-261 to ASTOV.  
**NEMES 1G** At DDM, DDM R-292 to NEMES.  
**VELOP 1G** At DDM, DDM R-167 to VELOP.

ATHENS Departure 128.95  
 Apr Elev 308'  
 Trans level: By ATC Trans alt: 9000'  
 When RWY 03L/R in use expect to depart from RWY 03L with a clearance to follow SID with a LEFT turn out. Flights unable to comply with the required climb gradient shall inform ATC as soon as possible, a departure from RWY 03R can be expected.



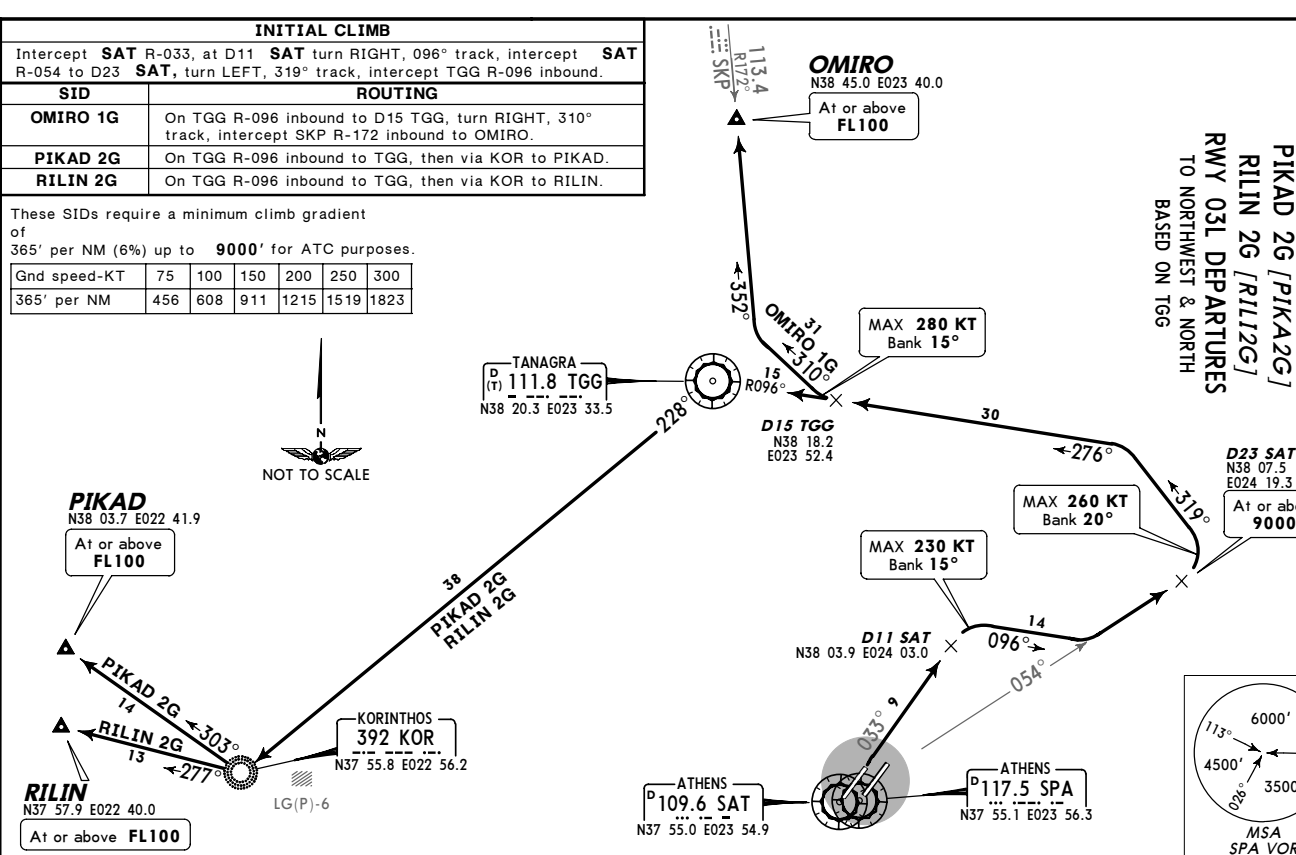
ABLON 2L, PIKAD 2L, RILIN 2L: Initial climb clearance 7000'

SID	INITIAL CLIMB/ROUTING
ABLON 2D	Intercept SAT R-033, at D11 SAT turn LEFT, intercept 255° bearing towards KOR, at ATV R-359 turn RIGHT, intercept ATV R-347 to ABLON.
ABLON 2L	Intercept SAT R-033, at D12 SAT turn RIGHT, intercept KRO R-286 inbound at or above 4000', at D9 KRO turn RIGHT to ATV, turn RIGHT, ATV R-347 to ABLON.
PIKAD 2D	Intercept SAT R-033, at D11 SAT turn LEFT to KOR, 303° bearing to PIKAD.
PIKAD 2L	Intercept SAT R-033, at D12 SAT turn RIGHT, intercept KRO R-286 inbound at or above 4000', at D9 KRO turn RIGHT to ATV, turn RIGHT, ATV R-272 to KOR, 303° bearing to PIKAD.
RILIN 2D	Intercept SAT R-033, at D11 SAT turn LEFT to KOR, 277° bearing to RILIN.
RILIN 2L	Intercept SAT R-033, at D12 SAT turn RIGHT, intercept KRO R-286 inbound at or above 4000', at D9 KRO turn RIGHT to ATV, turn RIGHT, ATV R-272 to KOR, 277° bearing to RILIN.

Gnd speed-KT	75	100	150	200	250	300
346' per NM	532	709	1063	1418	1772	2127
346' per NM	433	577	866	1155	1443	1732
304' per NM	380	506	760	1013	1266	1519



ATHENS Departure 128.95  
 Apr Elev 308'  
 Trans level: By ATC Trans alt: 9000'



OMIRO 1G [OMIR1G]  
 PIKAD 2G [PIKA2G]  
 RILIN 2G [RIL2G]  
 RWY 03L DEPARTURES TO NORTHWEST & NORTH BASED ON TGG

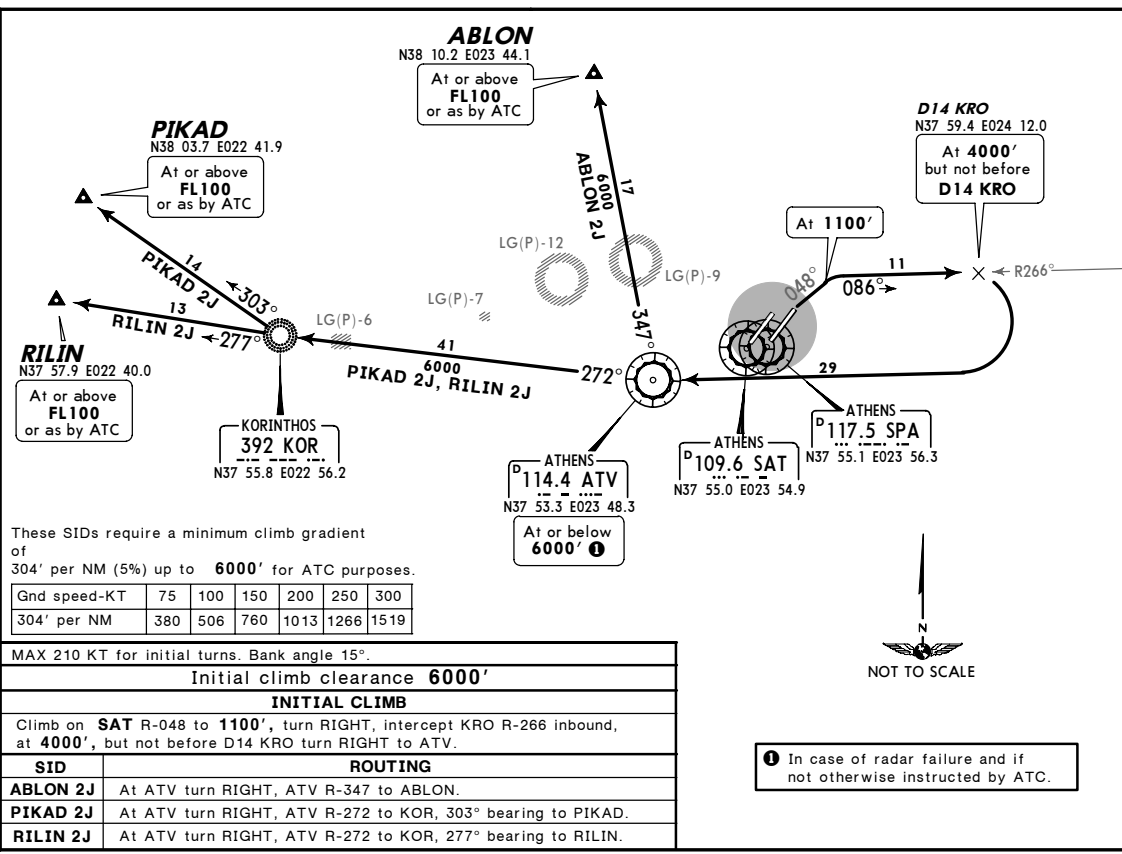
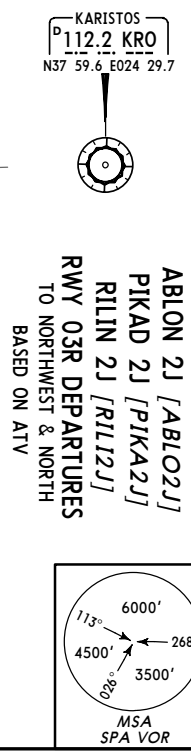
Gnd speed-KT	75	100	150	200	250	300
365' per NM	456	608	911	1215	1519	1823





**LGAV/ATH**  
**ELEFTHERIOS VENIZELOS INTL** 24 JUN 05 (20-3M)  
**ATHENS, GREECE**  
**SID**

ATHENS Departure  
 128.95  
 Apr Elev 308'  
 Trans level: By ATC Trans alt: 9000'



These SIDs require a minimum climb gradient of 304' per NM (5%) up to 6000' for ATC purposes.

Gnd speed-KT	75	100	150	200	250	300
304' per NM	380	506	760	1013	1266	1519

MAX 210 KT for initial turns. Bank angle 15°.

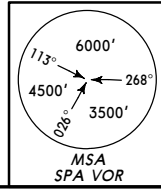
Initial climb clearance **6000'**

**INITIAL CLIMB**

Climb on SAT R-048 to 1100', turn RIGHT, intercept KRO R-266 inbound, at 4000', but not before D14 KRO turn RIGHT to ATV.

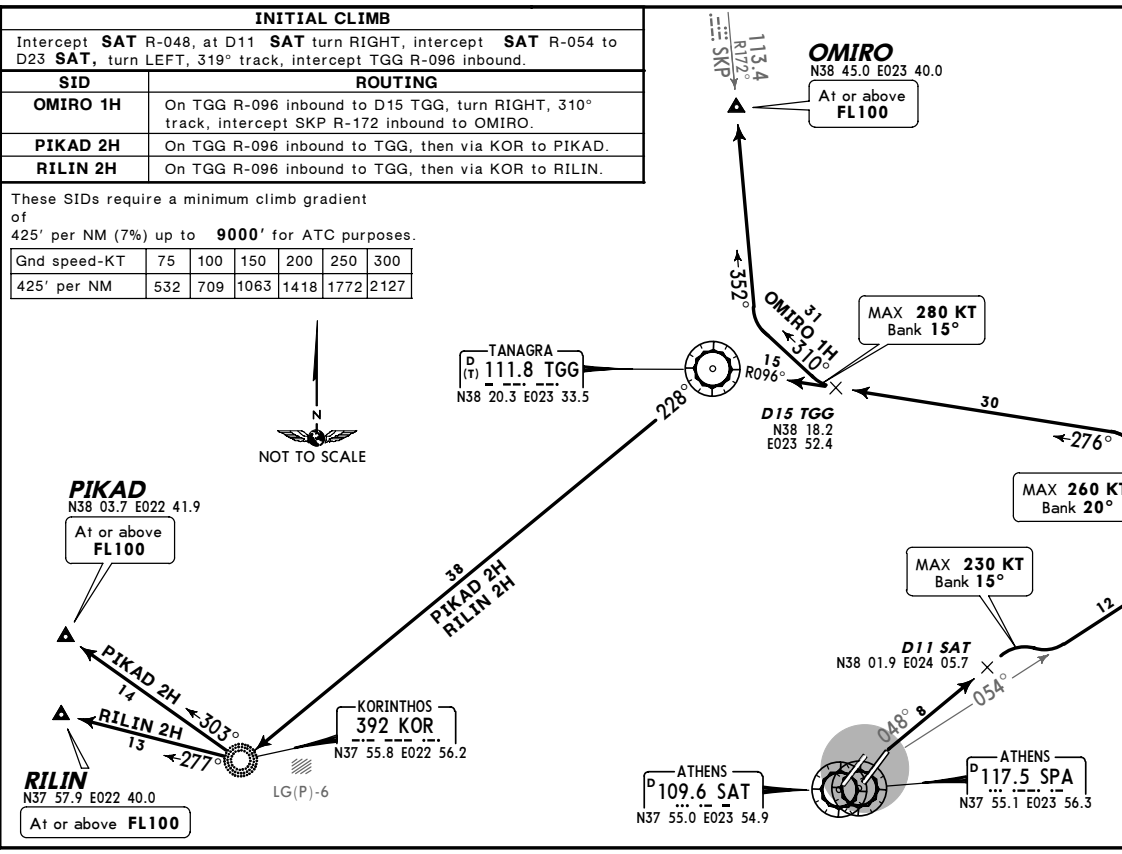
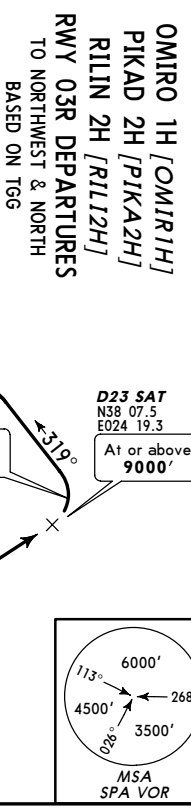
SID	ROUTING
ABLON 2J	At ATV turn RIGHT, ATV R-347 to ABLON.
PIKAD 2J	At ATV turn RIGHT, ATV R-272 to KOR, 303° bearing to PIKAD.
RILIN 2J	At ATV turn RIGHT, ATV R-272 to KOR, 277° bearing to RILIN.

In case of radar failure and if not otherwise instructed by ATC.



**LGAV/ATH**  
**ELEFTHERIOS VENIZELOS INTL** 24 JUN 05 (20-3M)  
**ATHENS, GREECE**  
**SID**

ATHENS Departure  
 128.95  
 Apr Elev 308'  
 Trans level: By ATC Trans alt: 9000'



These SIDs require a minimum climb gradient of 425' per NM (7%) up to 9000' for ATC purposes.

Gnd speed-KT	75	100	150	200	250	300
425' per NM	532	709	1063	1418	1772	2127

**INITIAL CLIMB**

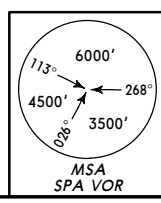
Intercept SAT R-048, at D11 SAT turn RIGHT, intercept SAT R-054 to D23 SAT, turn LEFT, 319° track, intercept TGG R-096 inbound.

SID	ROUTING
OMIRO 1H	On TGG R-096 inbound to D15 TGG, turn RIGHT, 310° track, intercept SKP R-172 inbound to OMIRO.
PIKAD 2H	On TGG R-096 inbound to TGG, then via KOR to PIKAD.
RILIN 2H	On TGG R-096 inbound to TGG, then via KOR to RILIN.

MAX 280 KT Bank 15°

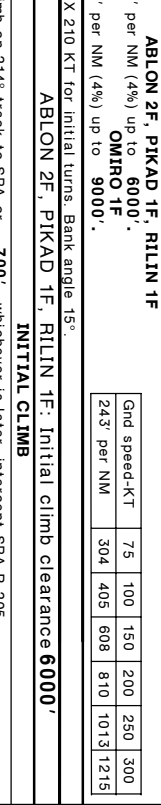
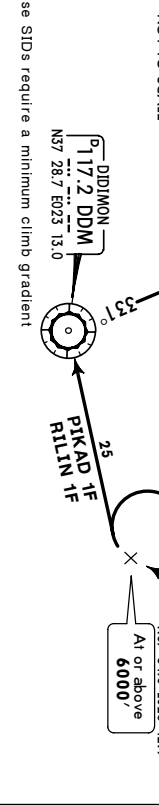
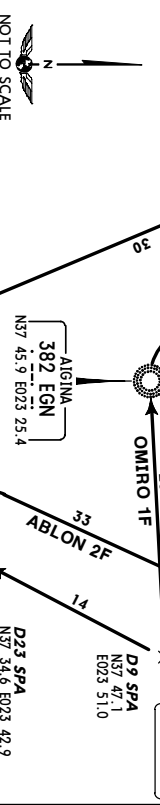
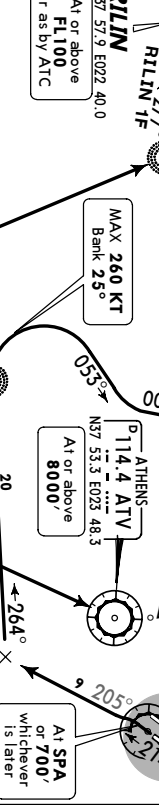
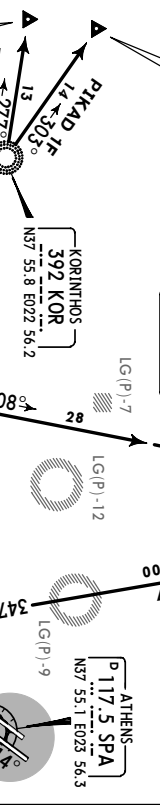
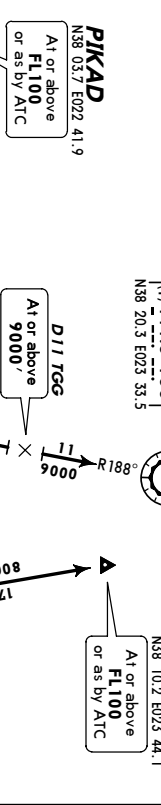
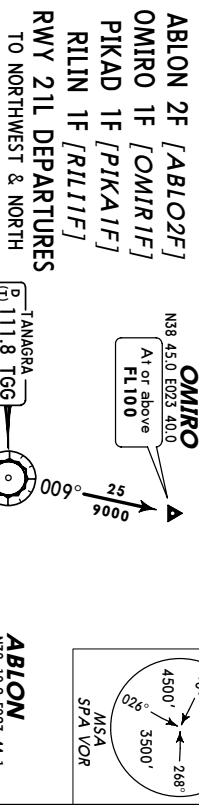
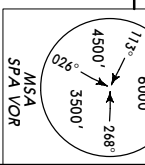
MAX 260 KT Bank 20°

MAX 230 KT Bank 15°



**LGAV/ATH**  
**ELEFTHERIOS VENIZELOS INTL 24 JUN 05 (20-3P)**  
**ATHENS, GREECE**  
**SID**

ATHENS Departure 128.95  
 Apr Elev 308' Trans level: By ATC Trans alt: 9000'



**ABLO 2F, PIKAD 1F, RILIN 1F**

Gnd speed-KT	75	100	150	200	250	300
243' per NM	304	405	608	810	1013	1215

**ABLO 2F, PIKAD 1F, RILIN 1F**

Initial climb clearance **6000'**

**INITIAL CLIMB**

Climb on 214° track to SPA or 700', whichever is later, intercept SPA R-205.

**ROUTING**

**SID**

**ABLO 2F** On SPA R-205 to D23 SPA, turn RIGHT to ATV, ATV R-347 to ABLO.

**OMIRO 1F** On SPA R-205 to D9 SPA, turn RIGHT, intercept 264° bearing to EGN, turn RIGHT, 053° track, intercept TGG R-188 inbound to TGG, TGG R-009 to OMIRO.

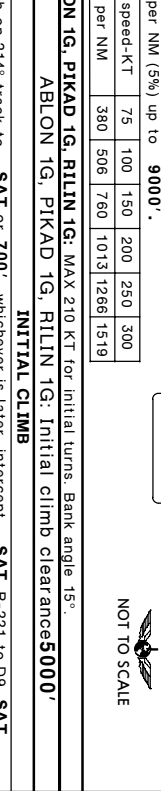
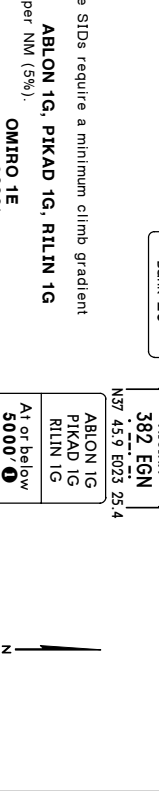
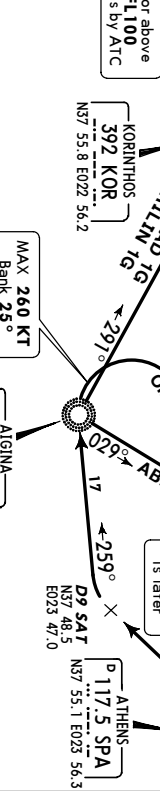
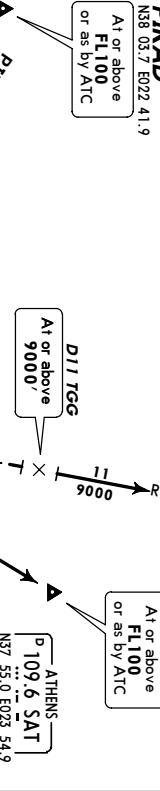
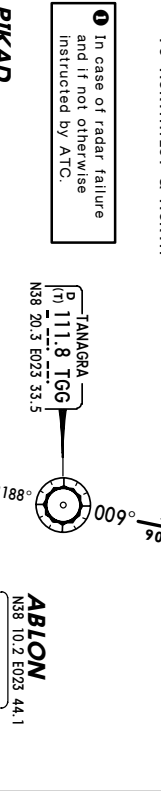
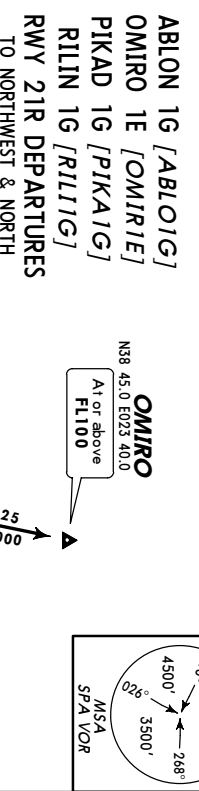
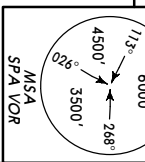
**PIKAD 1F** On SPA R-205 to D23 SPA, turn RIGHT to DDM, turn RIGHT to KOR, turn LEFT, 303° bearing to PIKAD.

**RILIN 1F** On SPA R-205 to D23 SPA, turn RIGHT to DDM, turn RIGHT to KOR, turn LEFT, 277° bearing to RILIN.

CHANGES: Frequency. © JEPPESEN SANDERSON, INC., 2004, 2005. ALL RIGHTS RESERVED.

**LGAV/ATH**  
**ELEFTHERIOS VENIZELOS INTL 24 JUN 05 (20-3Q)**  
**ATHENS, GREECE**  
**SID**

ATHENS Departure 128.95  
 Apr Elev 308' Trans level: By ATC Trans alt: 9000'



**ABLO 1G, PIKAD 1G, RILIN 1G**

Gnd speed-KT	75	100	150	200	250	300
304' per NM	380	506	760	1013	1266	1519

**ABLO 1G, PIKAD 1G, RILIN 1G**

Initial climb clearance **5000'**

**INITIAL CLIMB**

Climb on 214° track to SAT or 700', whichever is later, intercept SAT R-221 to D9 SAT.

**ROUTING**

**SID**

**ABLO 1G** At D9 SAT turn RIGHT to EGN, turn RIGHT, 029° bearing to ABLO.

**OMIRO 1E** At D9 SAT turn RIGHT, intercept 259° bearing to EGN, turn RIGHT, 053° track, intercept TGG R-188 inbound to TGG, TGG R-009 to OMIRO.

**PIKAD 1G** At D9 SAT turn RIGHT to EGN, turn RIGHT, 291° bearing to KOR, 303° bearing to PIKAD.

**RILIN 1G** At D9 SAT turn RIGHT to EGN, turn RIGHT, 291° bearing to KOR, 277° bearing to RILIN.

CHANGES: Frequency. © JEPPESEN SANDERSON, INC., 2004, 2005. ALL RIGHTS RESERVED.

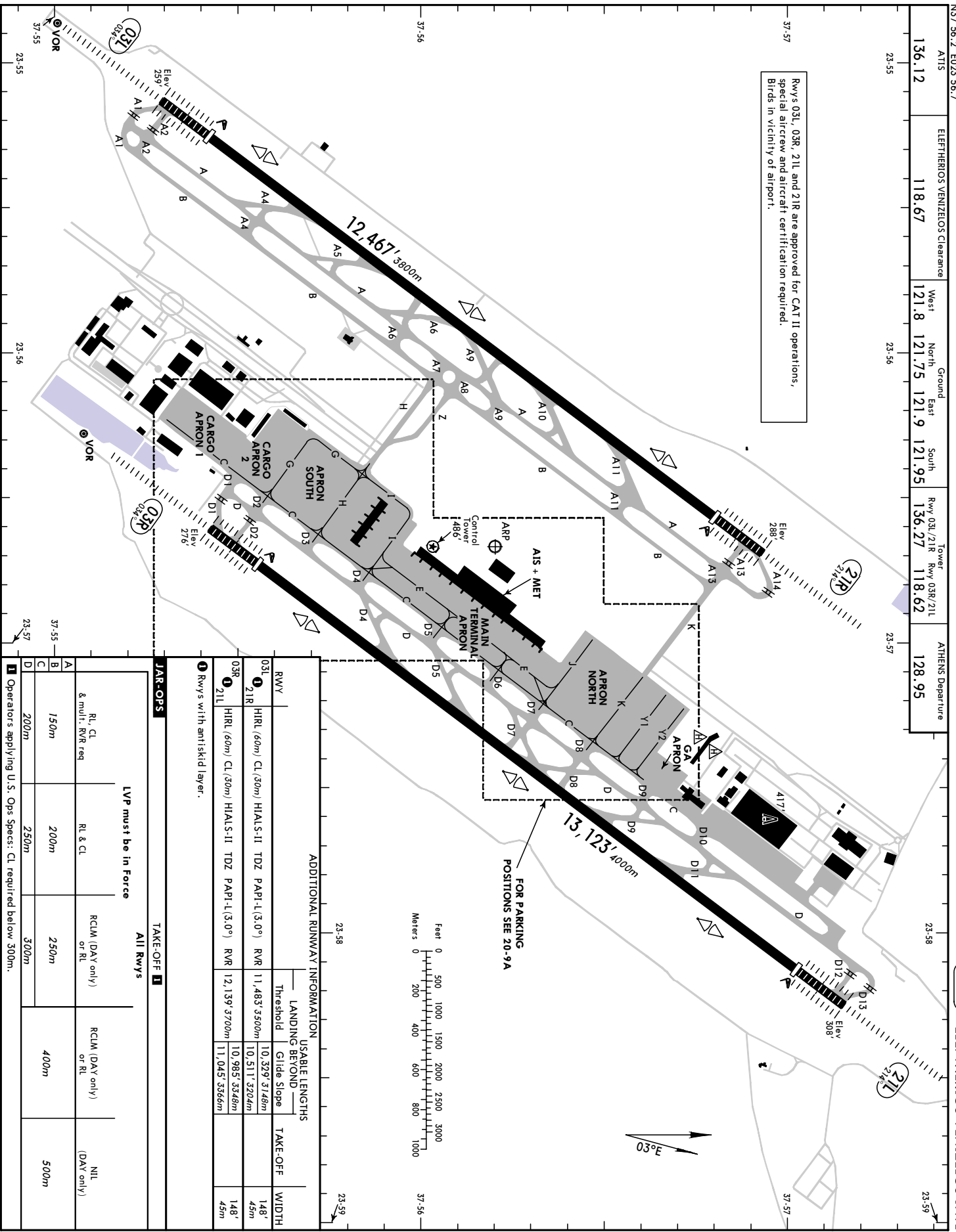
Notice: After 13.10.2005 0901Z this chart should not be used without first checking JeppView or NOTAMs.

**LGAV/ATH**  
 Apt Elev **308'**  
 NS756.2 E02356.7

**JEPPesen**  
 24 JUN 05 **20-9**  
**ATHENS, GREECE**  
 ELEFTHERIOS VENIZELOS INTL

ATIS	ELEFTHERIOS VENIZELOS Clearance				Tower	ATHENS Departure
	136.12	118.67	West 121.8	North 121.75		
				Rwy 03L/21R	Rwy 03R/21L	
				136.27	118.62	128.95

Rwys 03L, 03R, 21L and 21R are approved for CAT II operations, special aircrew and aircraft certification required. Birds in vicinity of airport.



**ADDITIONAL RUNWAY INFORMATION**

RWY	LANDING BEYOND THRESHOLD		USABLE LENGTHS		TAKE-OFF WIDTH
	Threshold	Glide Slope	Threshold	Glide Slope	
03L ① 21R	HIRL (60m) CL (30m) HIALS-II TDZ PAPI-L (3.0°)	RVR 11,483 3500m	10,329 3148m	148'	148'
03R ① 21L	HIRL (60m) CL (30m) HIALS-II TDZ PAPI-L (3.0°)	RVR 12,139 3700m	10,511 3204m	148'	45m

① Rwys with antiskid layer.

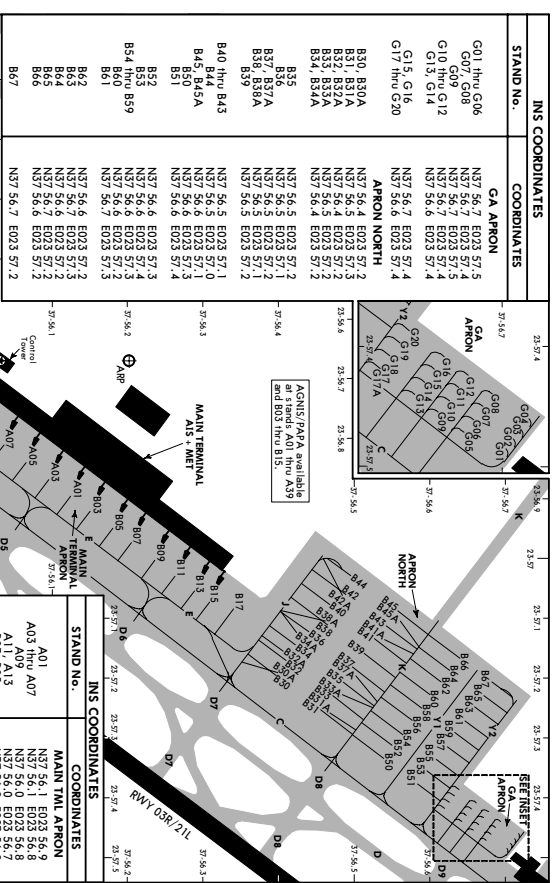
**JAR-OPS TAKE-OFF**

L	All Rwys		RCLM (DAY only) or RL	RCLM (DAY only) or RL	NIL (DAY only)
	Operator's applying U.S. Ops Specs. CL required below 300m.	LVP must be in Force			
A	150m	200m	250m	400m	500m
B	150m	200m	250m	400m	500m
C	200m	250m	300m	400m	500m
D	200m	250m	300m	400m	500m

CHANGES: Communications.

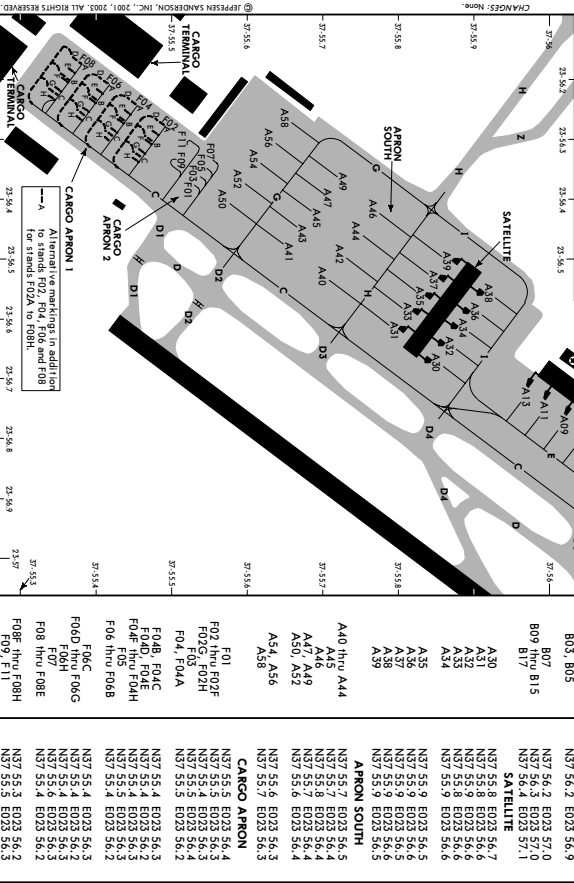
© JEPPesen SANDERSON, INC., 2001, 2005. ALL RIGHTS RESERVED.

LGAV/ATH



STAND No.	INS COORDINATES
<b>GA APRON</b>	
G01 thru G06	N37 56.7 E023 57.5
G07, G08	N37 56.7 E023 57.4
G09	N37 56.7 E023 57.4
G10 thru G12	N37 56.7 E023 57.4
G13, G14	N37 56.6 E023 57.4
G15, G16	N37 56.7 E023 57.4
G17 thru G20	N37 56.6 E023 57.4
<b>APRON NORTH</b>	
B30, B30A	N37 56.4 E023 57.2
B31, B31A	N37 56.5 E023 57.3
B32, B32A	N37 56.4 E023 57.2
B33, B33A	N37 56.4 E023 57.2
B34, B34A	N37 56.4 E023 57.2
B35	N37 56.5 E023 57.2
B36	N37 56.5 E023 57.2
B37, B37A	N37 56.5 E023 57.2
B38, B38A	N37 56.5 E023 57.1
B39	N37 56.5 E023 57.2
B40 thru B43	N37 56.5 E023 57.1
B44	N37 56.5 E023 57.0
B45, B45A	N37 56.6 E023 57.3
B50	N37 56.6 E023 57.3
B51	N37 56.6 E023 57.4
B52	N37 56.6 E023 57.3
B53	N37 56.6 E023 57.4
B54 thru B59	N37 56.6 E023 57.2
B60	N37 56.7 E023 57.2
B61	N37 56.7 E023 57.2
B62	N37 56.6 E023 57.2
B63	N37 56.6 E023 57.2
B64	N37 56.6 E023 57.2
B65	N37 56.7 E023 57.2
B66	N37 56.6 E023 57.2
B67	N37 56.7 E023 57.2

STAND No.	INS COORDINATES
<b>MAIN TML APRON</b>	
A01	N37 56.1 E023 56.9
A03 thru A07	N37 56.1 E023 56.8
A09	N37 56.0 E023 56.8
A13	N37 56.0 E023 56.8
B01, B05	N37 56.2 E023 56.9
B07	N37 56.2 E023 57.0
B09, B15	N37 56.4 E023 57.1
<b>SATELLITE</b>	
A30	N37 55.8 E023 56.7
A31	N37 55.8 E023 56.6
A32	N37 55.8 E023 56.6
A34	N37 55.9 E023 56.6
A35	N37 55.9 E023 56.6
A36	N37 55.9 E023 56.6
A37	N37 55.9 E023 56.6
A38	N37 55.9 E023 56.6
A39	N37 55.9 E023 56.6
<b>APRON SOUTH</b>	
A40 thru A44	N37 55.7 E023 56.5
A45	N37 55.7 E023 56.5
A46	N37 55.8 E023 56.4
A47, A49	N37 55.7 E023 56.4
A50, A52	N37 55.6 E023 56.4
A54, A56	N37 55.6 E023 56.3
A58	N37 55.7 E023 56.3



STAND No.	INS COORDINATES
<b>CARGO APRON</b>	
F01	N37 55.5 E023 56.4
F02 thru F06F	N37 55.5 E023 56.3
F07	N37 55.5 E023 56.4
F08	N37 55.5 E023 56.4
F09, F11	N37 55.5 E023 56.3

LGAV/ATH

**JEPPESEN**  
25 OCT 02  
EFT 31 OCT 02

(20-9B)

ATHENS, GREECE  
ELEFTHERIOS VENIZELOS INTL

### LOW VISIBILITY PROCEDURES (LVP)

During CAT II operations, special LVP will be applied. Pilots will be informed when these procedures are in operation by ATIS or RTF.

Stop bars are operated during CAT II operations.  
Pilots will not be refused permission to land or take-off on "pilots discretion", solely because of bad weather conditions.

#### Departing Acft

ATC will require departing acft to use the following CAT II holding points:  
RWY 03L: A1, A2  
RWY 21L: D12, D13  
RWY 03R: D1, D2  
RWY 21R: A13, A14

#### Arriving Acft

All appropriate rwy exits are illuminated, and pilots should use the first convenient exit. Rwy vacaton will be assessed when the acft has passed the last of the alternate yellow and green centerline lights. These lights denote the extent of the ILS sensitive area.  
Landed acft are requested to report clear of the colour coded centerline lights to indicate that the acft has vacated the ILS sensitive area.

### START-UP, TAXI & PARKING PROCEDURES

#### 1. GROUND MOVEMENT

All taxiing acft shall follow the yellow taxi centerline or the acft stand lead-in line. No deviations or short-cuts are permitted unless guided by a Leader van (FOLLOW ME car).

Acft are permitted to taxi only if permanent radio contact with ATC can be maintained during the entire taxi manoeuvre, unless guided by a FOLLOW ME car. The pilot shall always adhere to the signals of the FOLLOW ME car.

Acft may leave nose-in acft stands only by the aid of towing trucks. Reverse thrust or variable pitch propellers shall not be used. Acft operators shall make suitable arrangements.

Acft are permitted to taxi only at the indispensable minimum engine speed. In order to avoid any damage, acft types L-1011, DC-10 and MD-11 are not allowed to increase the power of engine no. 2 beyond it's idle motion speed when taxiing in the vicinity of buildings.

Movement of B777-300 is restricted to specific taxiways and acft stands. In order to keep the required minimum edge clearance, judgemental oversteer shall be used.

#### 2. SURFACE MOVEMENT GUIDANCE CONCEPT

The twy centerline lights within the ILS sensitive area from rwy 03R/21L towards twy D and from rwy 03L/21R towards twy A are colour coded (yellow/green). Landed acft are requested to report clear of the colour coded centerline lights to indicate that the acft has vacated the ILS sensitive area.

**Intermediate twy holding position lights** operate together with the centerline lighting and consist of 3 unidirectional surface lights showing amber in the direction of approach to the intersection.

If the traffic situation requires, acft may be instructed to hold at a specific intermediate holding position. If no such instruction is given, acft may taxi across the intermediate holding position marking without a specific clearance.

**Stop bars** are operated independently of the centerline lighting and consist of unidirectional surface lights showing red in the direction of approach to a taxi holding position or an intersection. Taxiing across stop bars is strictly prohibited when they are switched on. Clearances of any kind do not cover permission for taxiing across an operating stop bar.

#### Taxiing on acft stand taxi lanes

Twy E is an acft stand taxi lane with reduced minimum separation distances between taxi centerline and objects. The separation distance between the centerline and objects is a minimum of 139' (42.5m).  
Due to reduced wing tip-clearance adhere strictly to the yellow twy centerlines. Taxi speed to be adjusted accordingly.

LGAV/ATH

**JEPPESEN**  
25 OCT 02  
EFT 31 OCT 02

(20-9C)

ATHENS, GREECE  
ELEFTHERIOS VENIZELOS INTL

### PROCEDURES FOR DEPARTING ACFT

#### Start-up & ATC clearance

Pilots shall request clearance for starting the engines and ATC clearance on ELEFTHERIOS VENIZELOS Clearance. Request for ATC clearance may take place at the earliest 10 minutes prior to engine start-up. Upon receiving start-up and ATC clearance, pilots will be instructed to contact the appropriate frequency (ELEFTHERIOS VENIZELOS Ground North or South) for push-back and taxi or for taxi clearance (where push-back is not necessary). Pilots shall inform ELEFTHERIOS VENIZELOS Ground, if unable to be ready to taxi within 10 mins from start-up time.

#### Push-back & taxi-out procedures

Push-back or taxi clearance from a position may only be requested if the pilot can perform the manoeuvre immediately.  
When pilots request push-back and/or taxi, they shall indicate their acft parking stand. Starting up engines for acft requiring push-back is commenced when the acft is aligned on the twy centerline or when clearing the apron service road, in order to protect personnel and equipment from jet-blats.

#### 4. PROCEDURES FOR ARRIVING ACFT

If the crew realizes, when taxiing into a nose-in position equipped with AGNIS/PAPA, that the latter is switched off or out of order, the acft shall be stopped immediately. Malfunctioning shall be reported to ELEFTHERIOS VENIZELOS Ground, waiting for instructions.  
Parking of acft at stands not provided with AGNIS/PAPA is only permitted under the instruction of a marshaller.

#### 5. ACFT TOWING

Towing of acft requires the prior permission of ATC. Towed acft should always be guided by a FOLLOW ME car.  
During night hours or when LVP in operation, towed acft should be illuminated.

#### 6. USE OF GA APRON

Arriving acft taxiing on the GA apron, will be guided by a FOLLOW ME car. After receiving an ATC clearance, departing acft taxiing out of the GA apron is performed on pilots's own responsibility.

#### Rotorcraft

On approaches and departures overflying of other acft at low heights is prohibited.

### ACFT DE/ANTI-ICING

Acft de/anti-icing activities are performed under the responsibility of the acft operator and/or Ground handler. Acft de/anti-icing is allowed at all parking stands. Prior coordination with the Airport company (Airport Services Operations Center) is necessary.

### ENGINE RUN-UP

Run-ups require the prior permission by the Airport Company (ADO) and should be performed between 0700 LT and 2300 LT.  
Engine run-up on more than ground idle shall be conducted on twy B between links A2-A4 and A11-A13 provided that:  
- Prior approval is obtained from Airport Company (ADO).  
- The acft heading will be at the discretion of ATC, based on the prevailing wind conditions and to avoid interference with acft operations.  
- Acft had to be towed from/to that location under the escort of a FOLLOW ME car.





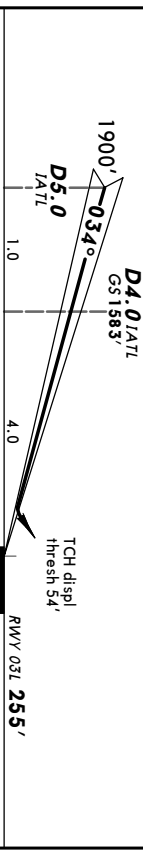
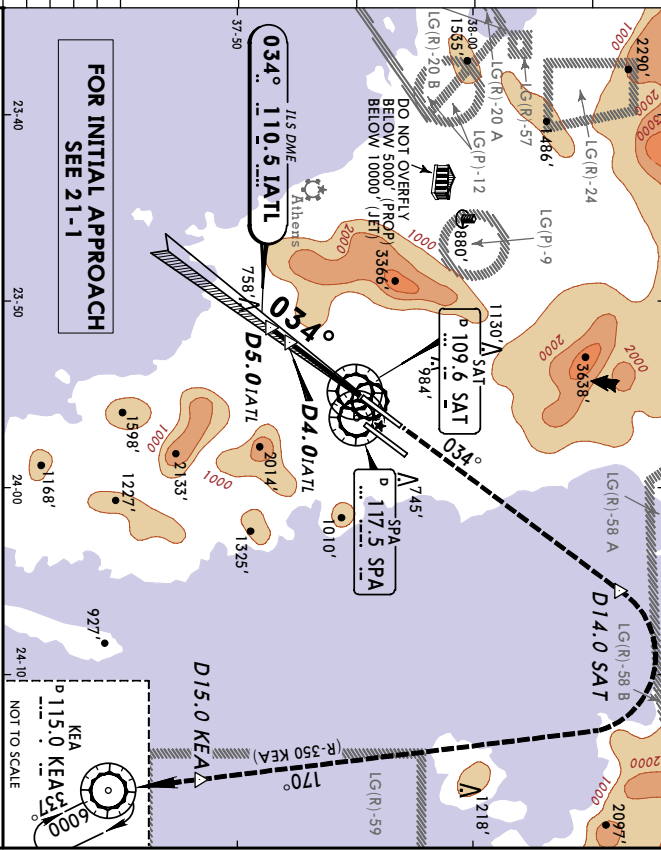
**LGAV/ATH**  
**ELEFTHERIOS VENIZELOS INTL** 8 JUL 05 **(21-1A)** **ATHENS, GREECE**  
**ILS Rwy 03L**

ATIS	ATHENS Arrival (APP)	Director (R)	Approach
136.12	West 132.97 East 126.57	121.4	126.57 118.47 118.0 130.02
ELEFTHERIOS VENIZELOS tower		Ground	East 121.9 South 121.95
LOC	Final	GS	ILS
110.5	Apch Crs	1583' (1328')	DA(H) 455' (200')
			Appt Elev 308'
			RWY 255'

**MISSED APCH:** Climb STRAIGHT AHEAD to intercept R-034 SAT. At D14.0 SAT turn RIGHT (MAX IAS 220 KT). Intercept R-350 KEA and proceed to KEA VOR climbing to 6000' and hold. Cross D15.0 KEA at 6000'.

**Air Set:** MB Rwy Elev: 9 MB Trans level: By ATC Trans alt: 9000'  
 ILS DME reads zero at rwy 03L displaced threshold.

MS-A SPA VOR



GRD speed-Kts	70	90	100	120	140	160	HAAS-II	SAT
GS	3,000'	377	485	539	647	755	862	D14.0

<b>JAR OPS</b>		STRAIGHT-IN LANDING RWY 03L		CIRCLE-TO-LAND	
ILS		LOC (GS out)		SAT	
DA(H) 455' (200')		ALS out		109.6 D14.0	
FULL				R-034	

<b>PANS OPS 3</b>		NOT APPLICABLE		NOT APPLICABLE	
A	RVR 550m				
B	RVR 1000m				
C					
D					

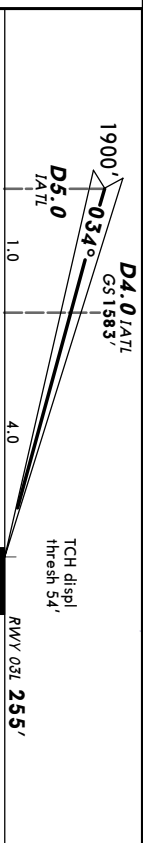
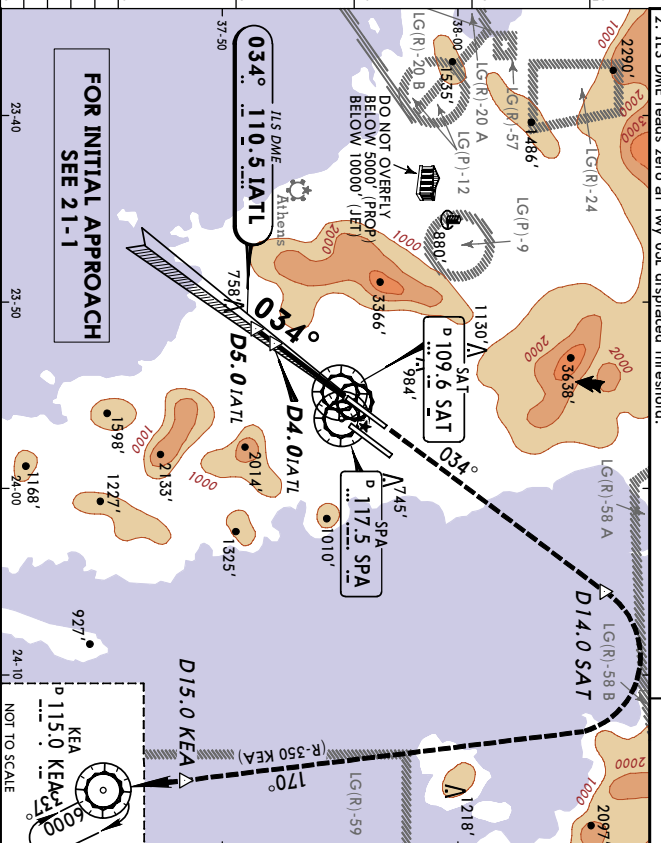
**LGAV/ATH**  
**ELEFTHERIOS VENIZELOS INTL** 8 JUL 05 **(21-1B)** **ATHENS, GREECE**  
**CAT II ILS Rwy 03L**

ATIS	ATHENS Arrival (APP)	Director (R)	Approach
136.12	West 132.97 East 126.57	121.4	126.57 118.47 118.0 130.02
ELEFTHERIOS VENIZELOS tower		Ground	East 121.9 South 121.95
LOC	Final	GS	ILS
110.5	Apch Crs	1583' (1328')	DA(H) RA 97' (355' (100'))
			Appt Elev 308'
			RWY 255'

**MISSED APCH:** Climb STRAIGHT AHEAD to intercept R-034 SAT. At D14.0 SAT turn RIGHT (MAX IAS 220 KT). Intercept R-350 KEA and proceed to KEA VOR climbing to 6000' and hold. Cross D15.0 KEA at 6000'.

**Air Set:** MB Rwy Elev: 9 MB Trans level: By ATC Trans alt: 9000'  
 1. Special Aircrew & Aircraft Certification Required.  
 2. ILS DME reads zero at rwy 03L displaced threshold.

MS-A SPA VOR



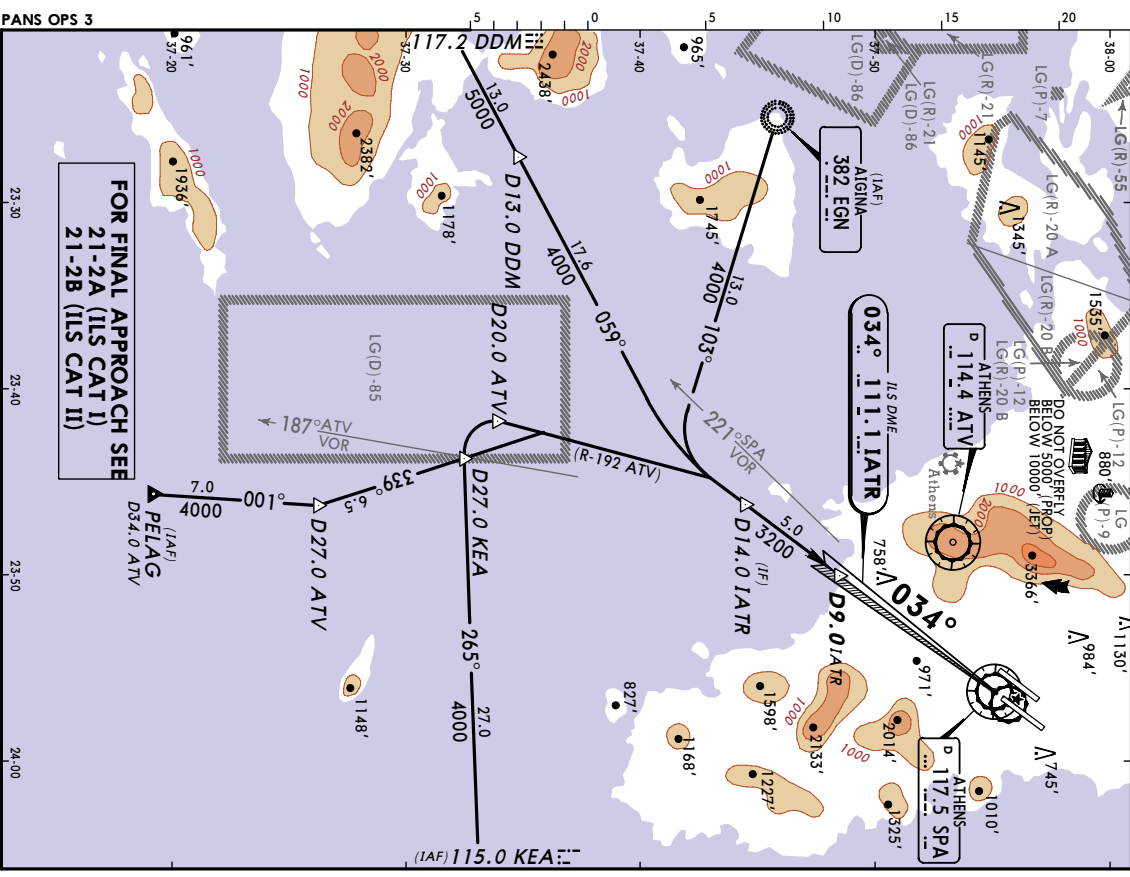
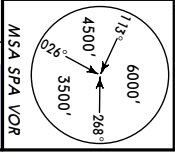
GRD speed-Kts	70	90	100	120	140	160	HAAS-II	SAT
GS	3,000'	377	485	539	647	755	862	D14.0

<b>JAR OPS</b>		STRAIGHT-IN LANDING RWY 03L		CIRCLE-TO-LAND	
CAT II ILS		LOC (GS out)		SAT	
DA(H) RA 97' (355' (100'))		ALS out		109.6 D14.0	
FULL				R-034	

<b>PANS OPS 3</b>		NOT APPLICABLE		NOT APPLICABLE	
A	RVR 300m				

**LGAV/ATH** **JEPPesen** **ATHENS, GREECE**  
**ELEFTHERIOS VENIZELOS INTL** 8 JUL 05 **(21-2)** **ILS Rwy 03R**

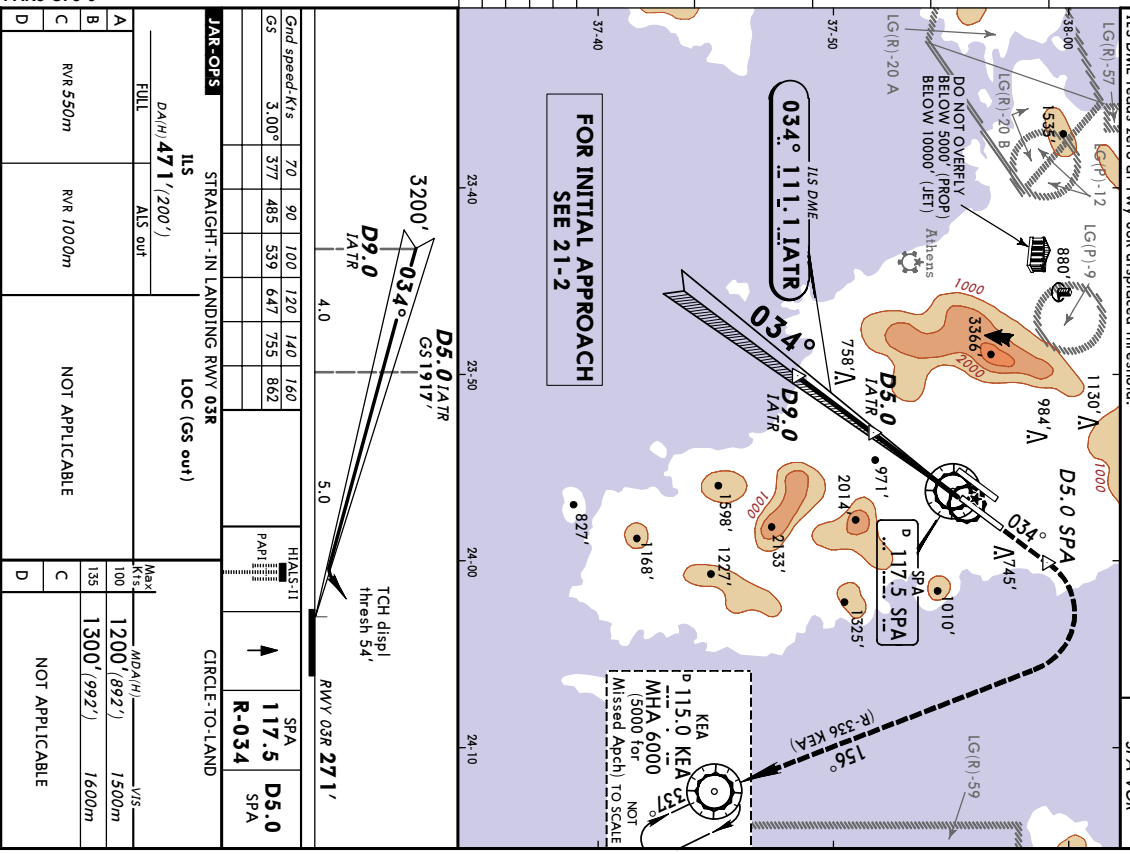
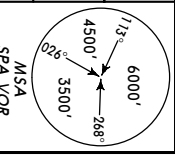
ATIS	ATHENS Arrival (APP)	Director (R)	Approach	
	136.12 West 132.97 East	126.57	121.4	126.57 118.47 118.0 130.02
ELEFTHERIOS VENIZELOS Tower		West 121.8	North 121.75	East 121.9
LOC	Final 111.1	GS	DA(H)/RA	Appt Elev
IATR	Apch Crs 034°	Refer to 21-2A (CAT I) 21-2B (CAT II)	Refer to 21-2A (CAT I) 21-2B (CAT II)	RWY 271'
Alt Set: MB	Rwy Elev: 10 MB	Trans level: By ATC		Trans alt: 9000'
ILS DME reads zero at rwy 03R displaced threshold.				



PANS OPS 3  
 CHANGES: Communications.  
 © JEPPESEN SANDERSON, INC., 2004, 2005. ALL RIGHTS RESERVED.

**LGAV/ATH** **JEPPesen** **ATHENS, GREECE**  
**ELEFTHERIOS VENIZELOS INTL** 8 JUL 05 **(21-2A)** **ILS Rwy 03R**

ATIS	ATHENS Arrival (APP)	Director (R)	Approach	
	136.12 West 132.97 East	126.57	121.4	126.57 118.47 118.0 130.02
ELEFTHERIOS VENIZELOS Tower		West 121.8	North 121.75	East 121.9
LOC	Final 111.1	GS	DA(H)	Appt Elev
IATR	Apch Crs 034°	D5.0 IATR 1917'(1646')	117.5 SPA 471'(200')	RWY 271'
Alt Set: MB	Rwy Elev: 10 MB	Trans level: By ATC		Trans alt: 9000'
ILS DME reads zero at rwy 03R displaced threshold.				



PANS OPS 3  
 CHANGES: Communications.  
 © JEPPESEN SANDERSON, INC., 2001, 2005. ALL RIGHTS RESERVED.

JAR OPS		STRAGHT-IN LANDING Rwy 03R		LOC (GS out)		CIRCLE-TO-LAND	
GS	3,000'	377	485	539	647	755	862
DA(H)	471'(200')	ALS out					
Max Kts	100	1200(992')	1500m	V/S			
APCH	100	1200(992')	1500m	V/S			
CRS	135	1300(992')	1600m	V/S			
SPD	135	1300(992')	1600m	V/S			
THR	135	1300(992')	1600m	V/S			
CL	135	1300(992')	1600m	V/S			
CR	135	1300(992')	1600m	V/S			
CD	135	1300(992')	1600m	V/S			

JAR OPS		STRAGHT-IN LANDING Rwy 03R		LOC (GS out)		CIRCLE-TO-LAND	
GS	3,000'	377	485	539	647	755	862
DA(H)	471'(200')	ALS out					
Max Kts	100	1200(992')	1500m	V/S			
APCH	100	1200(992')	1500m	V/S			
CRS	135	1300(992')	1600m	V/S			
THR	135	1300(992')	1600m	V/S			
CL	135	1300(992')	1600m	V/S			
CD	135	1300(992')	1600m	V/S			



**LGAV/ATH** **ATHENS, GREECE**  
**ELEFTHERIOS VENIZELOS INTL** **8 JUL 05** **(21-2B)** **CAT II ILS Rwy 03R**

**LGAV/ATH** **ATHENS, GREECE**  
**ELEFTHERIOS VENIZELOS INTL** **8 JUL 05** **(21-3)** **ILS Rwy 21L**

ATIS	ATHENS Arrival (APP)		Director (R)		Approach	
	West	East	West	North	East	South
136.12	132.97	126.57	121.4	126.57	118.47	130.02
ELEFTHERIOS VENIZELOS Tower						
118.62			West 121.8	East 121.9	South 121.95	

LOC	Final	GS	CAT II ILS	App Elev
111.1	034°	D5.0 IATR	RA 147'	308'
			DA(H) 421'(150')	Rwy 271'

**MISSED APCH:** Climb STRAIGHT AHEAD, Intercept and follow R-034 SPA. At D5.0 SPA turn RIGHT to Intercept R-336 inbound to KEA VOR climbing to 5000' and hold.

**Alt Set:** MB Rwy Elev: 10 MB Trans level: By ATC Trans alt: 9000'

1. Special Aircrew & Aircraft Certification Required.  
 2. ILS DME reads zero at rwy 03R displaced threshold.

ATIS	ATHENS Arrival (APP)		Director (R)		Approach	
	West	East	West	North	East	South
136.12	132.97	126.57	121.4	126.57	118.47	130.02
ELEFTHERIOS VENIZELOS Tower						
118.62			West 121.8	East 121.9	South 121.95	

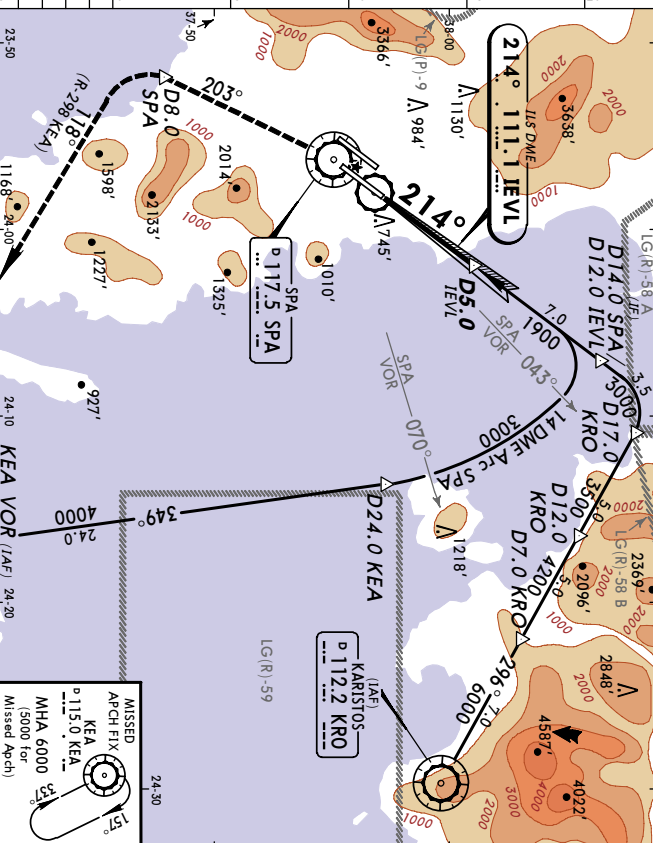
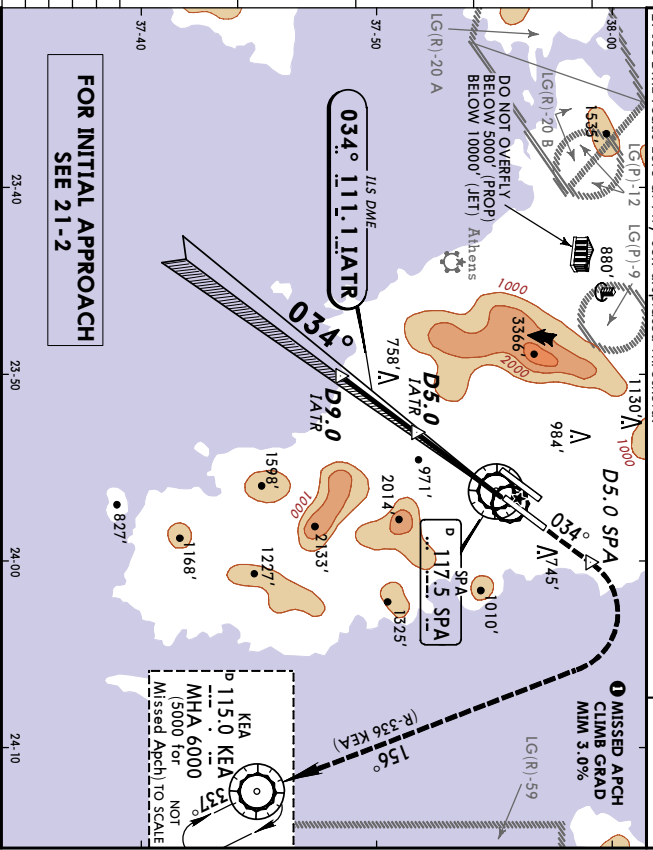
LOC	Final	GS	ILS	App Elev
111.1	214°	D3.0 ILEV	503'(200')	303'
			DA(H) 503'(200')	Rwy 303'

**MISSED APCH:** Climb STRAIGHT AHEAD. At SPA VOR turn LEFT and Intercept R-203 SPA. At D8.0 SPA turn LEFT to Intercept R-298 inbound to KEA VOR climbing to 5000' and hold.

**Alt Set:** MB Rwy Elev: 11 MB Trans level: By ATC Trans alt: 9000'

1. ILS DME reads zero at rwy 21L displaced threshold.



JAR OPS	STRAIGHT-IN LANDING Rwy 03R						CAT II ILS		RA 147'	
	70	90	100	120	140	160	SP A	SP A	SP A	SP A
GS	3.00°	377	485	539	647	755	862	117.5	D5.0	D5.0
HIALS-II										
PAP										
MISSED APCH CLIMB GRADIENT MIN 3.0%										
RA 147'										
DA(H) 421'(150')										
RVR 450m										

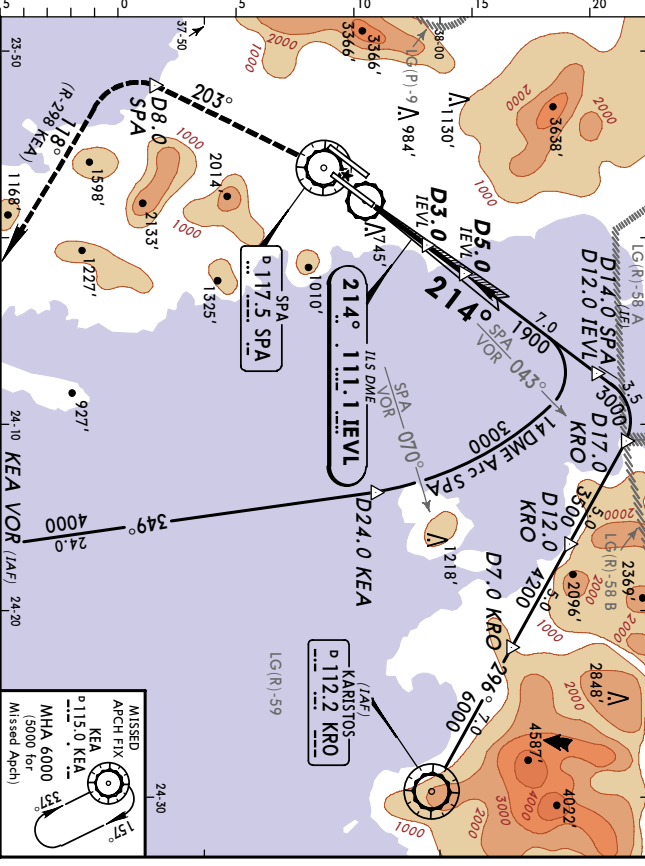
  

JAR OPS	STRAIGHT-IN LANDING Rwy 21L						LOC (GS out)		CIRCLE-TO-LAND	
	70	90	100	120	140	160	SP A	SP A	SP A	SP A
GS	3.00°	377	485	539	647	755	862	117.5	203°	D8.0
HIALS-II										
PAP										
MISSED APCH CLIMB GRADIENT MIN 3.0%										
RA 147'										
DA(H) 421'(150')										
RVR 550m										
RVR 1000m										
NOT APPLICABLE										
NOT APPLICABLE										

JAR OPS	STRAIGHT-IN LANDING Rwy 21L						LOC (GS out)		CIRCLE-TO-LAND	
	70	90	100	120	140	160	SP A	SP A	SP A	SP A
GS	3.00°	377	485	539	647	755	862	117.5	203°	D8.0
HIALS-II										
PAP										
MISSED APCH CLIMB GRADIENT MIN 3.0%										
RA 147'										
DA(H) 421'(150')										
RVR 550m										
RVR 1000m										
NOT APPLICABLE										
NOT APPLICABLE										

**LGAV/ATH**  
**ELEFTHERIOS VENIZELOS INTL** 8 JUL 05 **(21-3A)** **ATHENS, GREECE**  
**CAT II ILS RWY 21L**

ATIS	ATHENS Arrival (APP)	Director (R)	Approach
136.12	West 132.97 East 126.57	121.4	126.57 118.47 118.0 130.02
ELEFTHERIOS VENIZELOS Tower		West 121.8 North 121.75 East 121.9	Ground South 121.95
LOC	Final	CAT II ILS	Appt Elev 308'
111.1	Apch Crs 214°	RA 94' DA(H) 403' (100')	RWY 303'
MISSED APCH: Climb STRAIGHT AHEAD. At SPA VOR turn LEFT and intercept R-203 SPA. At D8.0 SPA then turn LEFT to intercept R-298 inbound to KEA VOR climbing to 5000' and hold.		Trans level: By ATC Trans alt: 9000'	
Alt Set: MB Rwy Elev: 11 MB ILS DME reads zero at rwy 21L displaced threshold.		MISA SPA VOR	



**PANS OPS 3**

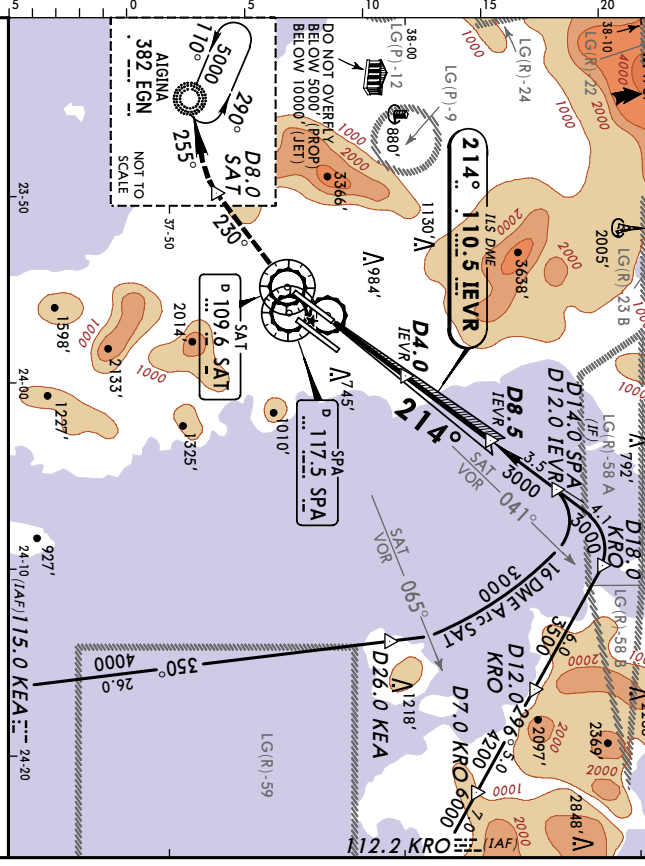
GRD speed-Kts	70	90	100	120	140	160	HAAS-II	SPA	203°	D8.0
GS	3,000'	377	485	539	647	755	862	117.5	203°	D8.0
RWY 21L 303'										
TCH displ thresh 54'										
RWY 300m										

STRAIGHT-IN LANDING RWY 21L  
 CAT II ILS  
 ABCD  
 RA 94'  
 DA(H) 403' (100')

CHANGES: Communications. © JEPPESEN SANDERSON, INC., 2001, 2005. ALL RIGHTS RESERVED.

**LGAV/ATH**  
**ELEFTHERIOS VENIZELOS INTL** 8 JUL 05 **(21-4)** **ATHENS, GREECE**  
**ILS RWY 21R**

ATIS	ATHENS Arrival (APP)	Director (R)	Approach
136.12	West 132.97 East 126.57	121.4	126.57 118.47 118.0 130.02
ELEFTHERIOS VENIZELOS Tower		West 121.8 North 121.75 East 121.9	Ground South 121.95
LOC	Final	ILS	Appt Elev 308'
110.5	Apch Crs 214°	DA(H) Refer to Minimums	RWY 282'
MISSED APCH: Climb STRAIGHT AHEAD to SAT VOR, then turn RIGHT to intercept R-230 SAT. At D8.0 SAT turn RIGHT on track 255° to EGN NDB climbing to 5000' and hold.		Trans level: By ATC Trans alt: 9000'	
Alt Set: MB Rwy Elev: 10 MB ILS DME reads zero at rwy 21R displaced threshold.		MISA SPA VOR	



**PANS OPS 3**

GRD speed-Kts	70	90	100	120	140	160	HAAS-II	SAT	109.6	230°	D8.0
GS	3,000'	377	485	539	647	755	862	109.6	230°	D8.0	
RWY 21R 282'											
TCH displ thresh 54'											
RWY 800m											
RWY 1200m											
RWY 800m											
RWY 1200m											
RWY 1200m											
RWY 1200m											

STRAIGHT-IN LANDING RWY 21R  
 ILS  
 Missed apch climb gradient 1:13  
 DA(H) min 4.0%  
 A: 935' (653') / C: 955' (673')  
 B: 945' (663') / D: 965' (683')

CIRCLE-TO-LAND  
 LOC (GS out)  
 SAT 109.6  
 RT 230°  
 D8.0 SAT

CHANGES: Communications. © JEPPESEN SANDERSON, INC., 2001, 2005. ALL RIGHTS RESERVED.

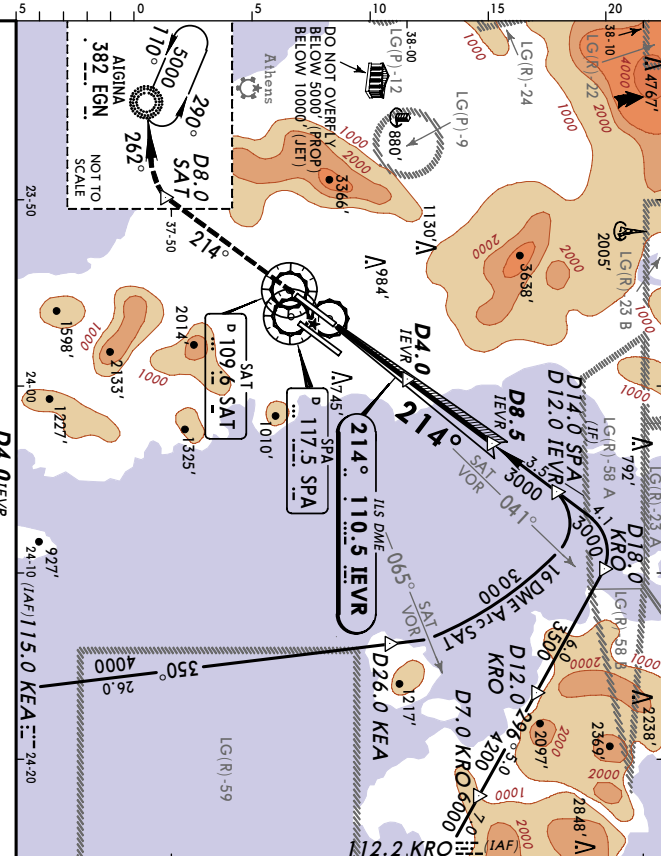
**LGAV/ATH** **ATHENS, GREECE**  
**ELEFTHERIOS VENIZELOS INTL** 8 JUL 05 **(21-4A)** **CAT II ILS Rwy 21R**

ATIS	ATHENS Arrival (APP)	Director (R)	Approach
136.12	West 132.97 East 126.57	121.4	126.57 118.47 118.0 130.02
ELEFTHERIOS VENIZELOS Tower			
136.27	West 121.8	North 121.75	East 121.9
LOC	Final	GS	CAT II ILS
110.5	Apch Crs	D4.0 ILEVR	RA/D(A)(H)
		1610' (1328')	Refer to Minimums
			Rwy Elev 308'
			Rwy 282'

**MISSED APCH:** Climb STRAIGHT AHEAD. After passing D8.0 SAT turn RIGHT on track 262° to EGN NDB climbing to 5000' and hold.

Alt Set: MB Rwy Elev: 10 MB Trans level: By ATC Trans alt: 9000'

1. Special Aircrew & Aircraft Certification Required.  
 2. ILS DME reads zero at rwy 21R displaced threshold.



Grnd speed-Kts	70	90	100	120	140	160	
GS	3.00°	377	485	539	647	755	862

**JAR OPS**

Missed apch climb grad mim 3.0% **I**

ABCD  
**RA 94'**  
 DA(H) 382' (100')

Missed apch climb grad mim 2.3%  
 CAT II ILS

A B C D  
**RA 120'** **RA 136'** **RA 149'** **RA 163'**  
 DA(H) 409' (127') DA(H) 425' (143') DA(H) 438' (156') DA(H) 452' (170')

RVR 300m **B** RVR 400m RVR 450m

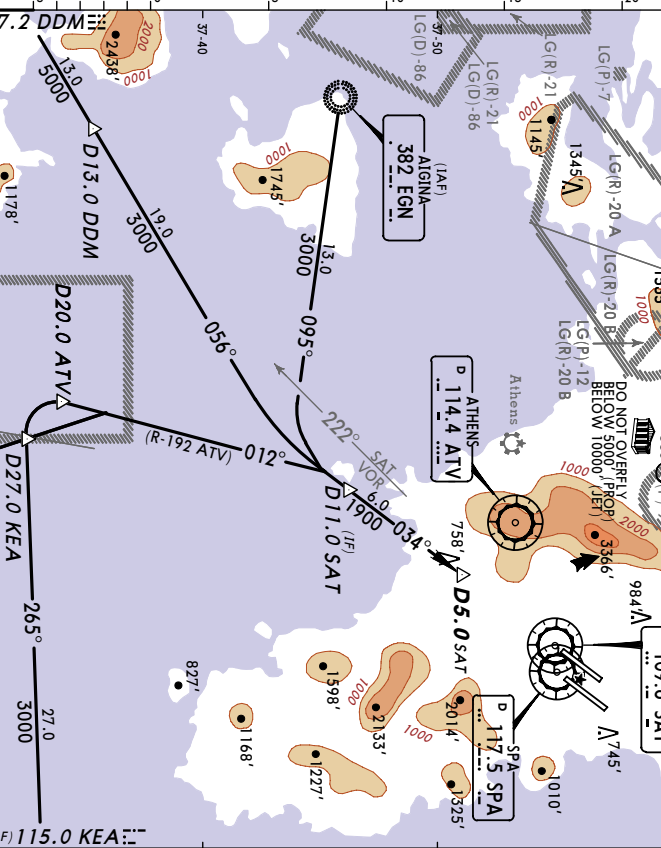
**PANS OPS 3**

**I** Climb gradient up to 1200'.  
**B** Operators applying U.S. Ops Specs: Autoland or HGS required below RVR 350m.  
 CHANGES: Communications.

**LGAV/ATH** **ATHENS, GREECE**  
**ELEFTHERIOS VENIZELOS INTL** 8 JUL 05 **(23-1)** **VOR DME Rwy 03L**

ATIS	ATHENS Arrival (APP)	Director (R)	Approach
136.12	West 132.97 East 126.57	121.4	126.57 118.47 118.0 130.02
ELEFTHERIOS VENIZELOS Tower			
136.27	West 121.8	North 121.75	East 121.9
VOR	Final	Minimum Alt	MDA(H)
109.6	SAT	Refer to chart	Refer to chart
	Apch Crs	23-1A	23-1A
			Rwy 255'

Alt Set: MB Rwy Elev: 9 MB Trans level: By ATC Trans alt: 9000'



Grnd speed-Kts	70	90	100	120	140	160	
GS	3.00°	377	485	539	647	755	862

**JAR OPS**

Missed apch climb grad mim 3.0% **I**

ABCD  
**RA 94'**  
 DA(H) 382' (100')

Missed apch climb grad mim 2.3%  
 CAT II ILS

A B C D  
**RA 120'** **RA 136'** **RA 149'** **RA 163'**  
 DA(H) 409' (127') DA(H) 425' (143') DA(H) 438' (156') DA(H) 452' (170')

RVR 300m **B** RVR 400m RVR 450m

**PANS OPS 3**

**I** Climb gradient up to 1200'.  
**B** Operators applying U.S. Ops Specs: Autoland or HGS required below RVR 350m.  
 CHANGES: Communications.

**FOR FINAL APPROACH**  
**SEE 23-1A**

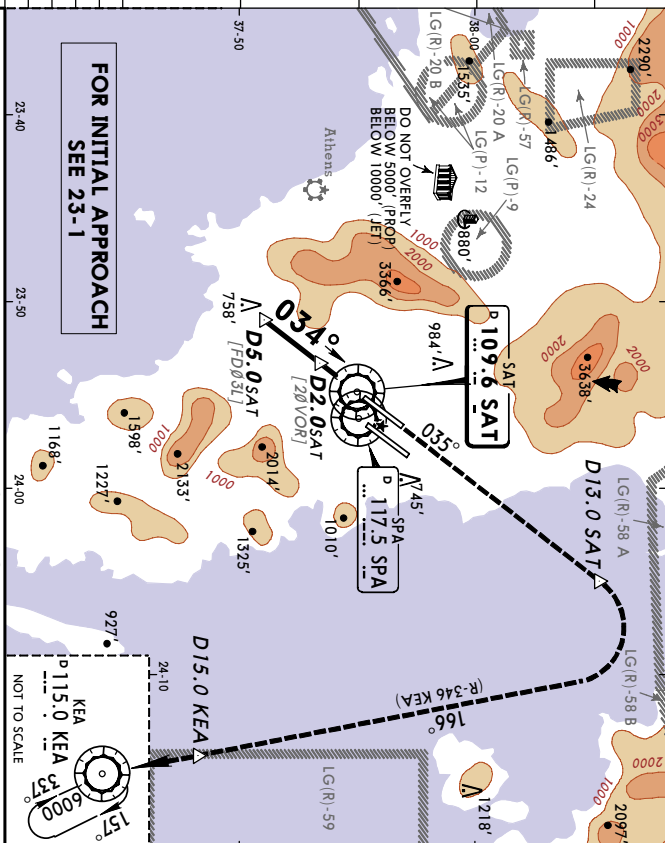
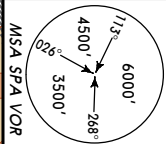


**LGAV/ATH** **ATHENS, GREECE**  
**ELEFTHERIOS VENIZELOS INTL** 8 JUL 05 **(23-1A)** **VOR DME Rwy 03L**

**JEPPesen**  
 Director (R)

ATIS	ATHENS Arrival (APP)		Director (R)		Approach	
	West	East	West	East	Ground	East
136.12	132.97	126.57	121.4	126.57	118.47	130.02
ELEFTHERIOS VENIZELOS Tower						
136.27		121.8		121.75		121.9

VOR	SAT	Final Appch Crs	Minimum Alt D5.0 SAT (1645')	MDA(H) 800' (545')	Appt Elev 308'	RWY 255'	MISA SPA VOR	
							Trans alt: 9000'	Trans alt: 9000'
109.6		034°	1900' (1645')	800' (545')	308'	255'	4500'	3500'



Grnd speed Kts	70	90	100	120	140	160	HEADS-11
Descent angle [3.60°]	446	573	637	765	892	1019	on 109.6 SAT
MAP at SAT VOR							R-035 SAT

JAR OPS	STRAIGHT-IN LANDING RWY 03L		CIRCLE-TO-LAND	
	MDA(H) 800' (545')	ALS out	MDA(H) 1200' (892')	ALS out
A	RVR 1000m		RVR 1500m	
B	RVR 1200m		RVR 1600m	
C	RVR 1600m		NOT APPLICABLE	
D	RVR 2000m			

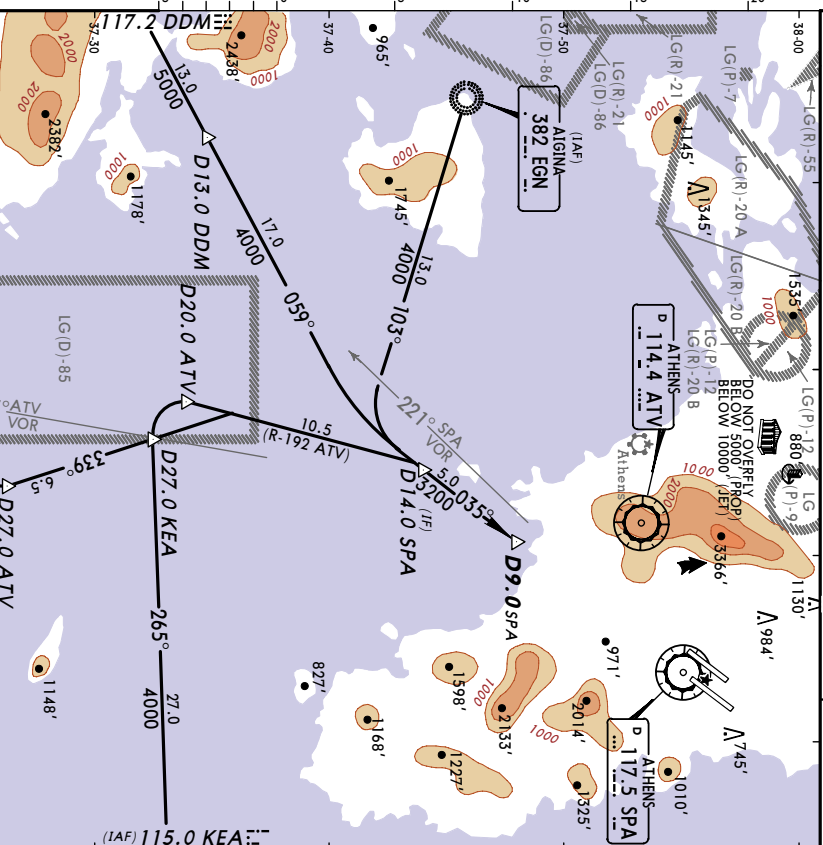
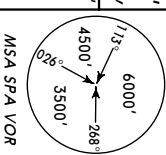
PANS OPS 3  
 CHANGES: Communications.  
 © JEPPesen SANDERSON, INC., 2004, 2005. ALL RIGHTS RESERVED.

**LGAV/ATH** **ATHENS, GREECE**  
**ELEFTHERIOS VENIZELOS INTL** 8 JUL 05 **(23-2)** **VOR DME Rwy 03R**

**JEPPesen**  
 Director (R)

ATIS	ATHENS Arrival (APP)		Director (R)		Approach	
	West	East	West	East	Ground	East
136.12	132.97	126.57	121.4	126.57	118.47	130.02
ELEFTHERIOS VENIZELOS Tower						
118.62		121.8		121.75		121.9

VOR	SPA	Final Appch Crs	Minimum Alt Refer to chart 23-2A	MDA(H) Refer to chart 23-2A	Appt Elev 308'	RWY 271'	MISA SPA VOR	
							Trans alt: 9000'	Trans alt: 9000'
117.5		035°	Refer to chart	Refer to chart	308'	271'	4500'	3500'



Grnd speed Kts	70	90	100	120	140	160	HEADS-11
Descent angle [3.60°]	446	573	637	765	892	1019	on 109.6 SAT
MAP at SAT VOR							R-035 SAT

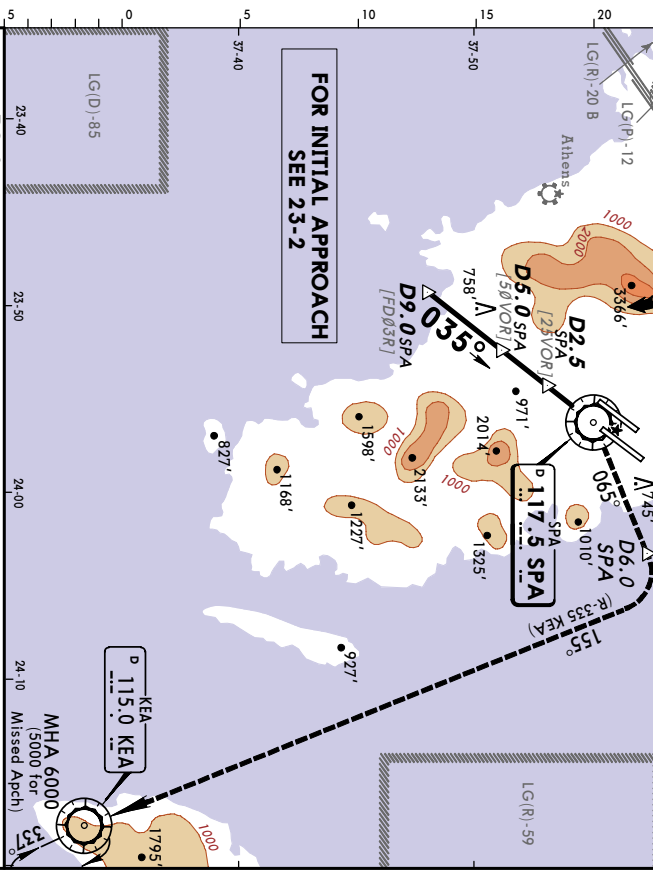
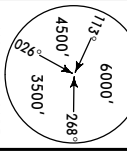
PANS OPS 3  
 CHANGES: Communications.  
 © JEPPesen SANDERSON, INC., 2004, 2005. ALL RIGHTS RESERVED.

**JEPPESEN** **ATHENS, GREECE**  
**VOR DME Rwy 03R**

LGAV/ATH  
 ELEFTHERIOS VENIZELOS INTL 8 JUL 05 **(23-2A)**

ATIS	ATHENS Arrival (APP)	Director (R)	Approach
136.12	West 132.97 East 126.57	121.4	126.57 118.47 118.0 130.02
ELEFTHERIOS VENIZELOS Tower		Ground	East 121.9 South 121.95
118.62		West 121.8 North 121.75	

VOR SPA	Final	Minimum Alt	MDA(H)	Appt Elev
117.5	035°	3200' (2929')	690' (419')	308'
MISSED APCH: Turn RIGHT as soon as practicable to intercept R-065 SPA. At D6.0 SPA turn RIGHT (MAX IAS 200 KT) to intercept R-335 KEA climbing to 5000'. Do not turn before passing MAP.		RWY 271'		
Alt Set: MB		RWy Elev: 10 MB		
Trans level: By ATC		Trans alt: 9000'		



**FOR INITIAL APPROACH  
 SEE 23-2**

Grnd speed-Kts	70	90	100	120	140	160	HIALS-II	SPA	D6.0 SPA
Descent angle [3.04°]	376	484	538	645	753	861	As soon as practicable	117.5	
MAP at SPA VOR							RT	R-065	

JAR-OPS		CIRCLE-TO-LAND	
STRAIGHT-IN LANDING RWY 03R		MISSED APCH	
MDA(H)	690' (419')	RT	

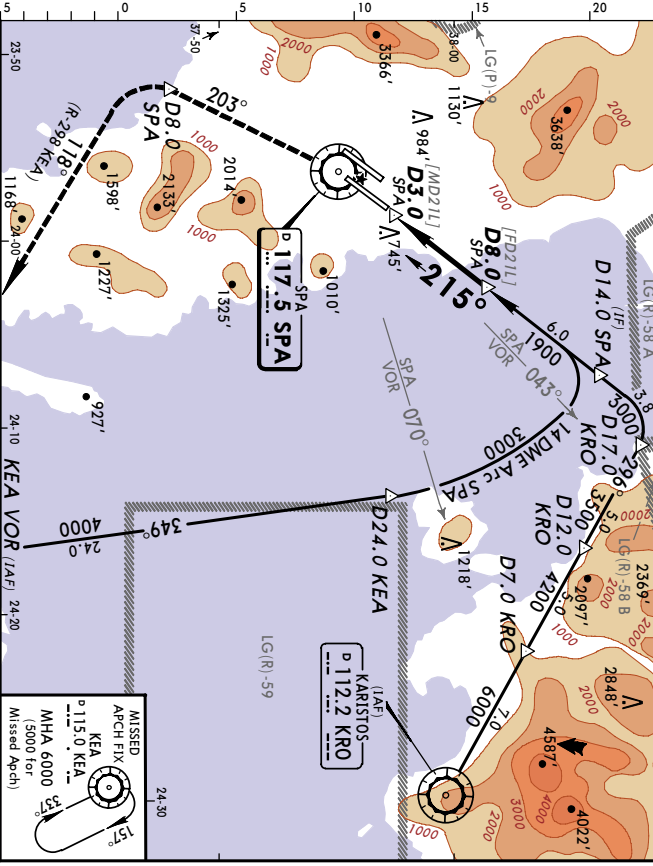
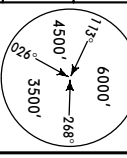
PANS OPS 3		AIS out	
A	RVR 900m	Max Kts	MDA(H)
B	RVR 1000m	100	1200 (892')
C	RVR 1800m	135	1300 (992')
D	RVR 2000m	NOT APPLICABLE	

**JEPPESEN** **ATHENS, GREECE**  
**VOR DME Rwy 21L**

LGAV/ATH  
 ELEFTHERIOS VENIZELOS INTL 8 JUL 05 **(23-3)**

ATIS	ATHENS Arrival (APP)	Director (R)	Approach
136.12	West 132.97 East 126.57	121.4	126.57 118.47 118.0 130.02
ELEFTHERIOS VENIZELOS Tower		Ground	East 121.9 South 121.95
118.62		West 121.8 North 121.75	

VOR SPA	Final	Minimum Alt	MDA(H)	Appt Elev
117.5	215°	1900' (1597')	1030' (727')	308'
MISSED APCH: Climb STRAIGHT AHEAD. At SPA VOR turn LEFT and intercept R-203 SPA. At D8.0 SPA turn LEFT to intercept R-298 KEA inbound to KEA VOR climbing to 5000' and hold.		RWY 303'		
Alt Set: MB		RWy Elev: 11 MB		
Trans level: By ATC		Trans alt: 9000'		



**FOR INITIAL APPROACH  
 SEE 23-2**

Grnd speed-Kts	70	90	100	120	140	160	HIALS-II	SPA	D8.0 SPA
Descent angle [3.00°]	372	478	531	637	743	849	As soon as practicable	117.5	203° SPA
MAP at D3.0 SPA							LT		

JAR-OPS		CIRCLE-TO-LAND	
STRAIGHT-IN LANDING RWY 21L		MISSED APCH	
MDA(H)	1030' (727')	RT	

PANS OPS 3		AIS out	
A	RVR 1200m	Max Kts	MDA(H)
B	RVR 1500m	100	1200 (892')
C	RVR 1800m	135	1300 (992')
D	RVR 2000m	NOT APPLICABLE	

