

*Add-on for Microsoft*



aerOSOFT™

**Flight Simulator**

**X**

*and FS2004!*

# Antalya

**CHARTS**





---

# **Antalya X**

# **Airport Charts**

**Die folgenden Karten sind ausschließlich für die Flugsimulation gedacht und weichen von den aktuellen Luftfahrtskarten ab!**

**Benutzen Sie diese Karten in keinem Fall für die Navigation in der realen Luftfahrt!**

**These charts are intended for flight simulation use only and will vary from current aeronautical charts!**

**Do not use for real navigation!**

**Der Abdruck der Karten erfolgt mit freundlicher Genehmigung der Lufthansa Systems FlightNav Inc.**

**The printed charts come with the kind permission of the Lufthansa Systems FlightNav Inc.**

© Copyright Lufthansa Systems FlightNav Inc.,  
alle Rechte vorbehalten, all rights reserved

---

13-MAY-2010

**AYT-LTAI**

1-10

**A01**

**A01**

**GENERAL**

**ATS Hours**

H24

**Airport Information**

**RFF:** CAT 9  
**PCN:** RWY 18C/36C: 110/R/A/W/T  
 RWY 18L/36R: 110/R/A/W/T  
 RWY 18R/36L: 80/F/B/X/T

**Operation**

**Transponder Mode S**

Select assigned transponder mode A and activate S, set to AUTO if technically AVBL;  
 – after LDG, continuously until fully parked on stand.  
 – Select ACFT identification feature if AVBL, before activating transponder.

**RWY Restriction**

RWY 18R/36L for TKOF/LDG/Taxi to be used in following cases only:  
 – EMERG  
 – CIV/MIL coordination, considering LCN and existence of JET barrier.

**Parking:** Parking PSNs 8-15 not visible from TWR. Adhere strictly to instructions.

**ARRIVAL**

**Speed**

MAX IAS 250KT within TMA at or below FL100 (refer to RFCs).

Based on AYT VOR/DME, GEY NDB:

MAX IAS 280KT at D60 AYT.  
 MAX IAS 240KT at D30 AYT.  
 MAX IAS 220KT at D15 AYT.

Based on LRA VOR/DME:

MAX IAS 280KT at D60 LRA.  
 MAX IAS 240KT at D30 LRA.  
 MAX IAS 220KT at D15 LRA.

**DEPARTURE**

**Take-off Minima**

RWY		18L/36R
A, B, C	ft - m/km	0 – 125R
D		0 – 150R
RWY		18R/36L, 18C/36C
All ACFT	ft - m/km	0 – 400V

**Speed**

MNM IAS 230KT below FL100.

**Communication**

After TKOF immediately contact APPROACH.

A01

Antalya intl. **Antalya** Turkey

13-MAY-2010

**A01**

1-20

**LTAI-AYT**

**DEPARTURE**

**Departure Procedure**

**Noise Abatement Procedure**

Use ICAO Standard NADP 1.

**ATC Slot, Clearance**

Request ATC CLR on Antalya DLV 10min before start-up.

For start-up PROC see CRAR.

**Nur für die Flugsimulation! Nicht für die reale Navigation verwenden!**  
**For flight simulation only! Do not use for real navigation!**

07-JAN-2010

AVT-LTAI

2-10

Turkey Antalya Intl.

AGC > AFC

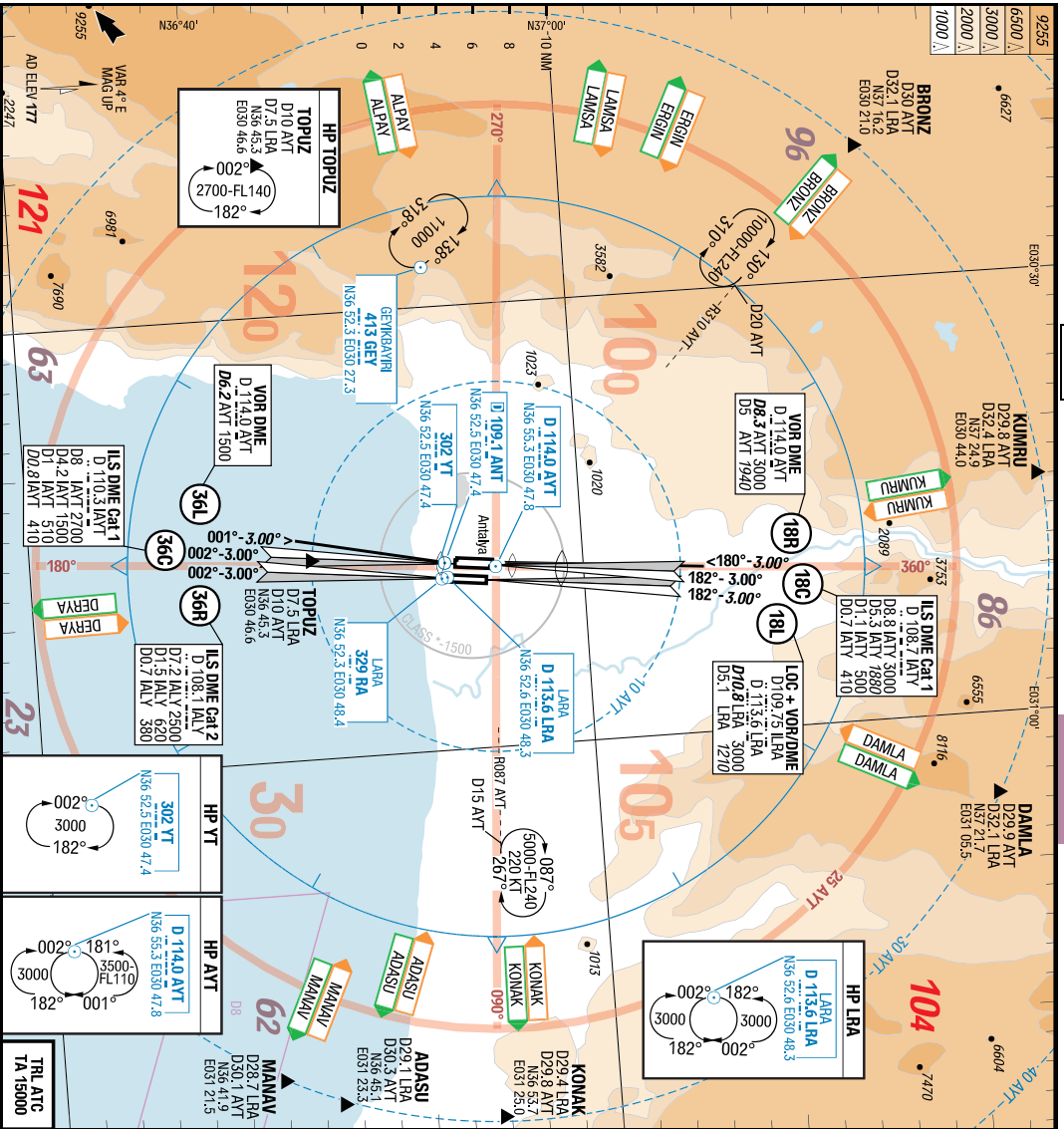
AFC

AFC

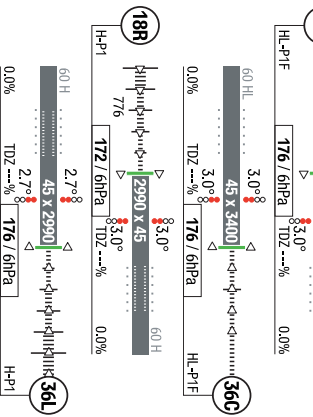
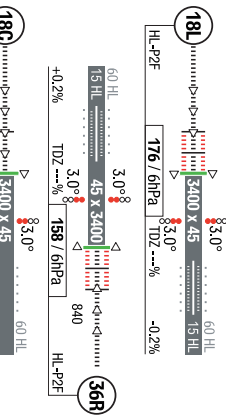
Antalya Intl. Antalya Turkey

AGC > AFC

AFC



ATIS	118.275	AMOS-3
APP	122.050	119.650
TWR	120.225	126.025
GND	123.675	128.025
DIV	126.100	125.000
	121.700	121.900
	123.175	



**Nur für die Flugsimulation! Nicht für die reale Navigation verwenden!**  
**For flight simulation only! Do not use for real navigation!**

07-JAN-2010

LTAI-AYT

E030° 47'

E030° 48'

E030° 49'

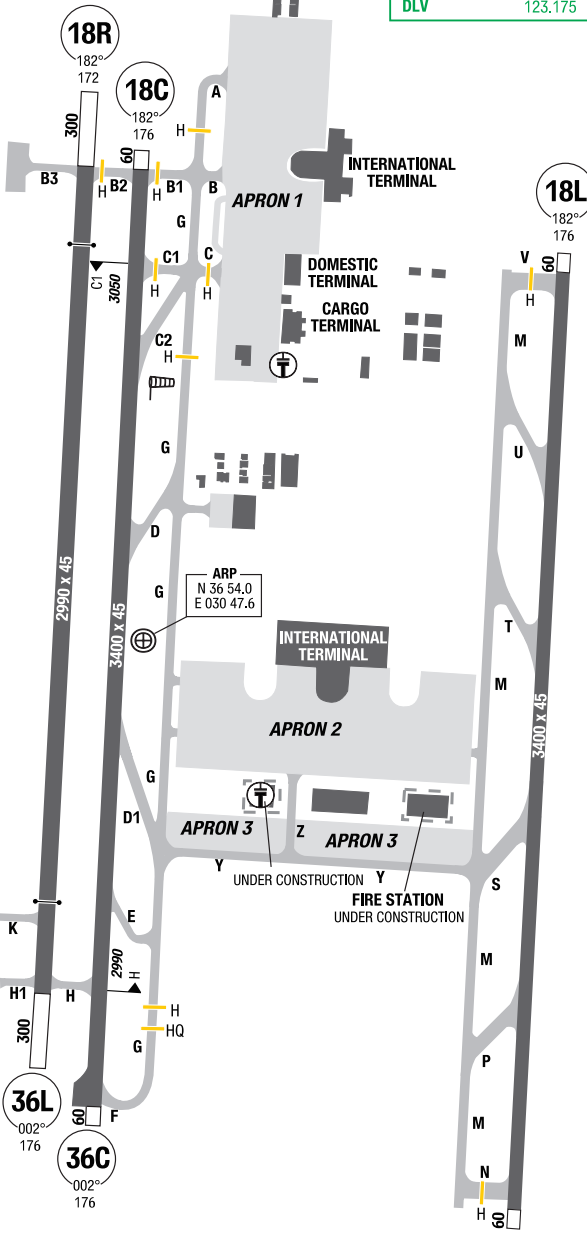
ATIS	118.275	AWOS-3
TWR	126.100	125.000
GND	121.700	121.900
DLV	123.175	

D 114.0 AYT

18R  
182°  
172

18C  
182°  
176

18L  
182°  
176



ARP  
N 36 54.0  
E 030 47.6

FIRE STATION  
UNDER CONSTRUCTION

3-20

AGC

Antalya intl. Antalya Turkey

Turkey Antalya Antalya intl.

AGC

AGC

N36° 55'

N36° 54'

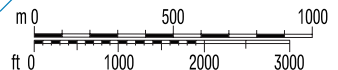
N36° 53'

VAR 4° E  
MAG UP

AD ELEV 177

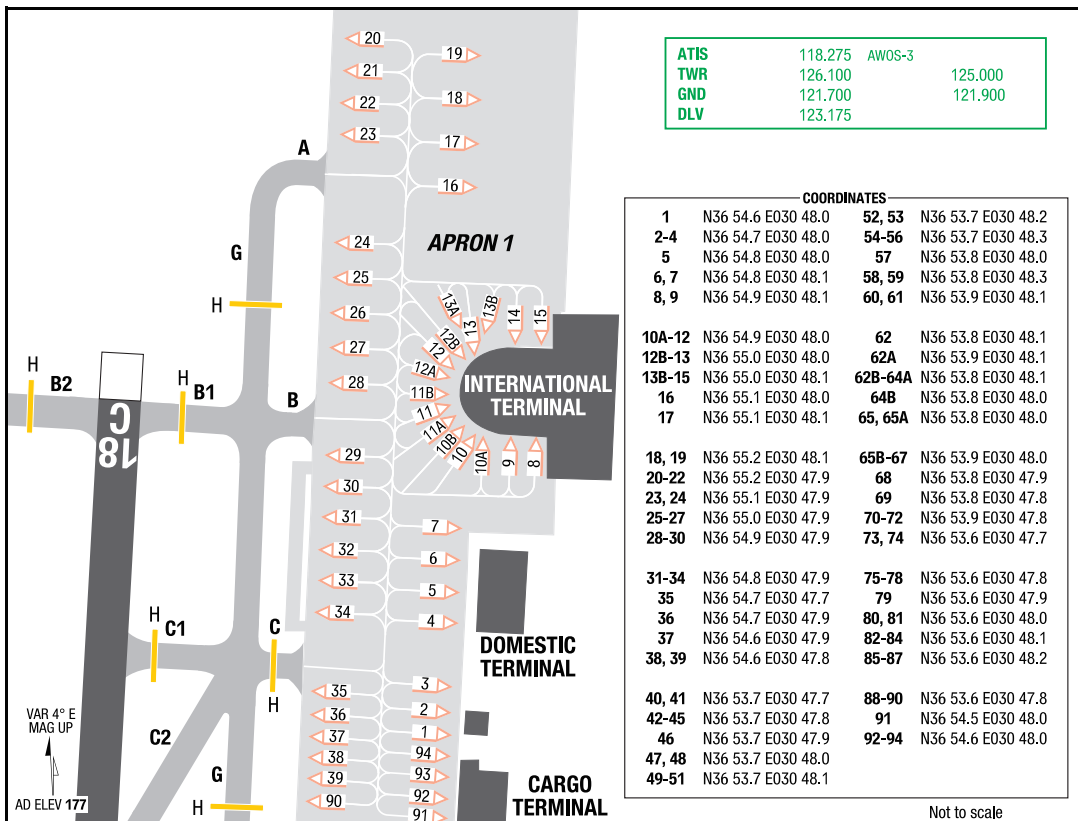
302 YT

LARA  
D 113.6 LRA



**Nur für die Flugsimulation! Nicht für die reale Navigation verwenden!**  
**For flight simulation only! Do not use for real navigation!**

20-AUG-2009  
 AYT-LTAI



3-30

Turkey Antalya Antalya intl.

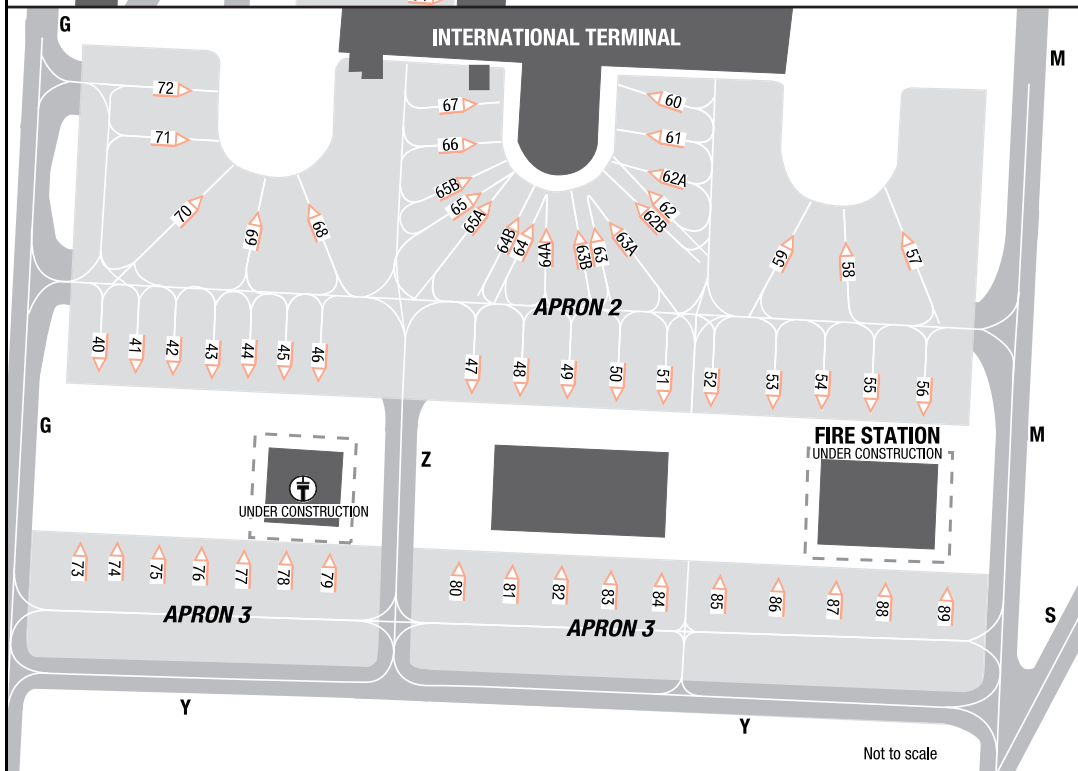
APC

APC

APC

APC

Antalya intl. Antalya Turkey



Nur für die Flugsimulation! Nicht für die reale Navigation verwenden!  
For flight simulation only! Do not use for real navigation!

# Turkey Antalya Antalya intl.

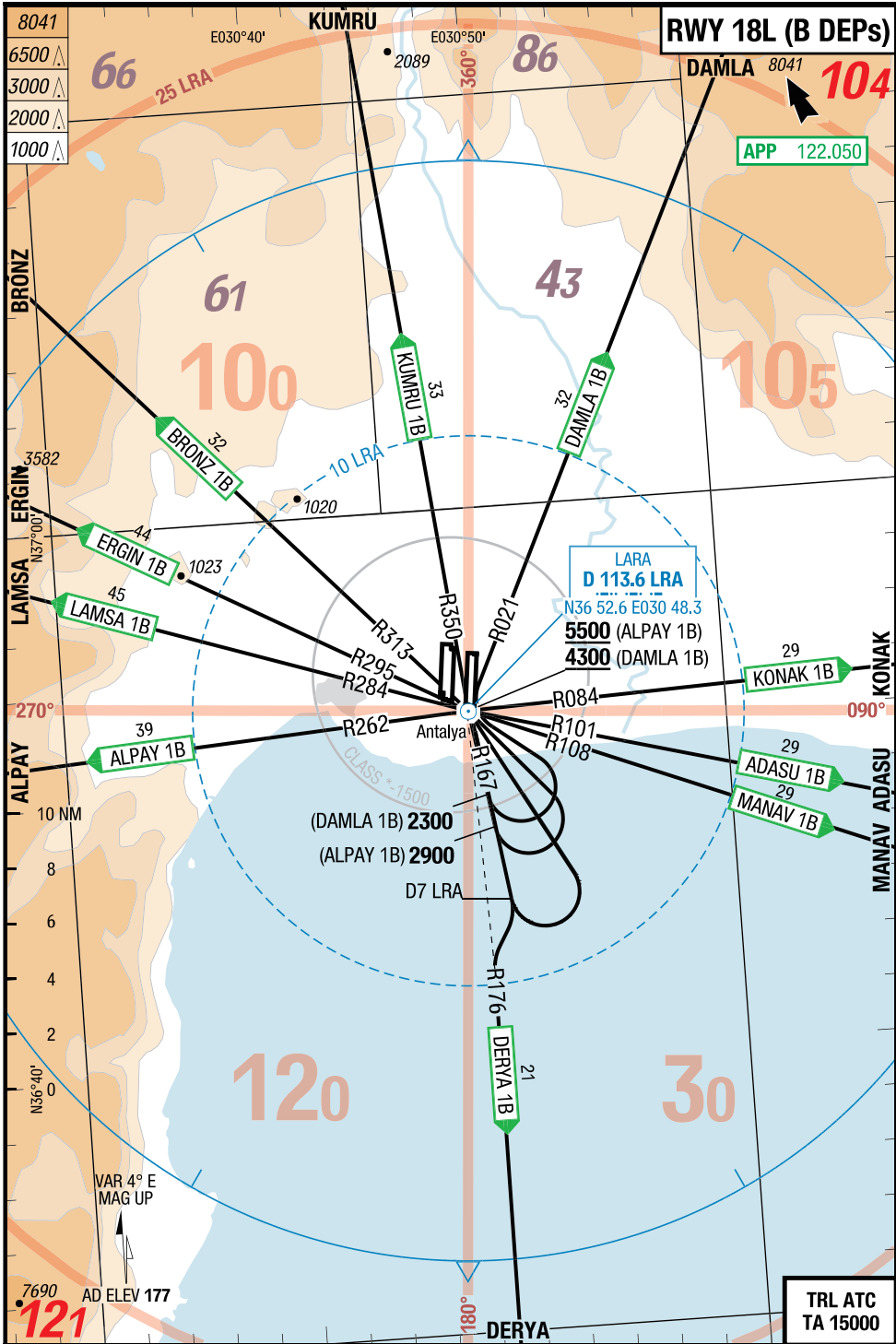
**SID**

15-OCT-2009

AYT-LTAI

4-10

SIDs RWY 18L (B DEPs)





Nur für die Flugsimulation! Nicht für die reale Navigation verwenden!  
For flight simulation only! Do not use for real navigation!

SID

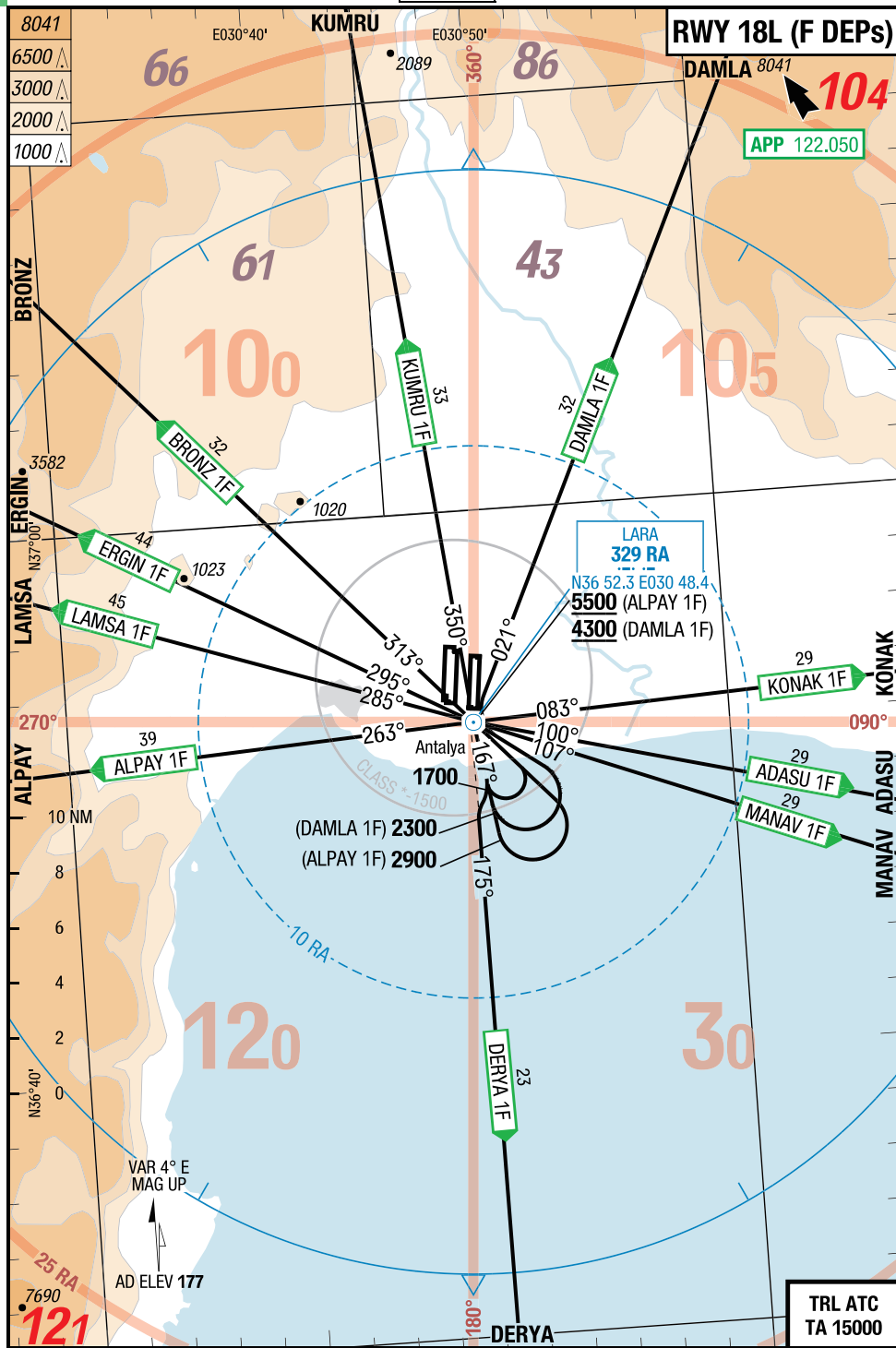
# Antalya intl. Antalya Turkey

15-OCT-2009

## SIDs RWY 18L (F DEPs)

4-20

## LTAI-AYT



Nur für die Flugsimulation! Nicht für die reale Navigation verwenden!  
For flight simulation only! Do not use for real navigation!

Turkey Antalya Antalya intl.

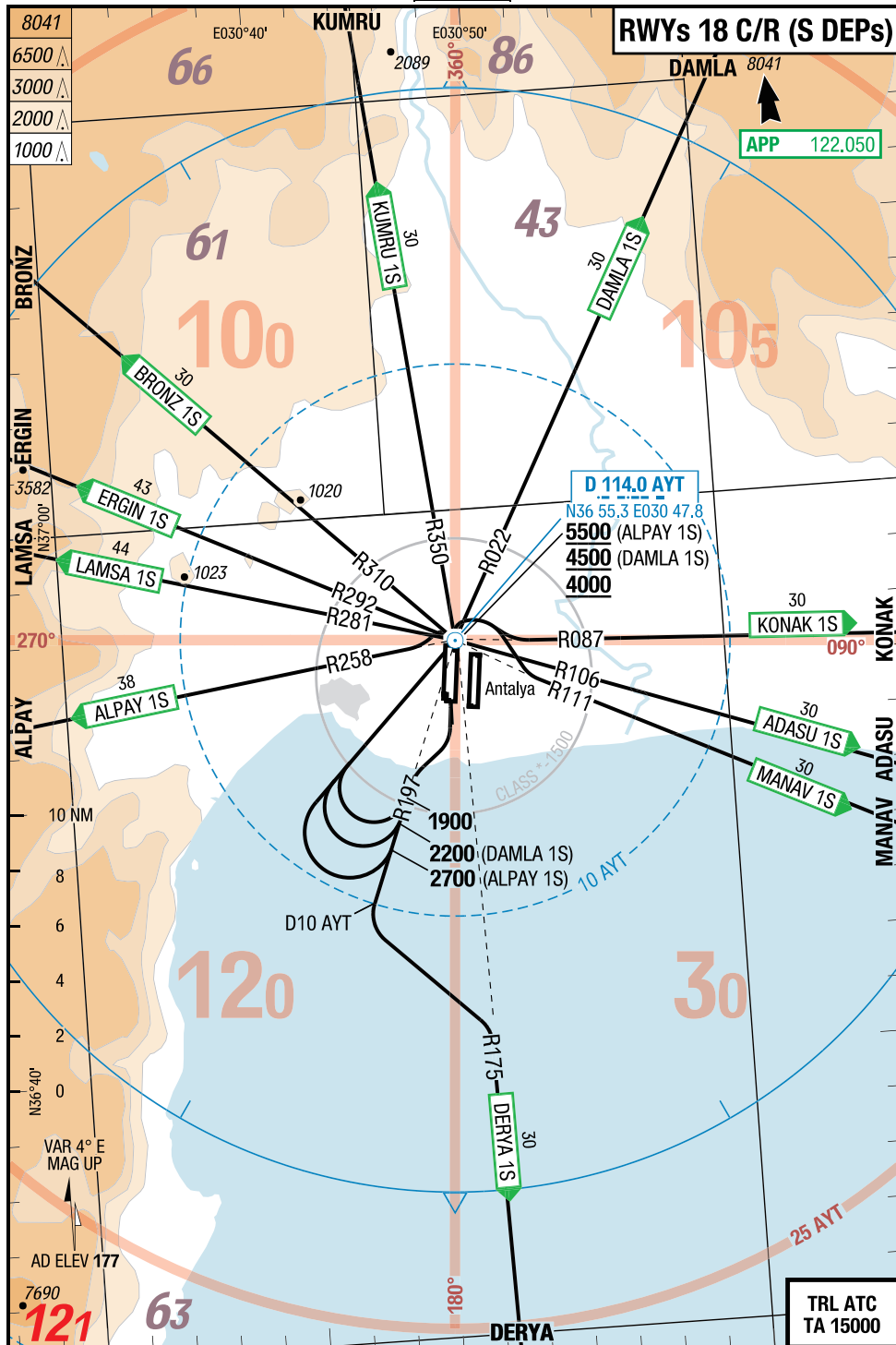
SID

15-OCT-2009

AYT-LTAI

4-30

SIDs RWYs 18C/R (S DEPs)



TRL ATC  
TA 15000

Nur für die Flugsimulation! Nicht für die reale Navigation verwenden!  
For flight simulation only! Do not use for real navigation!

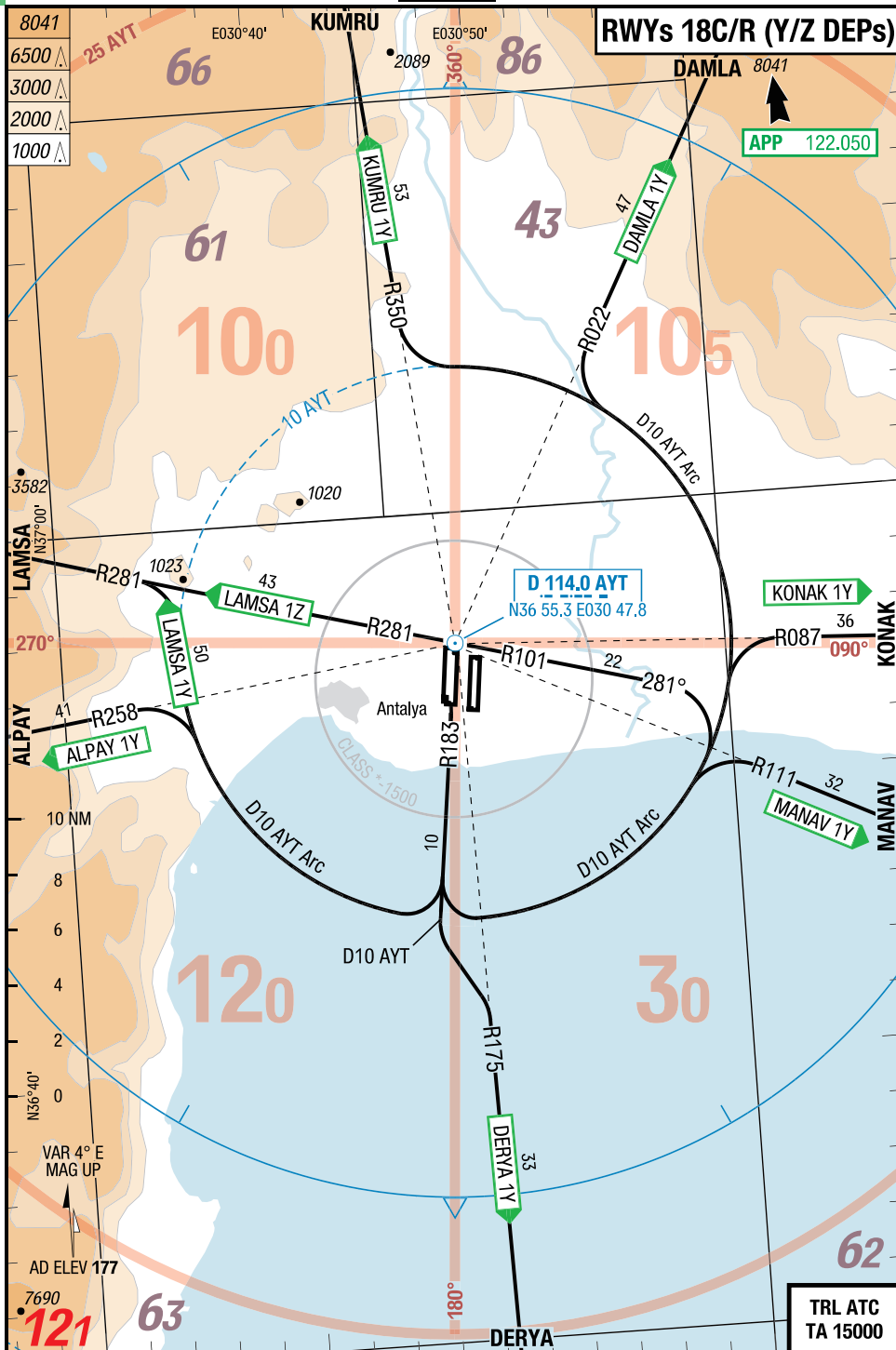
**SID**

Antalya intl. **Antalya** Turkey

15-OCT-2009

**SIDs RWYs 18C/R (Y/Z DEPs)** 4-40

**LTAI-AYT**



Nur für die Flugsimulation! Nicht für die reale Navigation verwenden!  
For flight simulation only! Do not use for real navigation!

Turkey **Antalya** Antalya intl.

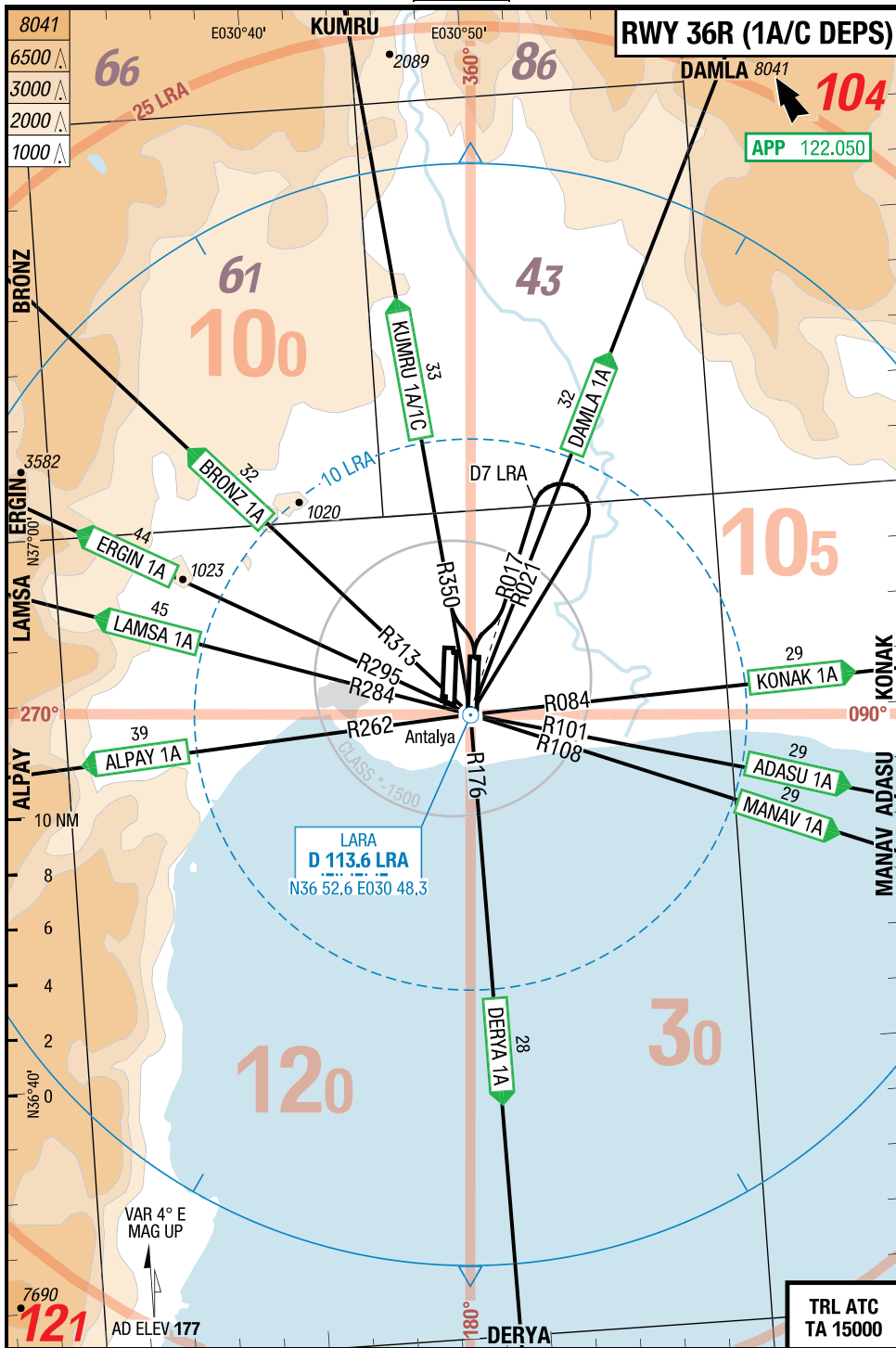
**SID**

15-OCT-2009

**AYT-LTAI**

**4-50**

**SIDs RWY 36R (1A/C DEPs)**



Nur für die Flugsimulation! Nicht für die reale Navigation verwenden!  
 For flight simulation only! Do not use for real navigation!

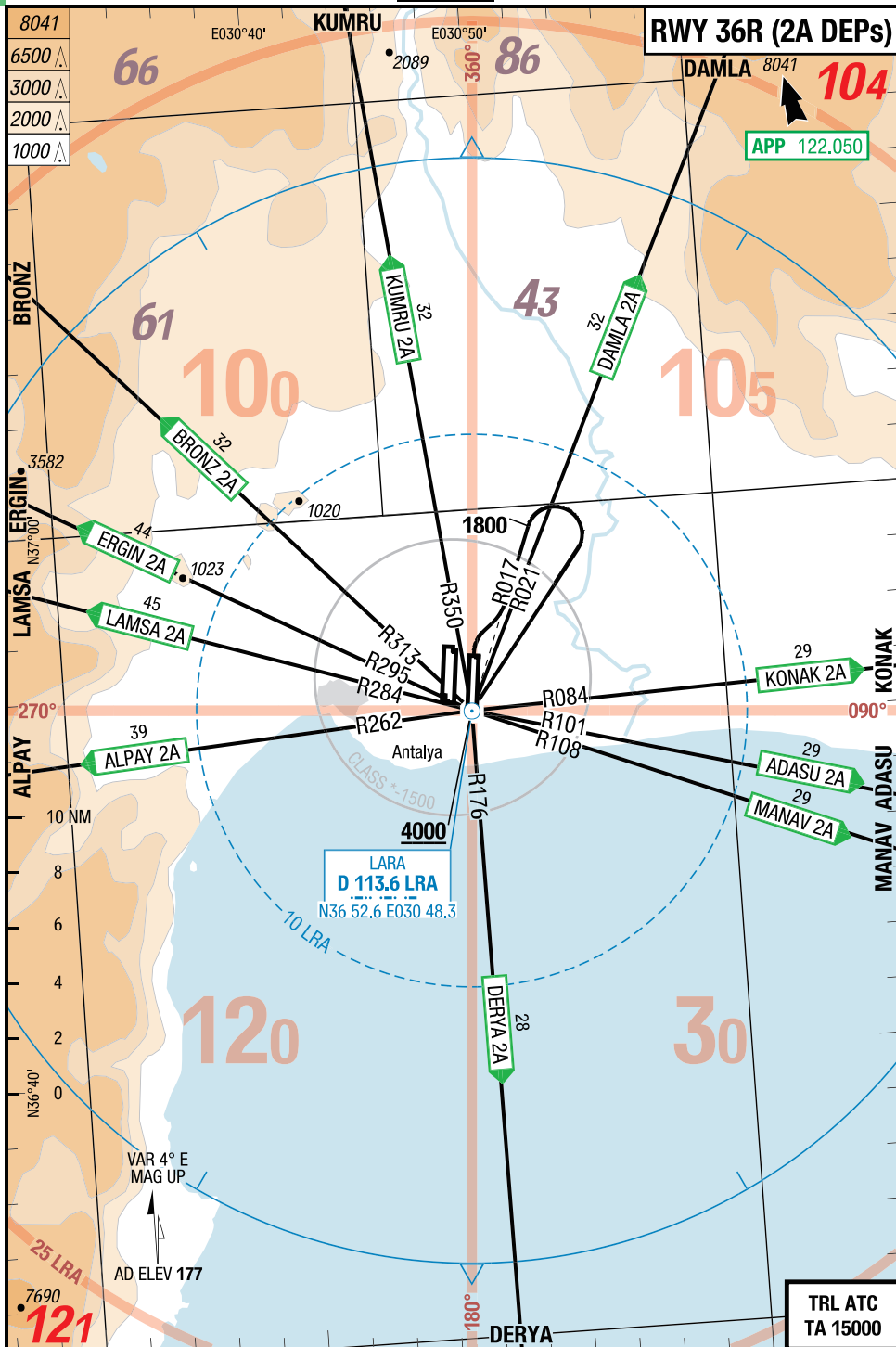
**SID**

Antalya intl. **Antalya** Turkey

15-OCT-2009

**SIDs RWY 36R (2A DEPs)** 4-60

**LTAI-AYT**



Nur für die Flugsimulation! Nicht für die reale Navigation verwenden!  
For flight simulation only! Do not use for real navigation!

Turkey **Antalya** Antalya intl.

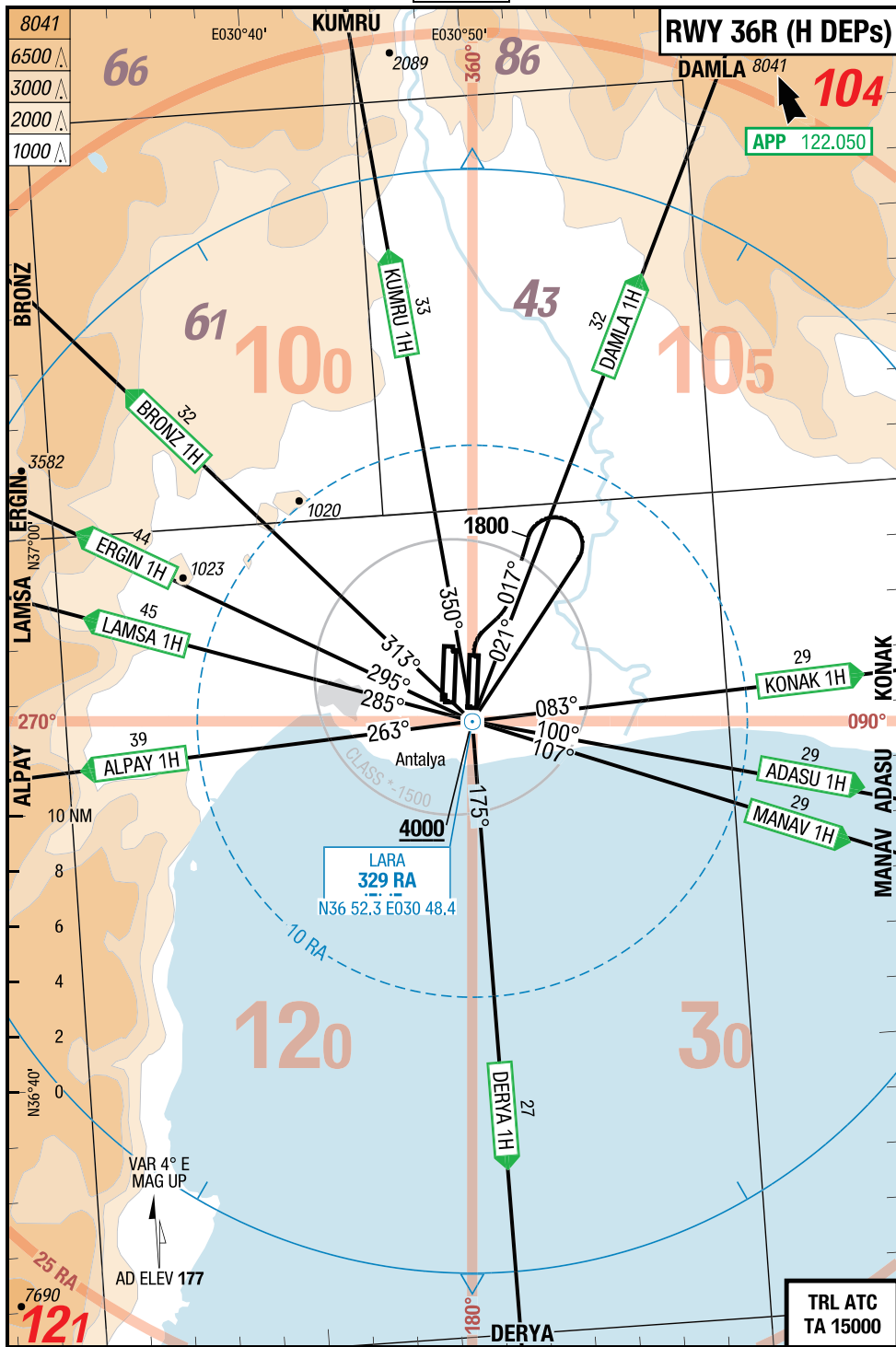
**SID**

15-OCT-2009

**AYT-LTAI**

**4-70**

**SIDs RWY 36R (H DEPs)**



Nur für die Flugsimulation! Nicht für die reale Navigation verwenden!  
 For flight simulation only! Do not use for real navigation!

**SID**

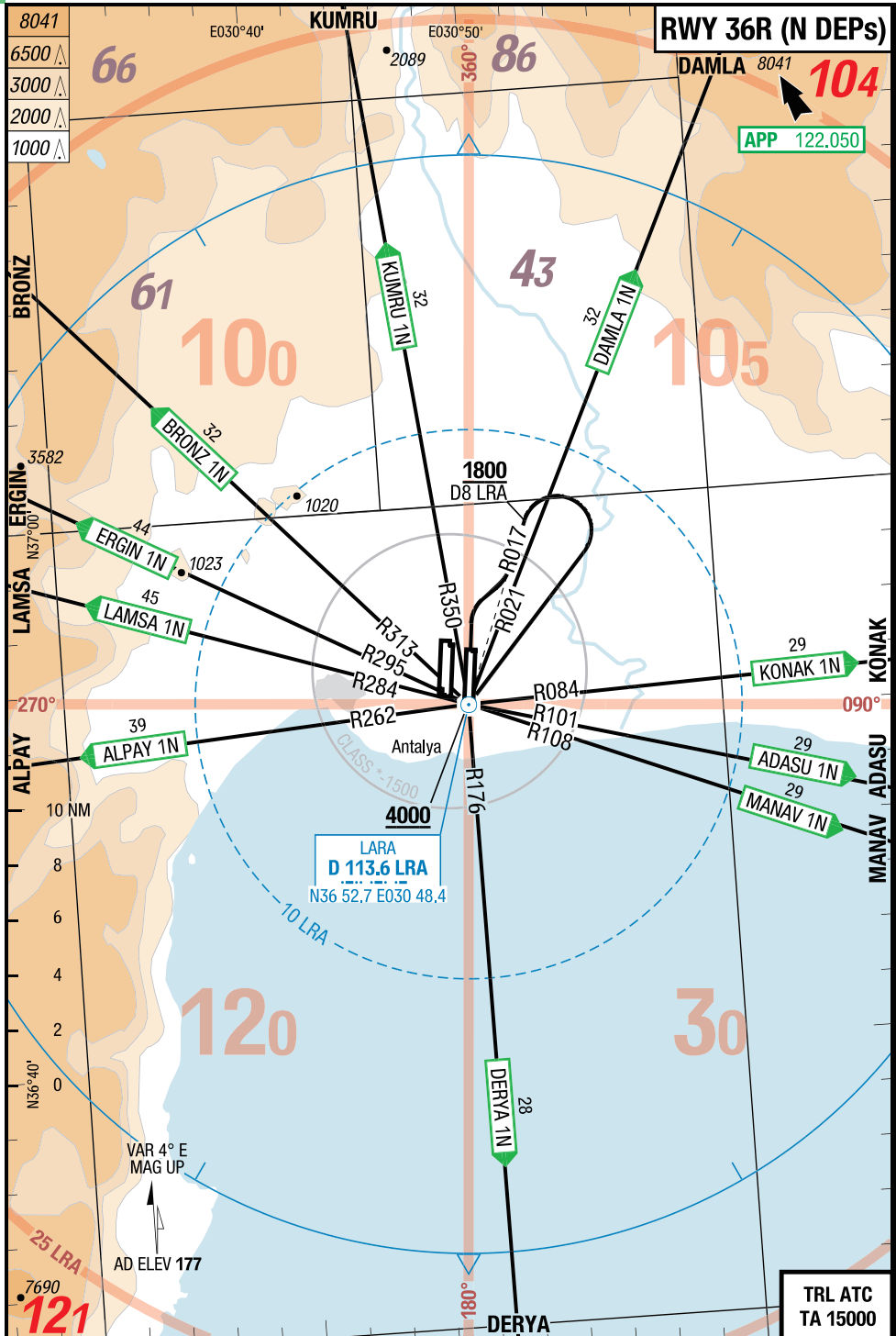
Antalya intl. **Antalya Turkey**

15-OCT-2009

**SIDs RWY 36R (N DEPs)**

4-80

**LTAI-AYT**



Nur für die Flugsimulation! Nicht für die reale Navigation verwenden!  
For flight simulation only! Do not use for real navigation!

Turkey Antalya Antalya intl.

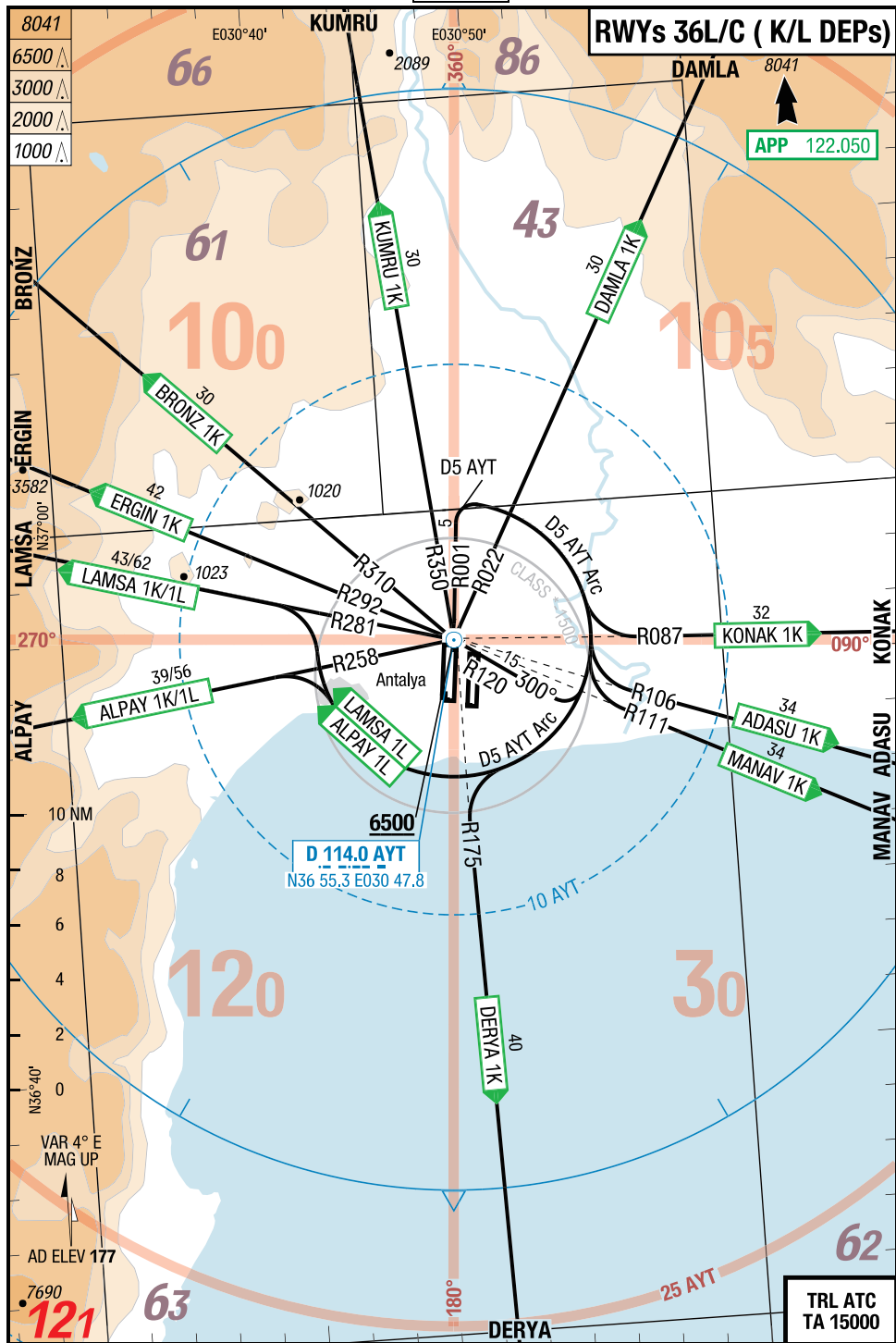
15-OCT-2009

AYT-LTAI

4-90

SIDs RWYs 36L/C (K/L DEPs)

SID





Nur für die Flugsimulation! Nicht für die reale Navigation verwenden!  
 For flight simulation only! Do not use for real navigation!

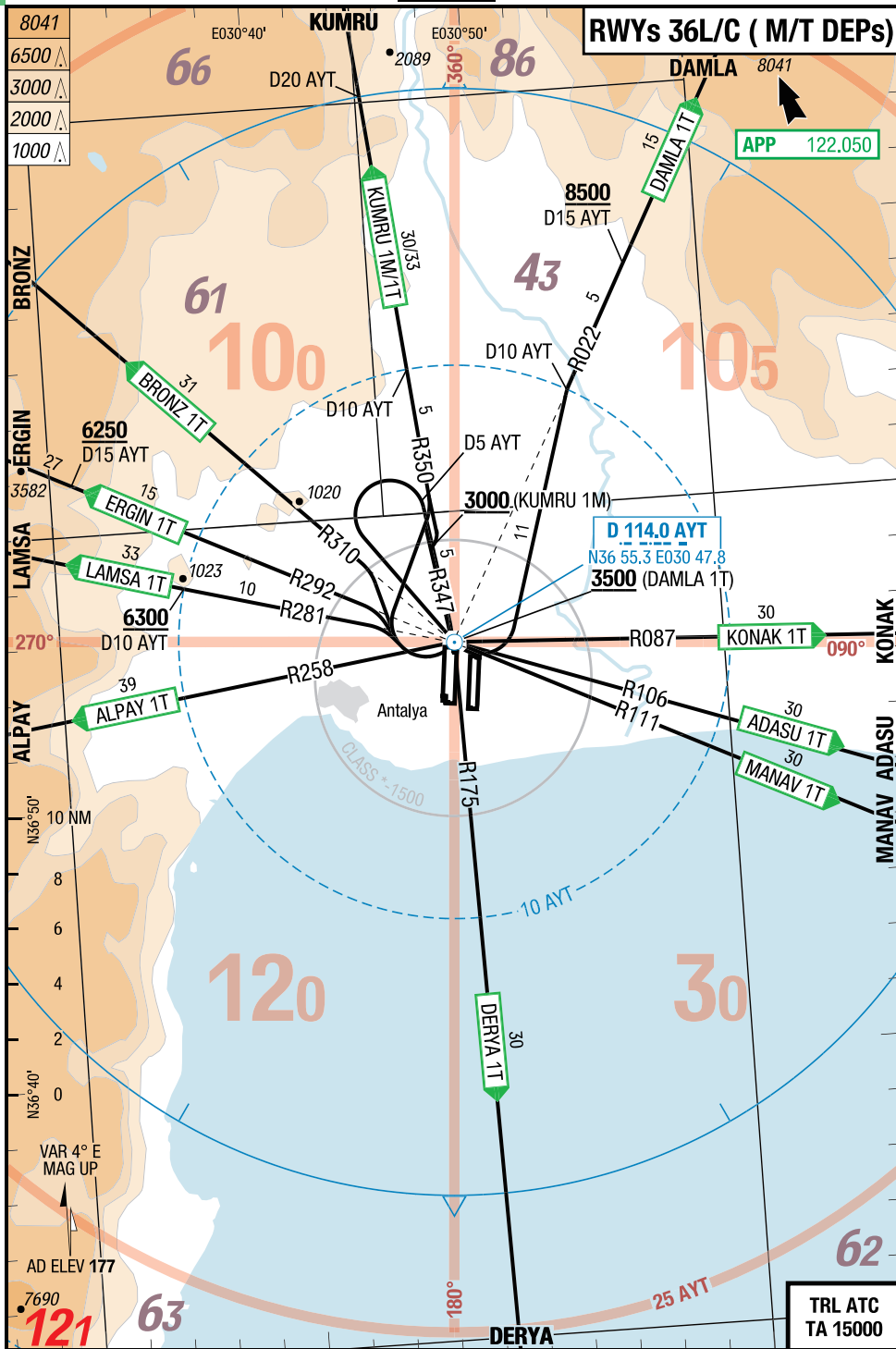
**SID**

Antalya intl. **Antalya** Turkey

15-OCT-2009

**SIDs RWYs 36L/C (M/T DEPs) 4-100**

**LTAI-AYT**



Nur für die Flugsimulation! Nicht für die reale Navigation verwenden!  
 For flight simulation only! Do not use for real navigation!

**Effective 09-APR-2009**  
 02-APR-2009

Turkey **Antalya** Antalya Intl.

**AYT-LTAI**

5-10

**SIDs RWY 18L (B DEPs)**

**SIDPT**

**SIDs RWY 18L (B DEPs) (182°)**

After take-off, contact Antalya APP.

SID	ROUTING	ALTITUDES
<b>Runway 18L</b>		
<b>ADASU 1B</b> 122.050	R167 <b>LRA</b> - at D7 <b>LRA LT</b> direct <b>LRA</b> - <b>RT</b> intercept R101 <b>LRA</b> to ADASU	
<b>ALPAY 1B</b> 122.050	R167 <b>LRA</b> - at <b>2900 LT</b> direct <b>LRA</b> - <b>LT</b> intercept R262 <b>LRA</b> to ALPAY	<b>LRA MNM 5500</b>
<b>BRONZ 1B</b> 122.050	R167 <b>LRA</b> - at D7 <b>LRA LT</b> direct <b>LRA</b> - R313 <b>LRA</b> to BRONZ	
<b>DAMLA 1B</b> 122.050	R167 <b>LRA</b> - at <b>2300 LT</b> direct <b>LRA</b> - <b>RT</b> intercept R021 <b>LRA</b> to DAMLA	<b>LRA MNM 4300</b>
<b>DERYA 1B</b> 122.050	R167 <b>LRA</b> - at D7 <b>LRA RT</b> intercept R176 <b>LRA</b> to DERYA	
<b>ERGIN 1B</b> 122.050	R167 <b>LRA</b> - at D7 <b>LRA LT</b> direct <b>LRA</b> - <b>LT</b> intercept R295 <b>LRA</b> to ERGIN	
<b>KONAK 1B</b> 122.050	R167 <b>LRA</b> - at D7 <b>LRA LT</b> direct <b>LRA</b> - <b>RT</b> intercept R084 <b>LRA</b> to KONAK	
<b>KUMRU 1B</b> 122.050	R167 <b>LRA</b> - at D7 <b>LRA LT</b> direct <b>LRA</b> - R350 <b>LRA</b> to KUMRU	
<b>LAMSA 1B</b> 122.050	R167 <b>LRA</b> - at D7 <b>LRA LT</b> direct <b>LRA</b> - <b>LT</b> intercept R284 <b>LRA</b> to LAMSA	
<b>MANAV 1B</b> 122.050	R167 <b>LRA</b> - at D7 <b>LRA LT</b> direct <b>LRA</b> - <b>RT</b> intercept R108 <b>LRA</b> to MANAV	

Nur für die Flugsimulation! Nicht für die reale Navigation verwenden!  
 For flight simulation only! Do not use for real navigation!

**SIDPT**

Antalya Intl. **Antalya** Turkey

**Effective 09-APR-2009**  
**02-APR-2009**

**SIDs RWY 18L (F DEPs)** 5-20

**LTAI-AYT**

**SIDs RWY 18L (F DEPs) (182°)**

**After take-off, contact Antalya APP.**

SID	ROUTING	ALTITUDES
<b>ADASU 1F</b> 122.050	QDR 167 RA - at 1700 LT direct RA - RT QDR 100 RA to ADASU	
<b>ALPAY 1F</b> 122.050	QDR 167 RA - at 2900 LT direct RA - LT QDR 263 RA to ALPAY	<b>RA MNM 5500</b>
<b>BRONZ 1F</b> 122.050	QDR 167 RA - at 1700 LT direct RA - QDR 313 RA to BRONZ	
<b>DAMLA 1F</b> 122.050	QDR 167 RA - at 2300 LT direct RA - RT QDR 021 RA to DAMLA	<b>RA MNM 4300</b>
<b>DERYA 1F</b> 122.050	QDR 167 RA - at 1700 RT intercept QDR 175 RA to DERYA	
<b>ERGIN 1F</b> 122.050	QDR 167 RA - at 1700 LT direct RA - LT QDR 295 RA to ERGIN	
<b>KONAK 1F</b> 122.050	QDR 167 RA - at 1700 LT direct RA - RT QDR 083 RA to KONAK	
<b>KUMRU 1F</b> 122.050	QDR 167 RA - at 1700 LT direct RA - QDR 350 RA to KUMRU	
<b>LAMSA 1F</b> 122.050	QDR 167 RA - at 1700 LT direct RA - LT QDR 285 RA to LAMSA	
<b>MANAV 1F</b> 122.050	QDR 167 RA - at 1700 LT direct RA - RT QDR 107 RA to MANAV	

**Nur für die Flugsimulation! Nicht für die reale Navigation verwenden!**  
**For flight simulation only! Do not use for real navigation!**

Turkey **Antalya** Antalya intl.

24-JUN-2010

**AYT-LTAI**

**5-30**

**SIDs RWYs 18C/R (S DEPs)**

**SIDPT**

**SIDs RWYs 18C/R (S DEPs)**

RWYs 18C/R (182°)

**After take-off, contact Antalya APP.**

DESIGNATOR	ROUTING	ALTITUDES
<b>ADASU 1S</b> 122.050	R197 <b>AYT</b> - at <b>1900 RT</b> to <b>AYT</b> - R106 <b>AYT</b> - join AWY N135	<b>AYT MNM 4000</b>
<b>ALPAY 1S</b> 122.050	R197 <b>AYT</b> - at <b>2700 RT</b> to <b>AYT</b> - R258 <b>AYT</b> - join AWY W79	<b>AYT MNM 5500</b>
<b>BRONZ 1S</b> 122.050	R197 <b>AYT</b> - at <b>1900 RT</b> to <b>AYT</b> - R310 <b>AYT</b> - join AWY R55	<b>AYT MNM 4000</b>
<b>DAMLA 1S</b> 122.050	R197 <b>AYT</b> - at <b>2200 RT</b> to <b>AYT</b> - R022 <b>AYT</b> - join AWY W77	<b>AYT MNM 4500</b>
<b>DERYA 1S</b> 122.050	R197 <b>AYT</b> - at D10 <b>AYT LT</b> intercept R175 <b>AYT</b> - join AWY A16	
<b>ERGIN 1S</b> 122.050	R197 <b>AYT</b> - at <b>1900 RT</b> to <b>AYT</b> - R292 <b>AYT</b> - join AWY N135	<b>AYT MNM 4000</b>
<b>KONAK 1S</b> 122.050	R197 <b>AYT</b> - at <b>1900 RT</b> to <b>AYT</b> - R087 <b>AYT</b> - join AWY R55	<b>AYT MNM 4000</b>
<b>KUMRU 1S</b> 122.050	R197 <b>AYT</b> - at <b>1900 RT</b> to <b>AYT</b> - R350 <b>AYT</b> - join AWY A16	<b>AYT MNM 4000</b>
<b>LAMSA 1S</b> 122.050	R197 <b>AYT</b> - at <b>1900RT</b> to <b>AYT</b> - R281 <b>AYT</b> - join AWY W89	<b>AYT MNM 4000</b>
<b>MANAV 1S</b> 122.050	R197 <b>AYT</b> - at <b>1900 RT</b> to <b>AYT</b> - R111 <b>AYT</b> - join AWY W83	<b>AYT MNM 4000</b>

**SIDs RWYs 18C/R (Y/Z DEPs) (182°)**

**After take-off, contact Antalya APP.**

	GS	120	150	180	210	240	270
3.5%	ft/MIN	500	600	700	800	900	1000
6.0%	ft/MIN	800	1000	1100	1300	1500	1700

SID	ROUTING	ALTITUDES
<b>ALPAY 1Y</b> 6.0% <b>122.050</b>	R183 <b>AYT</b> - at D10 <b>AYT RT</b> follow D10 <b>AYT</b> arc - intercept R258 <b>AYT</b> - join AWY W79	
<b>DAMLA 1Y</b> 3.5% <b>122.050</b>	R183 <b>AYT</b> - at D10 <b>AYT LT</b> follow D10 <b>AYT</b> arc - intercept R022 <b>AYT</b> - join AWY W77	
<b>DERYA 1Y</b> <b>122.050</b>	R183 <b>AYT</b> - at D10 <b>AYT LT</b> - intercept R175 <b>AYT</b> - join AWY A16	
<b>KONAK 1Y</b> 3.5% <b>122.050</b>	R183 <b>AYT</b> - at D10 <b>AYT LT</b> follow D10 <b>AYT</b> arc - intercept R087 <b>AYT</b> - join AWY R55	
<b>KUMRU 1Y</b> 3.5% <b>122.050</b>	R183 <b>AYT</b> - at D10 <b>AYT LT</b> follow D10 <b>AYT</b> arc - intercept R350 <b>AYT</b> - join AWY A16	
<b>LAMSA 1Y</b> <b>122.050</b>	R183 <b>AYT</b> - at D10 <b>AYT RT</b> follow D10 <b>AYT</b> arc - intercept R281 <b>AYT</b> - join AWY W89	
<b>LAMSA 1Z</b> <b>122.050</b>	R183 <b>AYT</b> - at D10 <b>AYT LT</b> follow D10 <b>AYT</b> arc - intercept R101 <b>AYT</b> to <b>AYT</b> - R281 <b>AYT</b> - join AWY W89	
<b>MANAV 1Y</b> <b>122.050</b>	R183 <b>AYT</b> - at D10 <b>AYT LT</b> follow D10 <b>AYT</b> arc - intercept R111 <b>AYT</b> - join AWY W83	

**Effective 09-APR-2009**

**02-APR-2009**

Turkey **Antalya** Antalya Intl.

**SIDPT**

**AYT-LTAI**

**5-50**

**SIDs RWY 36R (1A/C DEPs)**

**SIDs RWY 36R (1A/C DEPs) (002°)**

**After take-off, contact Antalya APP.**

	GS	120	150	180	210	240	270
4.0%	ft/MIN	500	700	800	900	1000	1100
4.5%	ft/MIN	600	700	900	1000	1100	1300
4.7%	ft/MIN	600	800	900	1000	1200	1300

<b>SID</b>	<b>ROUTING</b>	<b>ALTITUDES</b>
<b>ADASU 1A</b> 4.0% to LRA <b>122.050</b>	R017 <b>LRA</b> - at D7 <b>LRA RT</b> direct <b>LRA</b> - <b>LT</b> intercept R101 <b>LRA</b> to ADASU	
<b>ALPAY 1A</b> 4.7% to 10000 <b>122.050</b>	R017 <b>LRA</b> - at D7 <b>LRA RT</b> direct <b>LRA</b> - <b>RT</b> intercept R262 <b>LRA</b> to ALPAY	
<b>BRONZ 1A</b> 4.0% to LRA <b>122.050</b>	R017 <b>LRA</b> - at D7 <b>LRA RT</b> direct <b>LRA</b> - <b>RT</b> intercept R313 <b>LRA</b> to BRONZ	
<b>DAMLA 1A</b> 4.0% to 10000 <b>122.050</b>	R017 <b>LRA</b> - at D7 <b>LRA RT</b> direct <b>LRA</b> - <b>LT</b> intercept R021 <b>LRA</b> to DAMLA	
<b>DERYA 1A</b> 4.0% to LRA <b>122.050</b>	R017 <b>LRA</b> - at D7 <b>LRA RT</b> direct <b>LRA</b> - R176 <b>LRA</b> to DERYA	
<b>ERGIN 1A</b> 4.0% to LRA <b>122.050</b>	R017 <b>LRA</b> - at D7 <b>LRA RT</b> direct <b>LRA</b> - <b>RT</b> intercept R295 <b>LRA</b> to ERGIN	
<b>KONAK 1A</b> 4.0% to LRA <b>122.050</b>	R017 <b>LRA</b> - at D7 <b>LRA RT</b> direct <b>LRA</b> - <b>LT</b> intercept R084 <b>LRA</b> to KONAK	
<b>KUMRU 1A</b> 4.0% to LRA <b>122.050</b>	R017 <b>LRA</b> - at D7 <b>LRA RT</b> direct <b>LRA</b> - <b>RT</b> intercept R350 <b>LRA</b> to KUMRU	
<b>KUMRU 1C</b> 4.5% to 12000 <b>122.050</b>	R350 <b>LRA</b> to KUMRU	
<b>LAMSA 1A</b> 4.0% to LRA <b>122.050</b>	R017 <b>LRA</b> - at D7 <b>LRA RT</b> direct <b>LRA</b> - <b>RT</b> intercept R284 <b>LRA</b> to LAMSA	
<b>MANAV 1A</b> 4.0% to LRA <b>122.050</b>	R017 <b>LRA</b> - at D7 <b>LRA RT</b> direct <b>LRA</b> - <b>LT</b> intercept R108 <b>LRA</b> to MANAV	

**SIDs RWY 36R (2A DEPs) (002°)**

**After take-off, contact Antalya APP.**

	GS	120	150	180	210	240	270
4.0%	ft/MIN	500	700	800	900	1000	1100
4.7%	ft/MIN	600	800	900	1000	1200	1300

SID	ROUTING	ALTITUDES
<b>ADASU 2A</b> 4.7% to LRA <b>122.050</b>	R017 LRA - at <b>1800 RT</b> direct LRA - LT intercept R101 LRA to ADASU	<b>LRA MNM 4000</b>
<b>ALPAY 2A</b> 4.7% to 10000 <b>122.050</b>	R017 LRA - at <b>1800 RT</b> direct LRA - RT intercept R262 LRA to ALPAY	<b>LRA MNM 4000</b>
<b>BRONZ 2A</b> 4.7% to LRA <b>122.050</b>	R017 LRA - at <b>1800 RT</b> direct LRA - RT intercept R313 LRA to BRONZ	<b>LRA MNM 4000</b>
<b>DAMLA 2A</b> 4.0% to 10000 <b>122.050</b>	R017 LRA - at <b>1800 RT</b> direct LRA - RT intercept R021 LRA to DAMLA	<b>LRA MNM 4000</b>
<b>DERYA 2A</b> 4.7% to LRA <b>122.050</b>	R017 LRA - at <b>1800 RT</b> direct LRA - R176 LRA to DERYA	<b>LRA MNM 4000</b>
<b>ERGIN 2A</b> 4.7% to LRA <b>122.050</b>	R017 LRA - at <b>1800 RT</b> direct LRA - RT intercept R295 LRA to ERGIN	<b>LRA MNM 4000</b>
<b>KONAK 2A</b> 4.7% to LRA <b>122.050</b>	R017 LRA - at <b>1800 RT</b> direct LRA - LT intercept R084 LRA to KONAK	<b>LRA MNM 4000</b>
<b>KUMRU 2A</b> 4.7% to LRA <b>122.050</b>	R017 LRA - at <b>1800 RT</b> direct LRA - RT intercept R350 LRA to KUMRU	<b>LRA MNM 4000</b>
<b>LAMSA 2A</b> 4.7% to LRA <b>122.050</b>	R017 LRA - at <b>1800 RT</b> direct LRA - RT intercept R284 LRA to LAMSA	<b>LRA MNM 4000</b>
<b>MANAV 2A</b> 4.7% to LRA <b>122.050</b>	R017 LRA - at <b>1800 RT</b> direct LRA - LT intercept R108 LRA to MANAV	<b>LRA MNM 4000</b>

**Effective 09-APR-2009**

**02-APR-2009**

Turkey **Antalya** Antalya Intl.

**AYT-LTAI**

**5-70**

**SIDs RWY 36R (H DEPs)**

**SIDPT**

**SIDs RWY 36R (H DEPs) (002°)**

**After take-off, contact Antalya APP.**

	GS	120	150	180	210	240	270
4.0%	ft/MIN	500	700	800	900	1000	1100
4.7%	ft/MIN	600	800	900	1000	1200	1300

SID	ROUTING	ALTITUDES
<b>ADASU 1H</b> 4.7% to RA <b>122.050</b>	QDR 017 RA - at <b>1800 RT</b> direct RA - LT QDR 100 RA to ADASU	<b>RA MNM 4000</b>
<b>ALPAY 1H</b> 4.7% to 10000 <b>122.050</b>	QDR 017 RA - at <b>1800 RT</b> direct RA - RT QDR 263 RA to ALPAY	<b>RA MNM 4000</b>
<b>BRONZ 1H</b> 4.7% to RA <b>122.050</b>	QDR 017 RA - at <b>1800 RT</b> direct RA - RT QDR 313 RA to BRONZ	<b>RA MNM 4000</b>
<b>DAMLA 1H</b> 4.0% to 10000 <b>122.050</b>	QDR 017 RA - at <b>1800 RT</b> direct RA - RT QDR 021 RA to DAMLA	<b>RA MNM 4000</b>
<b>DERYA 1H</b> 4.7% to RA <b>122.050</b>	QDR 017 RA - at <b>1800 RT</b> direct RA - QDR 175 RA to DERYA	<b>RA MNM 4000</b>
<b>ERGIN 1H</b> 4.7% to RA <b>122.050</b>	QDR 017 RA - at <b>1800 RT</b> direct RA - RT QDR 295 RA to ERGIN	<b>RA MNM 4000</b>
<b>KONAK 1H</b> 4.7% to RA <b>122.050</b>	QDR 017 RA - at <b>1800 RT</b> direct RA - LT QDR 083 RA to KONAK	<b>RA MNM 4000</b>
<b>KUMRU 1H</b> 4.7% to RA <b>122.050</b>	QDR 017 RA - at <b>1800 RT</b> direct RA - RT QDR 350 RA to KUMRU	<b>RA MNM 4000</b>
<b>LAMSA 1H</b> 4.7% to RA <b>122.050</b>	QDR 017 RA - at <b>1800 RT</b> direct RA - RT QDR 285 RA to LAMSA	<b>RA MNM 4000</b>
<b>MANAV 1H</b> 4.7% to RA <b>122.050</b>	QDR 017 RA - at <b>1800 RT</b> direct RA - LT QDR 107 RA to MANAV	<b>RA MNM 4000</b>



**SIDs RWY 36R (N DEPs) (002°)**

**After take-off, contact Antalya APP.**

	GS	120	150	180	210	240	270
4.0%	ft/MIN	500	700	800	900	1000	1100
4.5%	ft/MIN	600	700	900	1000	1100	1300
4.7%	ft/MIN	600	800	900	1000	1200	1300

SID	ROUTING	ALTITUDES
<b>ADASU 1N</b> 4.5% to LRA <b>122.050</b>	R017 <b>LRA</b> - at D8 <b>LRA RT</b> direct <b>LRA</b> - <b>LT</b> intercept R101 <b>LRA</b> to ADASU	D8 <b>LRA MNM 1800</b> <b>LRA MNM 4000</b>
<b>ALPAY 1N</b> 4.7% to 10000 <b>122.050</b>	R017 <b>LRA</b> - at D8 <b>LRA RT</b> direct <b>LRA</b> - <b>RT</b> intercept R262 <b>LRA</b> to ALPAY	D8 <b>LRA MNM 1800</b> <b>LRA MNM 4000</b>
<b>BRONZ 1N</b> 4.5% to LRA <b>122.050</b>	R017 <b>LRA</b> - at D8 <b>LRA RT</b> direct <b>LRA</b> - <b>RT</b> intercept R313 <b>LRA</b> to BRONZ	D8 <b>LRA MNM 1800</b> <b>LRA MNM 4000</b>
<b>DAMLA 1N</b> 4.0% to 10000 <b>122.050</b>	R017 <b>LRA</b> - at D8 <b>LRA RT</b> direct <b>LRA</b> - <b>RT</b> intercept R021 <b>LRA</b> to DAMLA	D8 <b>LRA MNM 1800</b> <b>LRA MNM 4000</b>
<b>DERYA 1N</b> 4.5% to LRA <b>122.050</b>	R017 <b>LRA</b> - at D8 <b>LRA RT</b> direct <b>LRA</b> - R176 <b>LRA</b> to DERYA	D8 <b>LRA MNM 1800</b> <b>LRA MNM 4000</b>
<b>ERGIN 1N</b> 4.5% to LRA <b>122.050</b>	R017 <b>LRA</b> - at D8 <b>LRA RT</b> direct <b>LRA</b> - <b>RT</b> intercept R295 <b>LRA</b> to ERGIN	D8 <b>LRA MNM 1800</b> <b>LRA MNM 4000</b>
<b>KONAK 1N</b> 4.5% to LRA <b>122.050</b>	R017 <b>LRA</b> - at D8 <b>LRA RT</b> direct <b>LRA</b> - <b>LT</b> intercept R084 <b>LRA</b> to KONAK	D8 <b>LRA MNM 1800</b> <b>LRA MNM 4000</b>
<b>KUMRU 1N</b> 4.5% to LRA <b>122.050</b>	R017 <b>LRA</b> - at D8 <b>LRA RT</b> direct <b>LRA</b> - <b>RT</b> intercept R350 <b>LRA</b> to KUMRU	D8 <b>LRA MNM 1800</b> <b>LRA MNM 4000</b>
<b>LAMSA 1N</b> 4.5% to LRA <b>122.050</b>	R017 <b>LRA</b> - at D8 <b>LRA RT</b> direct <b>LRA</b> - <b>RT</b> intercept R284 <b>LRA</b> to LAMSA	D8 <b>LRA MNM 1800</b> <b>LRA MNM 4000</b>
<b>MANAV 1N</b> 4.5% to LRA <b>122.050</b>	R017 <b>LRA</b> - at D8 <b>LRA RT</b> direct <b>LRA</b> - <b>LT</b> intercept R108 <b>LRA</b> to MANAV	D8 <b>LRA MNM 1800</b> <b>LRA MNM 4000</b>

16-OCT-2008

**AYT-LTAI**

5-90

**SIDs RWYs 36L/C (K/L DEPs)**

**SIDPT**

**SIDs RWYs 36L/C (K/L DEPs) (002°)**

**After take-off, contact Antalya APP.**

	GS	120	150	180	210	240	270
5.0%	ft/MIN	700	800	1000	1100	1300	1400

SID	ROUTING	ALTITUDES
<b>ADASU 1K</b> 5.0% until leaving D5 AYT arc <b>122.050</b>	R001 <b>AYT</b> - at D5 <b>AYT RT</b> follow D5 <b>AYT</b> arc - intercept R106 <b>AYT</b> to <b>ADASU</b> - join AWY N135	
<b>ALPAY 1K</b> 5.0% to AYT <b>122.050</b>	R001 <b>AYT</b> - at D5 <b>AYT RT</b> follow D5 <b>AYT</b> arc - intercept R120 <b>AYT</b> to <b>AYT - LT</b> intercept R258 <b>AYT</b> to <b>ALPAY</b> - join AWY W79	<b>AYT MNM 6500</b>
<b>ALPAY 1L</b> 5.0% until leaving D5 AYT arc <b>122.050</b>	R001 <b>AYT</b> - at D5 <b>AYT RT</b> follow D5 <b>AYT</b> arc - intercept R258 <b>AYT</b> to <b>ALPAY</b> - join AWY W79	
<b>BRONZ 1K</b> 5.0% to AYT <b>122.050</b>	R001 <b>AYT</b> - at D5 <b>AYT RT</b> follow D5 <b>AYT</b> arc - intercept R120 <b>AYT</b> to <b>AYT - RT</b> intercept R310 <b>AYT</b> to <b>BRONZ</b> - join AWY R55	<b>AYT MNM 6500</b>
<b>DAMLA 1K</b> 5.0% to AYT <b>122.050</b>	R001 <b>AYT</b> - at D5 <b>AYT RT</b> follow D5 <b>AYT</b> arc - intercept R120 <b>AYT</b> to <b>AYT - RT</b> intercept R022 <b>AYT</b> to <b>DAMLA</b> - join AWY W77	<b>AYT MNM 6500</b>
<b>DERYA 1K</b> 5.0% until leaving D5 AYT arc <b>122.050</b>	R001 <b>AYT</b> - at D5 <b>AYT RT</b> follow D5 <b>AYT</b> arc - intercept R175 <b>AYT</b> to <b>DERYA</b> - join AWY A16	
<b>ERGIN 1K</b> 5.0% to AYT <b>122.050</b>	R001 <b>AYT</b> - at D5 <b>AYT RT</b> follow D5 <b>AYT</b> arc - intercept R120 <b>AYT</b> to <b>AYT - LT</b> intercept R292 <b>AYT</b> to <b>ERGIN</b> - join AWY N135	<b>AYT MNM 6500</b>
<b>KONAK 1K</b> 5.0% until leaving D5 AYT arc <b>122.050</b>	R001 <b>AYT</b> - at D5 <b>AYT RT</b> follow D5 <b>AYT</b> arc - intercept R087 <b>AYT</b> to <b>KONAK</b> - join AWY R55	
<b>KUMRU 1K</b> 5.0% to AYT <b>122.050</b>	R001 <b>AYT</b> - at D5 <b>AYT RT</b> follow D5 <b>AYT</b> arc - intercept R120 <b>AYT</b> to <b>AYT - RT</b> intercept R350 <b>AYT</b> to <b>KUMRU</b> - join AWY A16	<b>AYT MNM 6500</b>
<b>LAMSA 1K</b> 5.0% to AYT <b>122.050</b>	R001 <b>AYT</b> - at D5 <b>AYT RT</b> follow D5 <b>AYT</b> arc - intercept R120 <b>AYT</b> to <b>AYT - LT</b> intercept R281 <b>AYT</b> to <b>LAMSA</b> - join AWY W89	<b>AYT MNM 6500</b>
<b>LAMSA 1L</b> 5.0% until leaving D5 AYT arc <b>122.050</b>	R001 <b>AYT</b> - at D5 <b>AYT RT</b> follow D5 <b>AYT</b> arc - intercept R281 <b>AYT</b> to <b>LAMSA</b> - join AWY W89	

Nur für die Flugsimulation! Nicht für die reale Navigation verwenden!  
For flight simulation only! Do not use for real navigation!

**SIDPT**

Antalya Intl. **Antalya** Turkey

16-OCT-2008

**SIDs RWYs 36L/C (K/L DEPs)** 5-100

**LTAI-AYT**

**SIDs RWYs 36L/C (K/L DEPs) (002°)**

SID	ROUTING	ALTITUDES
<b>MANAV 1K</b> 5.0% until leaving D5 AYT arc <b>122.050</b>	R001 AYT - at D5 AYT RT follow D5 AYT arc - intercept R111 AYT to MANAV - join AWY W83	

24-JUN-2010

**AYT-LTAI**

**5-110**

**SIDs RWYs 36L/C (M/T DEPs)**

**SIDPT**

**SIDs RWYs 36L/C (M/T DEPs)**

RWYs 36L/C (002°)

**After take-off, contact Antalya APP.**

	GS	120	150	180	210	240	270
4.0%	ft/MIN	500	700	800	900	1000	1100
5.0%	ft/MIN	700	800	1000	1100	1300	1400
5.3%	ft/MIN	700	900	1000	1200	1300	1500
5.8%	ft/MIN	800	900	1100	1300	1500	1600

DESIGNATOR	ROUTING	ALTITUDES
<b>ADASU 1T</b> 5.0% to AYT <b>122.050</b>	R347 <b>AYT</b> - at D5 <b>AYT LT</b> to <b>AYT</b> - R106 <b>AYT</b> - join AWY N135	
<b>ALPAY 1T</b> 5.3% to 10000 <b>122.050</b>	R347 <b>AYT</b> - at D5 <b>AYT LT</b> to <b>AYT</b> - R258 <b>AYT</b> - join AWY W79	
<b>BRONZ 1T</b> 5.0% to AYT <b>122.050</b>	R347 <b>AYT</b> - at D5 <b>AYT LT</b> to <b>AYT</b> - R310 <b>AYT</b> - join AWY R55	
<b>DAMLA 1T</b> <b>122.050</b>	R347 <b>AYT</b> - at D5 <b>AYT LT</b> to <b>AYT</b> - R022 <b>AYT</b> (within D10 <b>AYT</b> ) - join AWY W77	<b>AYT MNM 3500</b> D15 <b>AYT MNM 8500</b>
<b>DERYA 1T</b> 5.0% to AYT <b>122.050</b>	R347 <b>AYT</b> - at D5 <b>AYT LT</b> to <b>AYT</b> - R175 <b>AYT</b> - join AWY A16	
<b>ERGIN 1T</b> 5.0% to AYT <b>122.050</b>	R347 <b>AYT</b> - at D5 <b>AYT LT</b> to <b>AYT</b> - R292 <b>AYT</b> - join AWY N135	D15 <b>AYT MNM 6250</b>
<b>KONAK 1T</b> 5.0% to AYT <b>122.050</b>	R347 <b>AYT</b> - at D5 <b>AYT LT</b> to <b>AYT</b> - R087 <b>AYT</b> - join AWY R55	
<b>KUMRU 1M</b> 5.8% to D10 AYT 4.0% to D20 AYT <b>122.050</b>	intercept R347 <b>AYT</b> at MNM <b>3000 RT</b> intercept R350 <b>AYT</b> join AWY A16	
<b>KUMRU 1T</b> 5.0% to AYT <b>122.050</b>	R347 <b>AYT</b> - at D5 <b>AYT LT</b> to <b>AYT</b> - R350 <b>AYT</b> - join AWY A16	
<b>LAMSA 1T</b> 5.0% to AYT <b>122.050</b>	R347 <b>AYT</b> - at D5 <b>AYT LT</b> to <b>AYT</b> - R281 <b>AYT</b> - join AWY W89	D10 <b>AYT MNM 6300</b>
<b>MANAV 1T</b> <b>122.050</b>	R347 <b>AYT</b> - at D5 <b>AYT LT</b> to <b>AYT</b> - R111 <b>AYT</b> - join AWY W83	

**Nur für die Flugsimulation! Nicht für die reale Navigation verwenden!**  
**For flight simulation only! Do not use for real navigation!**

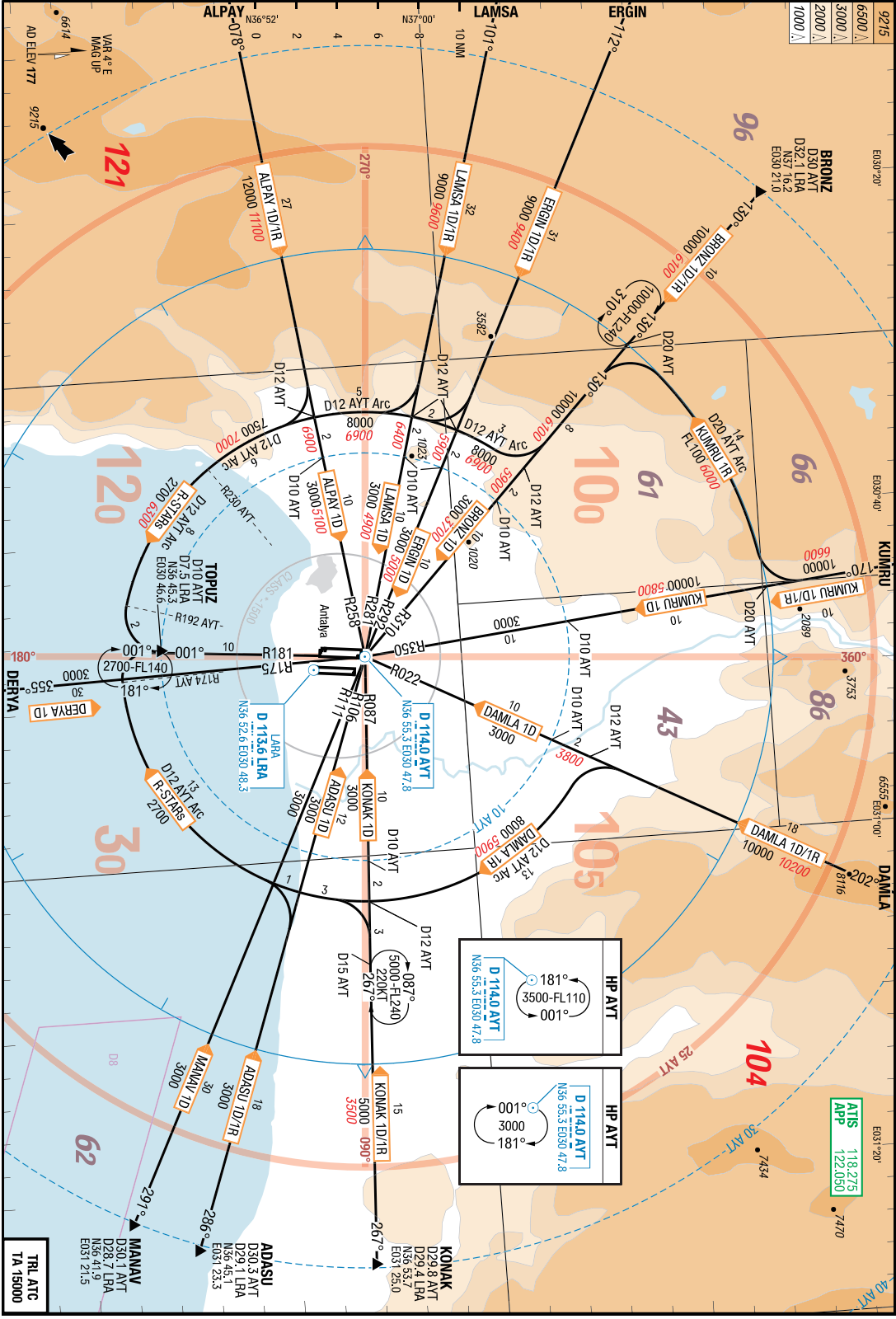
15-OCT-2009  
**AVT-LTAI**

Turkey Antalya Antalya Intl.  
(STARS via LARA (LRA))  
**6-10 STARS via ANTALYA (AVT)**

**STAR STAR**

Antalya Intl. Antalya Turkey  
(STARS via LARA (LRA))  
**STARS via ANTALYA (AVT)**

**ATIS** 118.275  
 122.050  
APP



**TRF ATC**  
 TA 15000

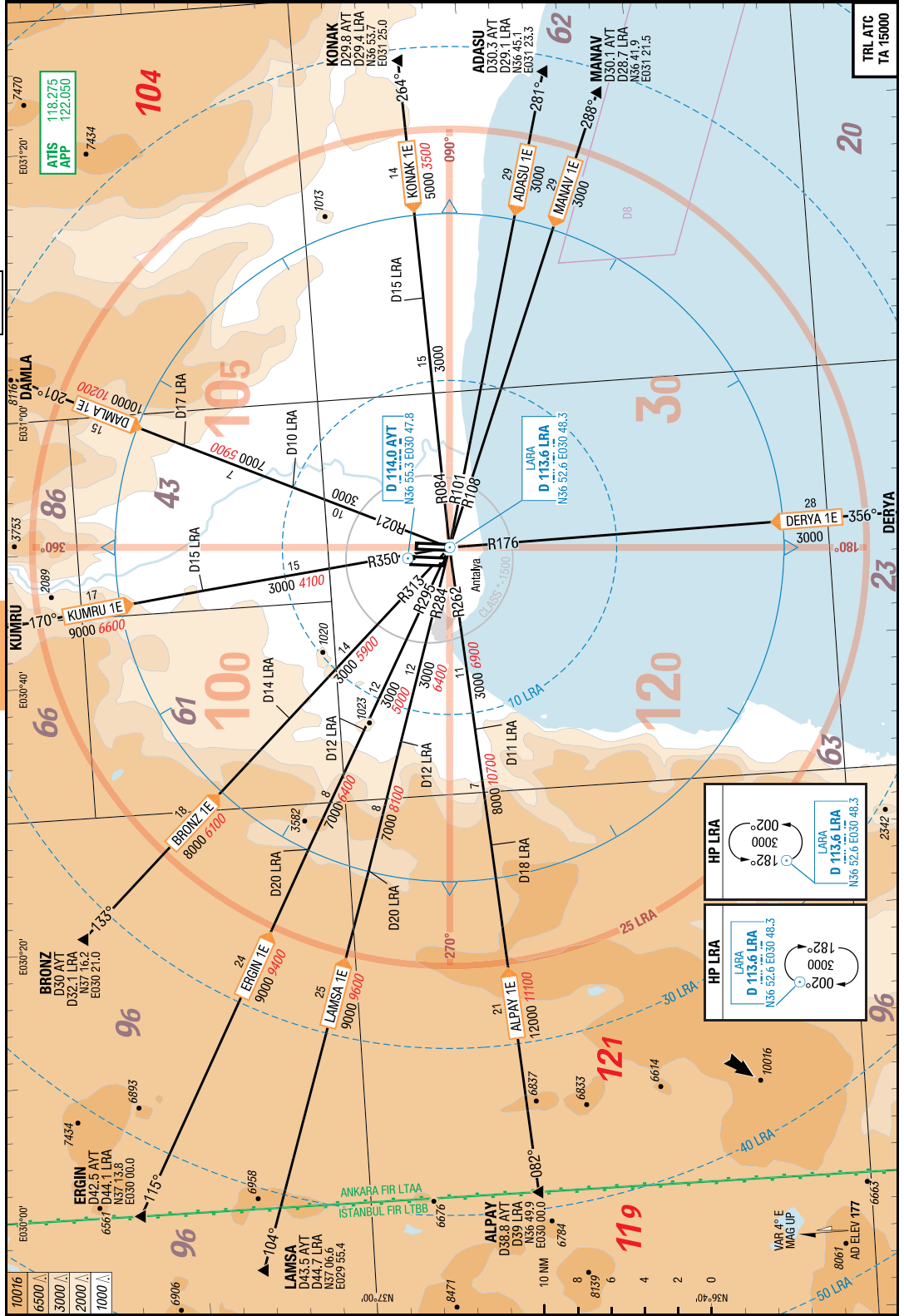
**Nur für die Flugsimulation! Nicht für die reale Navigation verwenden!**  
**For flight simulation only! Do not use for real navigation!**

15-OCT-2009  
**LTAI-AYT**

Antalya intl. Antalya Turkey  
**STAR STAR**  
**STARS via LARA (LRA)** **6-20**

Turkey Antalya Antalya intl.  
**STAR STAR**  
**STARS via LARA (LRA)**

**TRL ATC**  
**TA 15000**



<p><b>HP LRA</b></p> <p>LARA  <b>D 113.6 LRA</b>          N36 52.6 E030 48.3</p>	<p><b>HP LRA</b></p> <p>LARA  <b>D 113.6 LRA</b>          N36 52.6 E030 48.3</p>
--	--

Nur für die Flugsimulation! Nicht für die reale Navigation verwenden!  
 For flight simulation only! Do not use for real navigation!

15-OCT-2009

AYT-LTAI

Turkey Antalya Antalya Intl.

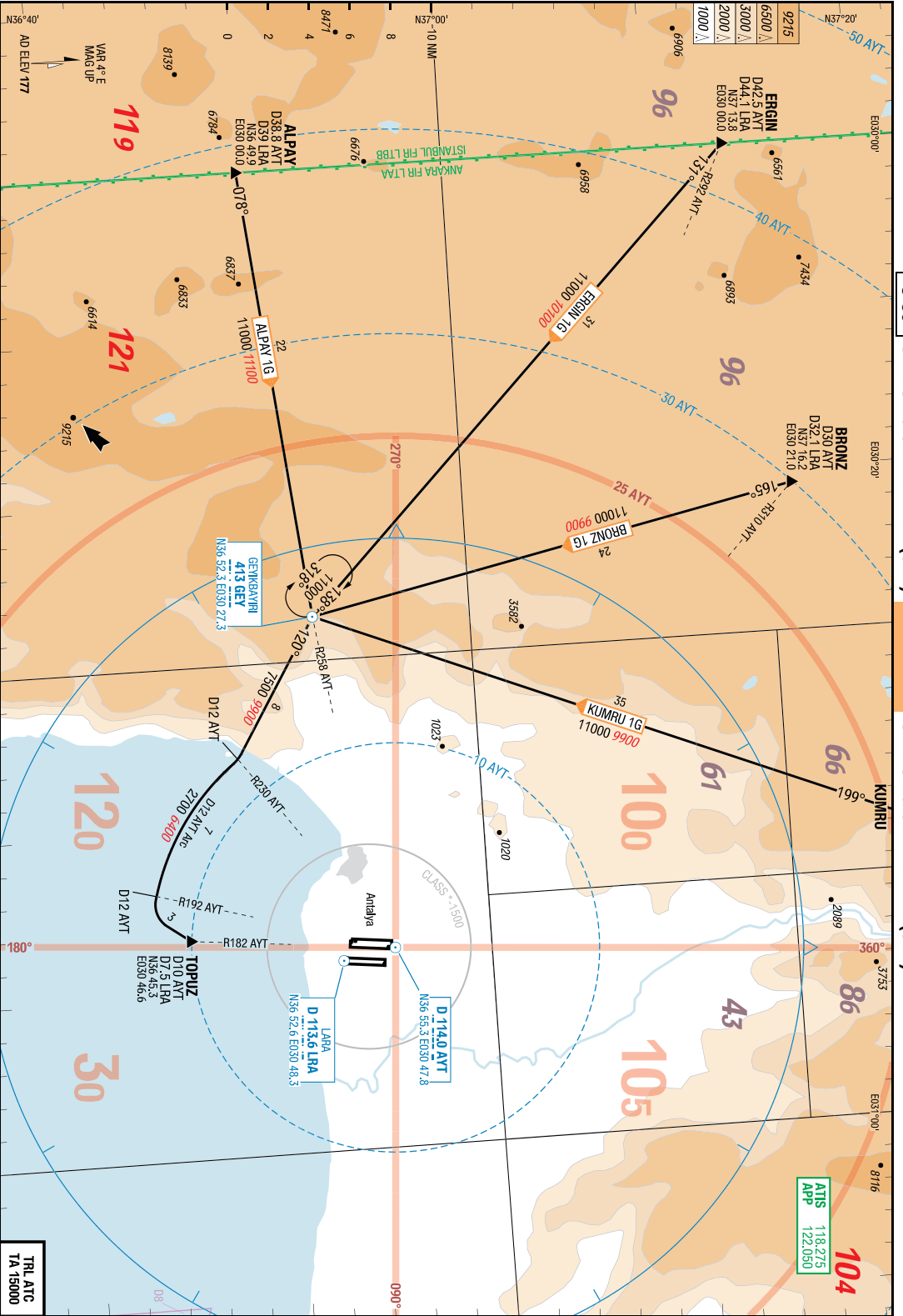
STAR  
STAR

Antalya Intl. Antalya Turkey

STARs via GEYIKBAYIRI (GEY)

6-30

STARs via GEYIKBAYIRI (GEY)



Nur für die Flugsimulation! Nicht für die reale Navigation verwenden!  
 For flight simulation only! Do not use for real navigation!

Turkey **Antalya** Antalya intl.

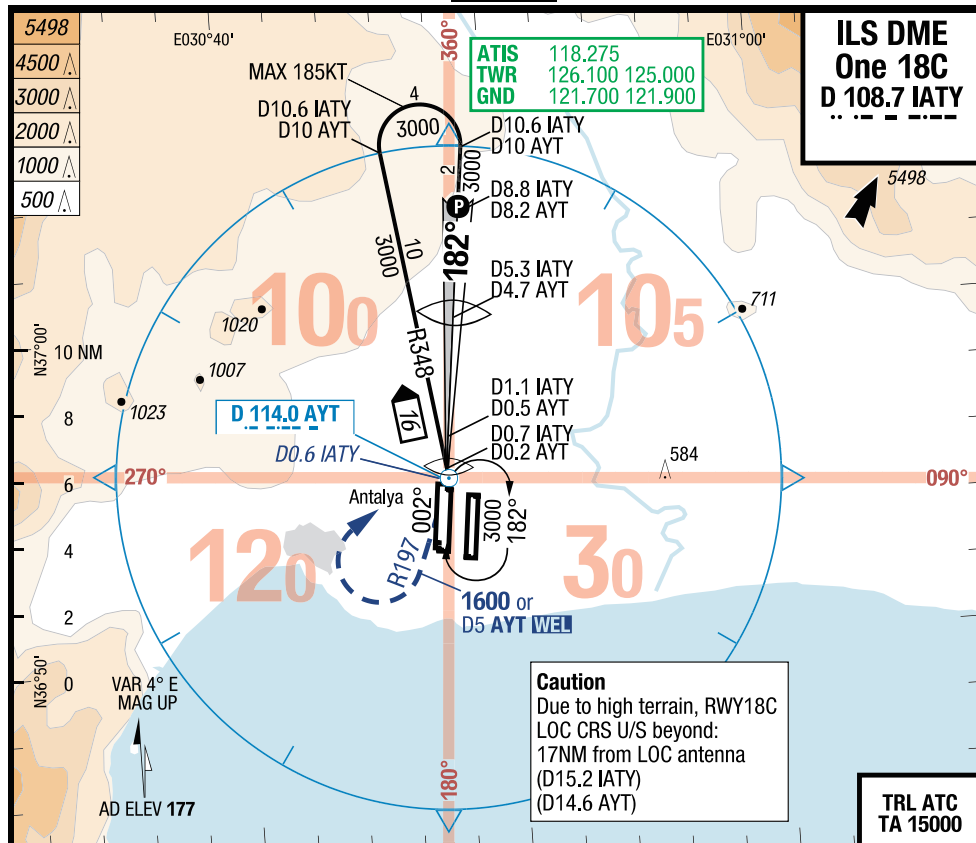
IAC

07-JAN-2010

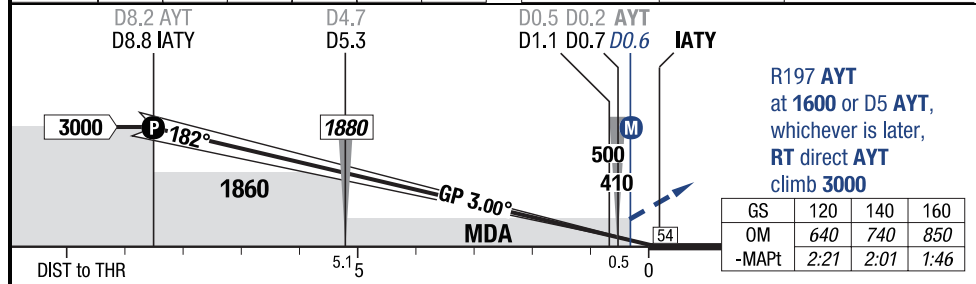
**AYT-LTAI**

7-10

**ILS DME One 18C**



LOC 3.00° D IATY	8.8	6	4	3	2	1	<b>18C</b> HL-P1F 176 / 6hPa TDZ ---% 0.0%
	3000	2110	1470	1140	820	490	



<b>18C</b>		<b>Cat 1</b>	<b>LOC DME</b>		<b>Circling</b>
C	ft - m/km ft	200 - 550 <b>380</b>	330 - 1.0 <b>500</b>		830 - 2.4V <b>1000</b>
D	ft - m/km ft	200 - 550 <b>380</b>	330 - 1.4 <b>500</b>		830 - 3.6V <b>1000</b>



Nur für die Flugsimulation! Nicht für die reale Navigation verwenden!  
 For flight simulation only! Do not use for real navigation!

IAC

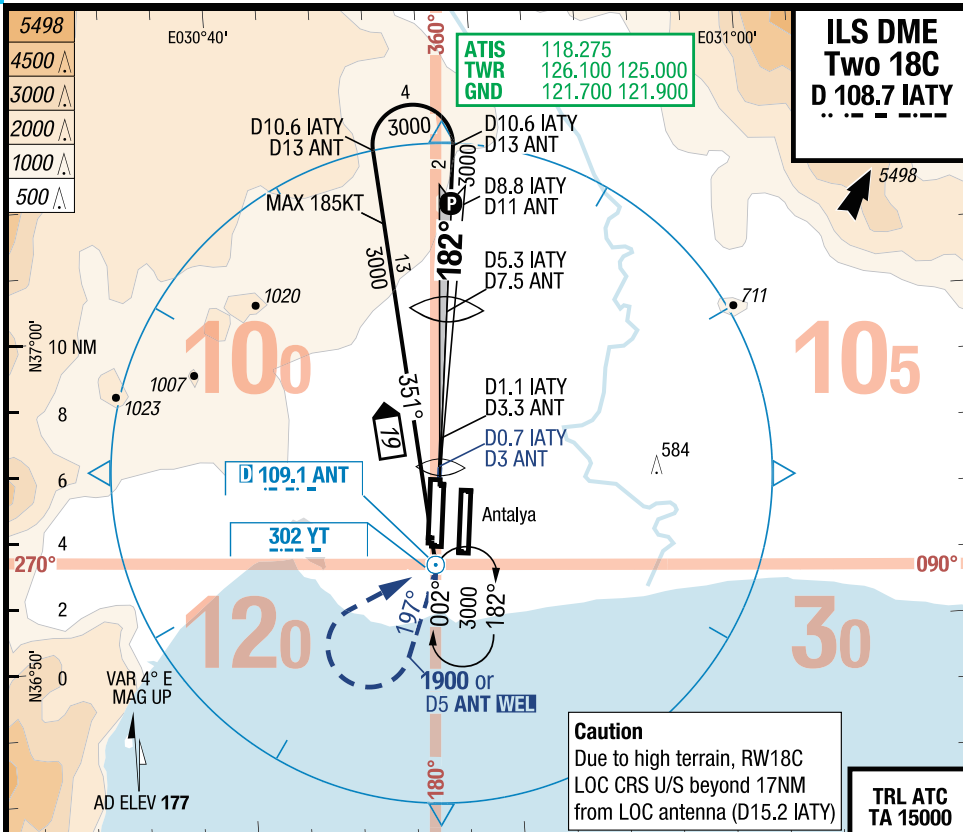
# Antalya intl. Antalya Turkey

07-JAN-2010

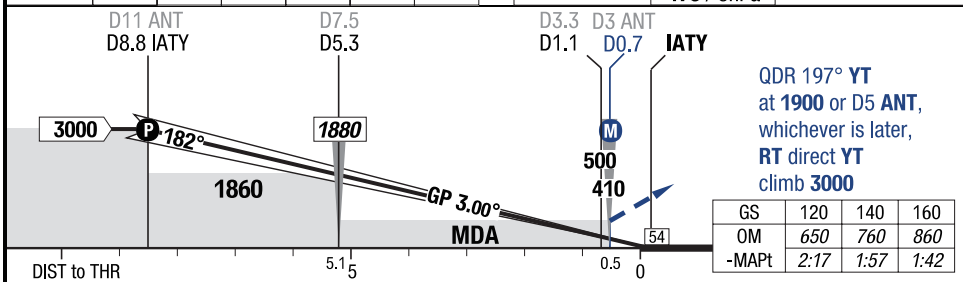
## ILS DME Two 18C

7-20

LTAI-AYT



LOC 3.00° D IATY	8.8	7	6	5	4	3		3.0°	60 HL
	3000	2440	2110	1790	1470	1140		176 / 6hPa	0.0%



<b>18C</b>	<b>Cat 1</b>	<b>LOC DME</b>	<b>Circling</b>
C	ft - m/km ft	200 - 550 <b>380</b>	330 - 1.0 <b>500</b>
D	ft - m/km ft	200 - 550 <b>380</b>	330 - 1.4 <b>500</b>
			830 - 2.4V <b>1000</b>
			830 - 3.6V <b>1000</b>

Nur für die Flugsimulation! Nicht für die reale Navigation verwenden!  
 For flight simulation only! Do not use for real navigation!

Turkey **Antalya** Antalya intl.

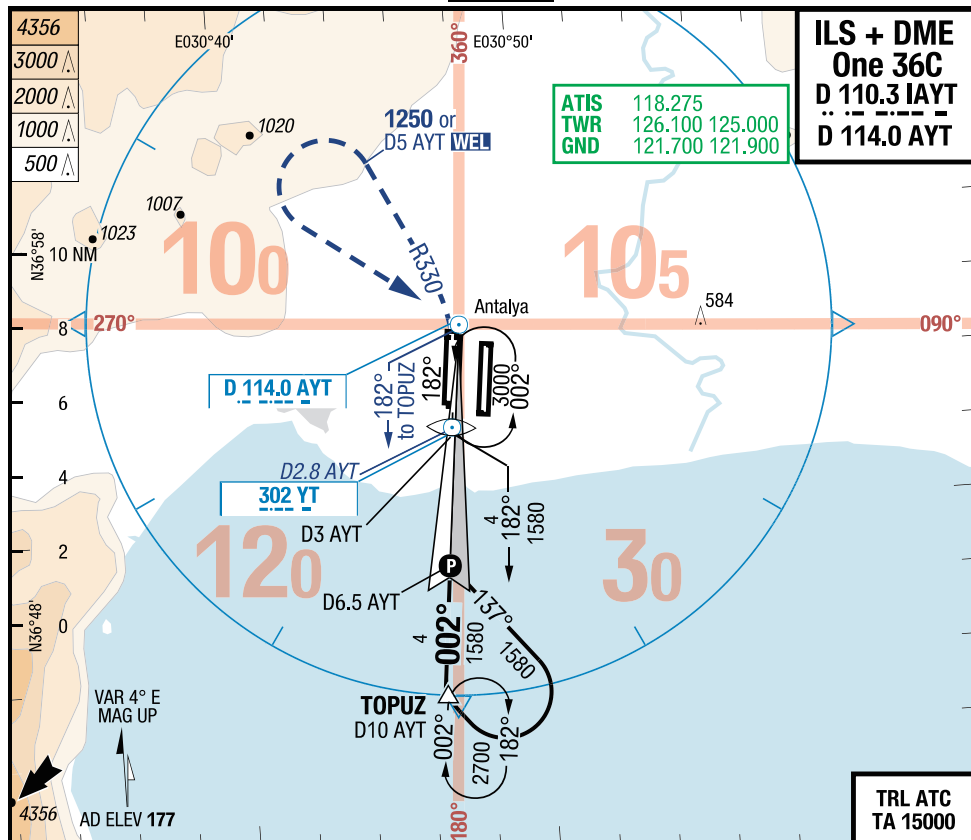
IAC

22-APR-2010

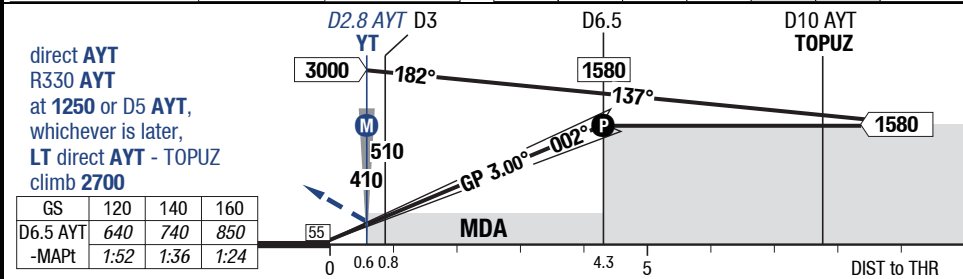
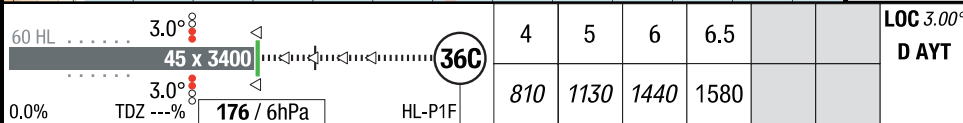
**AYT-LTAI**

7-30

**ILS + DME One 36C**



TRL ATC  
TA 15000



36C		Cat 1 DME	LOC DME				Circling
C	ft - m/km ft	200 - 550 380	340 - 1.0 510				830 - 2.4V 1000
D	ft - m/km ft	200 - 550 380	340 - 1.4 510				830 - 3.6V 1000

Nur für die Flugsimulation! Nicht für die reale Navigation verwenden!  
 For flight simulation only! Do not use for real navigation!

IAC

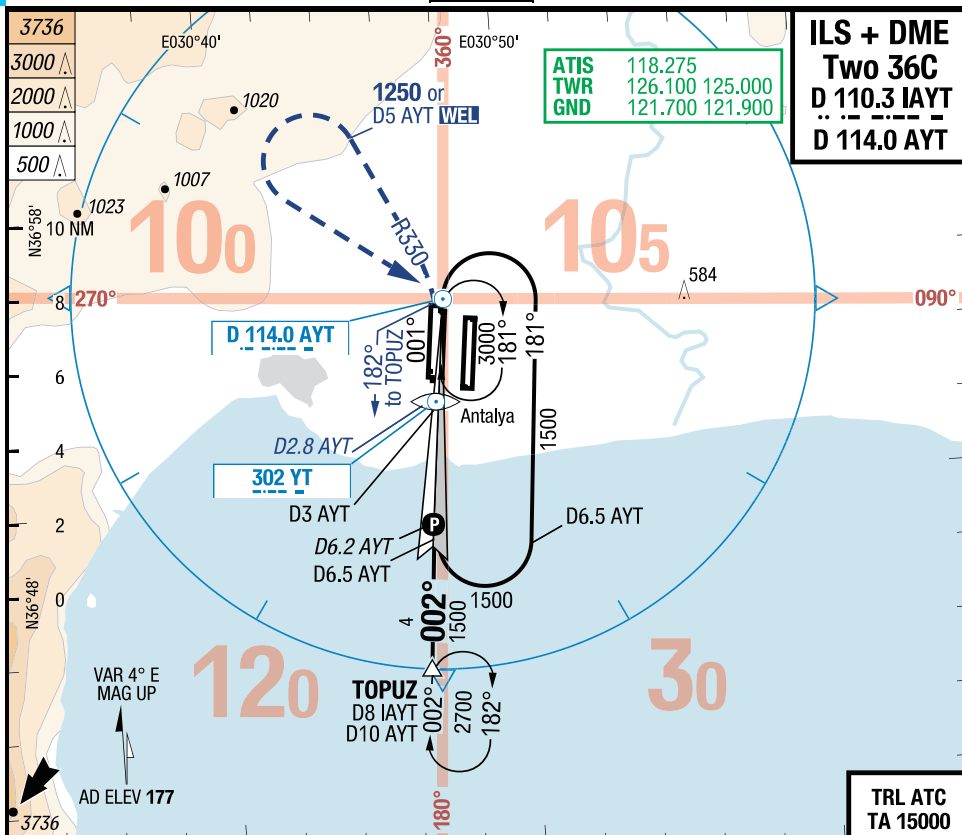
# Antalya intl. Antalya Turkey

22-APR-2010

## ILS + DME Two 36C

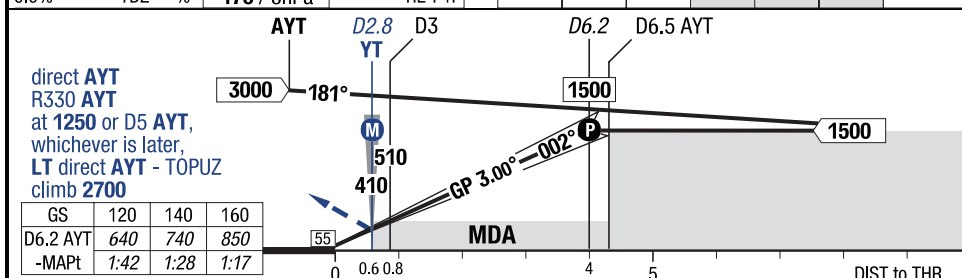
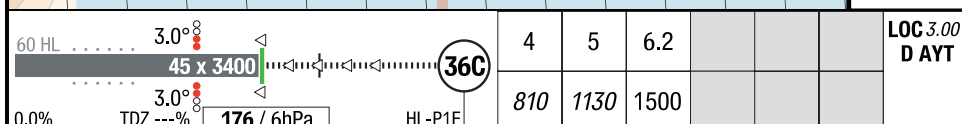
7-40

LTAI-AYT



**ILS + DME  
Two 36C**  
**D 110.3 IAYT**  
**D 114.0 AYT**

**TRL ATC  
TA 1500**



direct AYT  
 R330 AYT  
 at 1250 or D5 AYT,  
 whichever is later,  
 LT direct AYT - TOPUZ  
 climb 2700

GS	120	140	160
D6.2 AYT	640	740	850
-MAPt	1:42	1:28	1:17

<b>36C</b>		<b>Cat 1 DME</b>	<b>LOC DME</b>			<b>Circling</b>
C	ft - m/km ft	200 - 550 <b>380</b>	340 - 1.0 <b>510</b>			830 - 2.4V <b>1000</b>
D	ft - m/km ft	200 - 550 <b>380</b>	340 - 1.4 <b>510</b>			830 - 3.6V <b>1000</b>

Nur für die Flugsimulation! Nicht für die reale Navigation verwenden!  
 For flight simulation only! Do not use for real navigation!

Effective 22-OCT-2009  
 15-OCT-2009

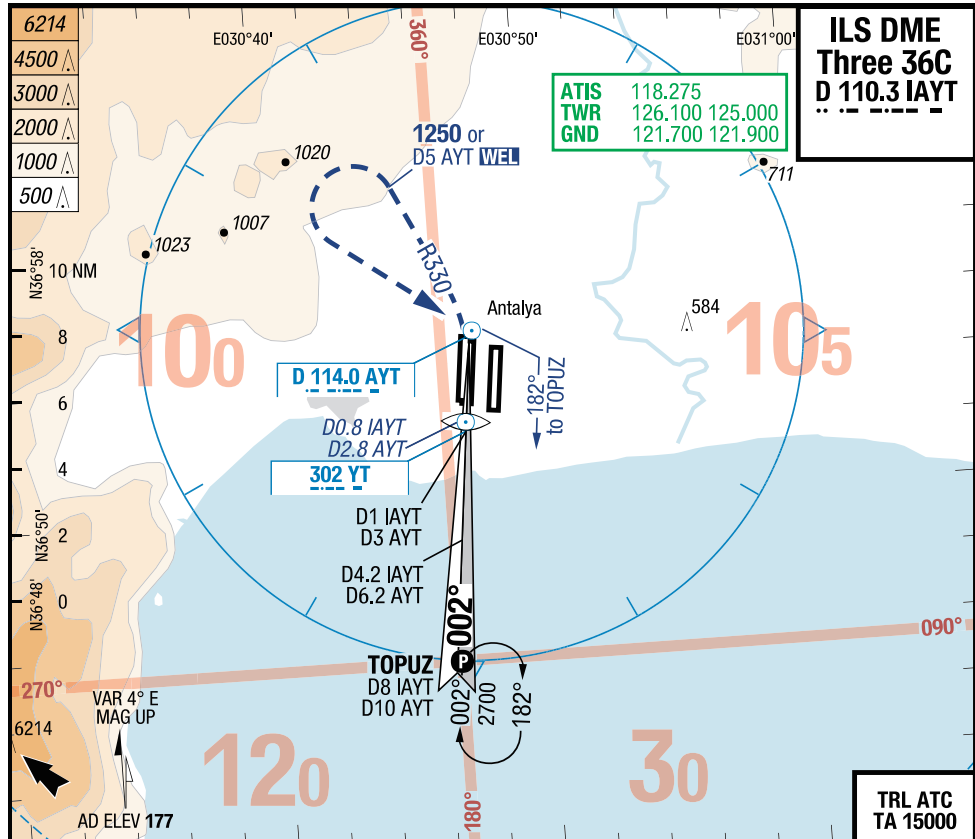
Turkey Antalya Antalya intl.

IAC

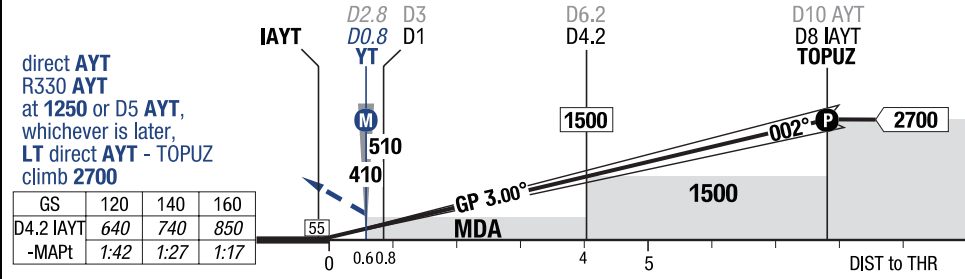
AYT-LTAI

7-50

ILS DME Three 36C



60 HL	3.0°									LOC 3.00°
45 x 3400										D IAYT
0.0%	3.0°									
TDZ ---%	176 / 6hPa									



36C		Cat 1 DME	LOC DME	Circling	
C	ft - m/Km ft	200 - 550 380	340 - 1.0 510	830 - 2.4V 1000	
D	ft - m/Km ft	200 - 550 380	340 - 1.4 510	830 - 3.6V 1000	

Nur für die Flugsimulation! Nicht für die reale Navigation verwenden!  
 For flight simulation only! Do not use for real navigation!

IAC

Antalya intl. **Antalya** Turkey

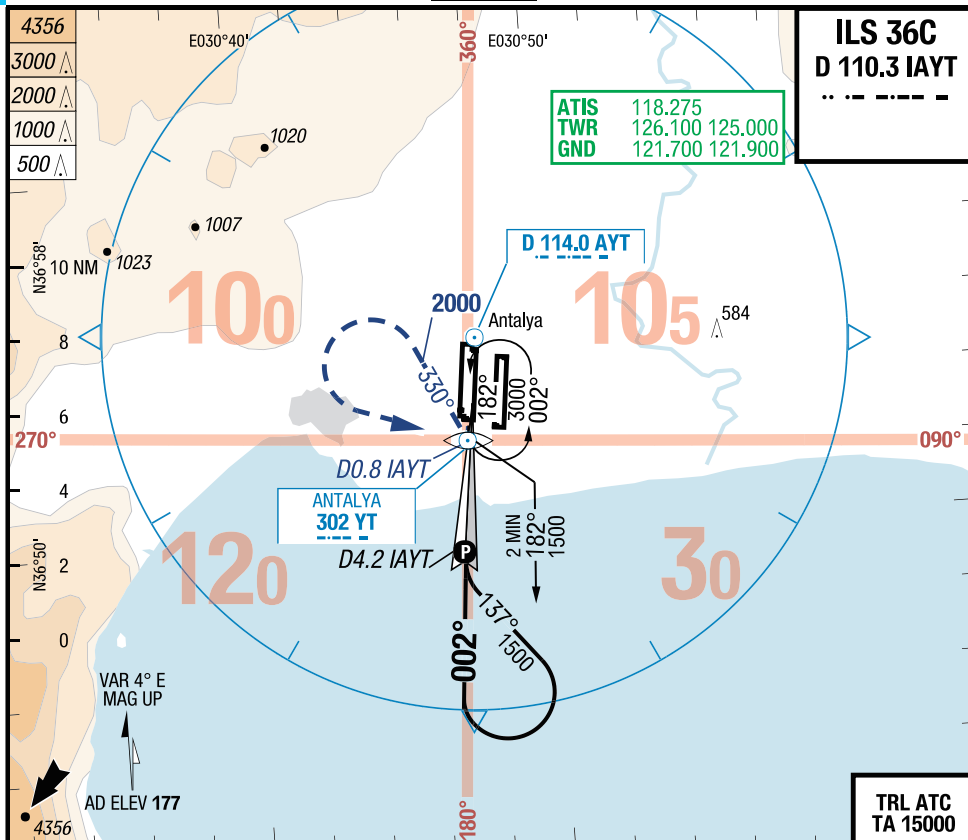
Effective **22-OCT-2009**

15-OCT-2009

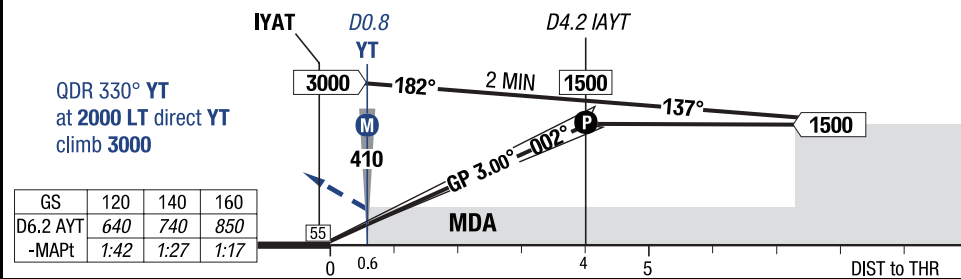
**ILS 36C**

**7-60**

**LTAI-AYT**



60 HL	3.0°	2	3	4	4.2	LOC 3.00°
45 x 3400	3.0°	810	1130	1450	1500	D IAYT
0.0%	TDZ ---%	176 / 6hPa	HL-P1F			



36C	Cat 1	LOC	Circling	
C	ft - m/km ft	200 - 550 <b>380</b>	340 - 1.0 <b>510</b>	830 - 2.4V <b>1000</b>
D	ft - m/km ft	200 - 550 <b>380</b>	340 - 1.4 <b>510</b>	830 - 3.6V <b>1000</b>

Nur für die Flugsimulation! Nicht für die reale Navigation verwenden!  
 For flight simulation only! Do not use for real navigation!

Effective 22-OCT-2009  
 15-OCT-2009

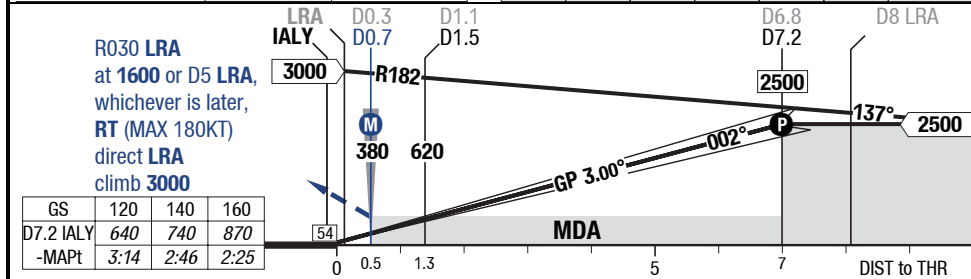
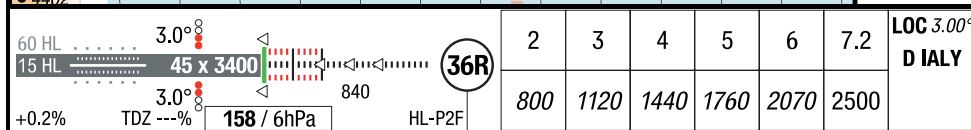
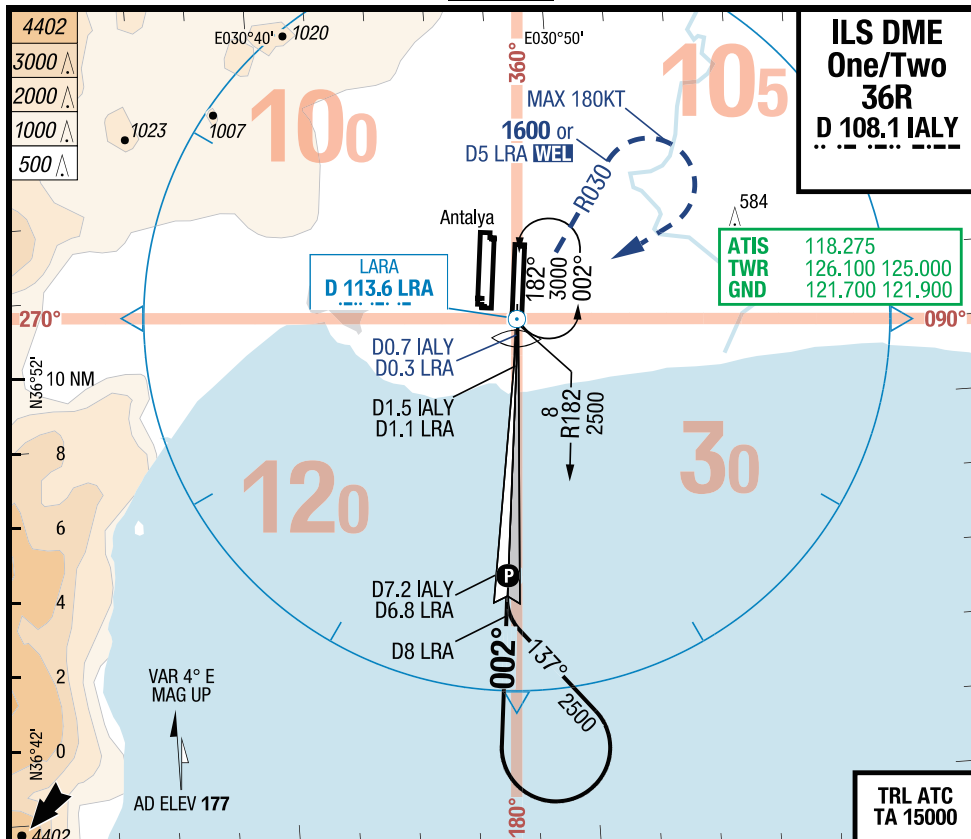
Turkey Antalya Antalya intl.

IAC

AYT-LTAI

7-70

ILS DME One/Two 36R



36R		Cat 2 DME 1)	Cat 1 DME 2)	LOC DME 2)		Circling
C	ft - m/km ft	100 - 350R 100 RA	200 - 550 360	470 - 1.2 620		830 - 2.4V 1000
D	ft - m/km ft	100 - 350R 100 RA	200 - 550 360	470 - 1.6 620		830 - 3.6V 1000

1) Approach TWO only      2) Approach ONE only

Nur für die Flugsimulation! Nicht für die reale Navigation verwenden!  
 For flight simulation only! Do not use for real navigation!

IAC

Antalya intl. Antalya Turkey

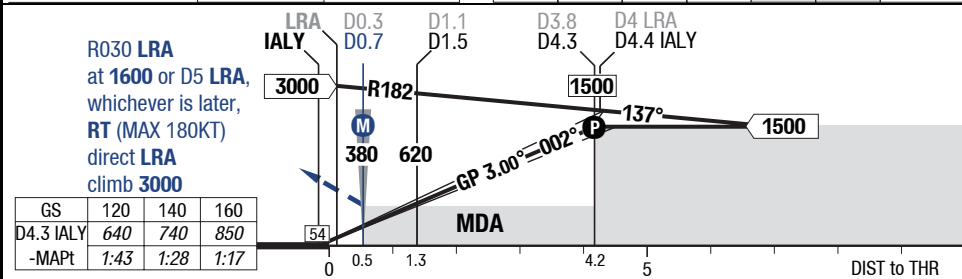
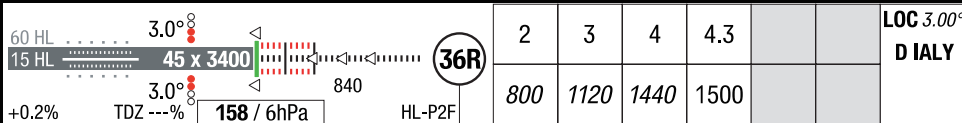
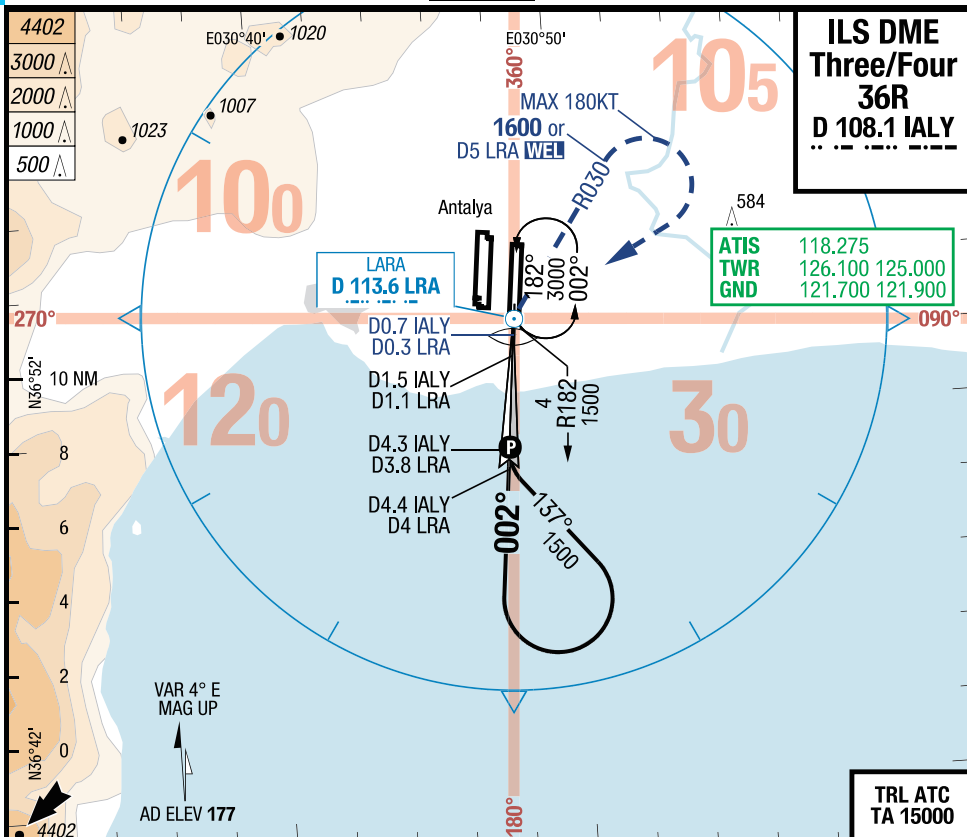
Effective 22-OCT-2009

15-OCT-2009

ILS DME Three/Four 36R

7-80

LTAI-AYT



36R	Cat 2 DME 1)	Cat 1 DME 2)	LOC DME 2)			Circling
C	ft - m/km ft	100 - 350R 100 RA	200 - 550 360	470 - 1.2 620		830 - 2.4V 1000
D	ft - m/km ft	100 - 350R 100 RA	200 - 550 360	470 - 1.6 620		830 - 3.6V 1000

1) Approach FOUR only

2) Approach THREE only

Nur für die Flugsimulation! Nicht für die reale Navigation verwenden!  
 For flight simulation only! Do not use for real navigation!

Effective 08-APR-2010  
 01-APR-2010

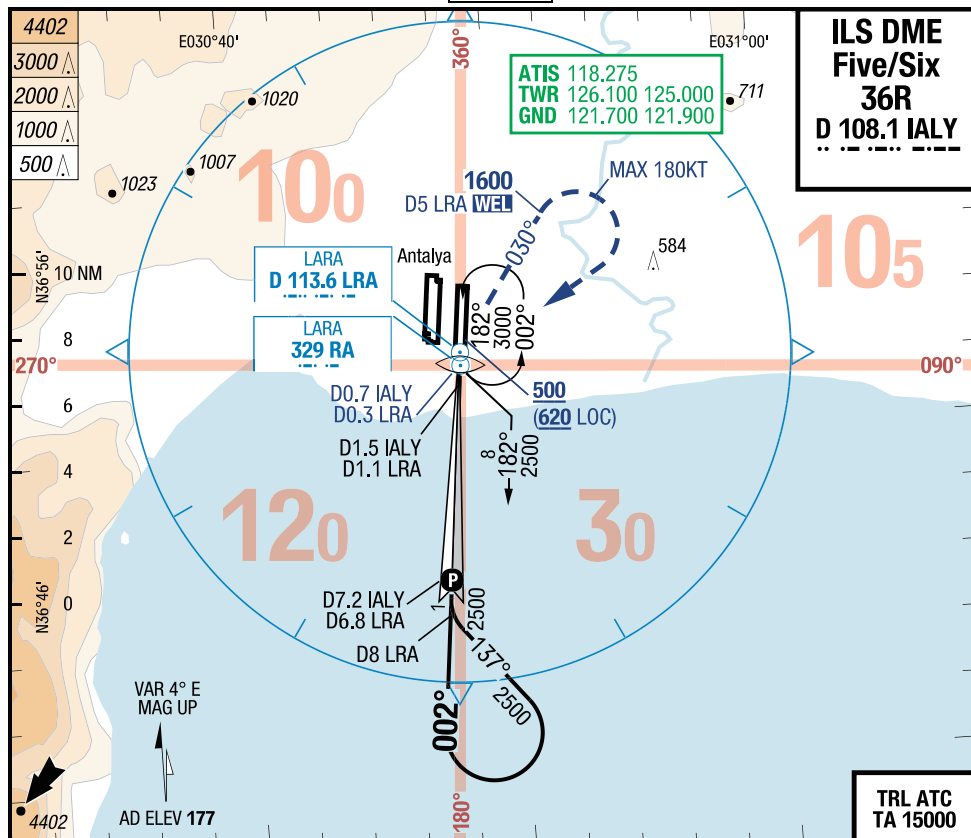
Turkey Antalya Antalya intl.

IAC

AYT-LTAI

7-90

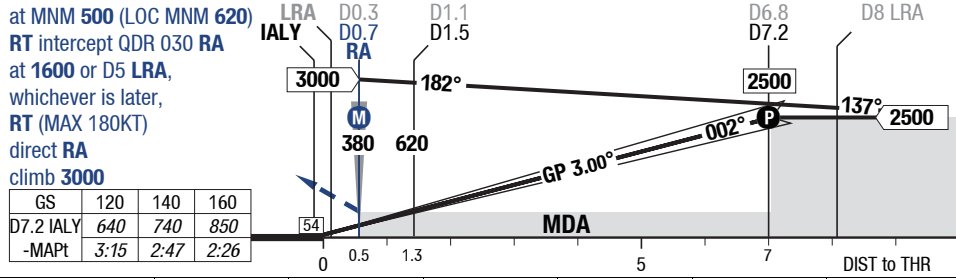
ILS DME Five/Six 36R



**ILS DME  
 Five/Six  
 36R**  
**D 108.1 IALY**

**TRL ATC  
 TA 15000**

60 HL	3.0°	45 x 3400	840	2	3	4	5	6	7.2	LOC 3.00° D IALY
15 HL	3.0°	158 / 6hPa	HL-P2F	800	1120	1440	1760	2070	2500	



36R		Cat 2 DME 1)	Cat 1 DME 2)	LOC DME 2)		Circling
C	ft - m/km ft	100 - 350R 100 RA	200 - 550 360	470 - 1.2 620		830 - 2.4V 1000
D	ft - m/km ft	100 - 350R 100 RA	200 - 550 360	470 - 1.6 620		830 - 3.6V 1000

1) Approach SIX only      2) Approach FIVE only



IAC

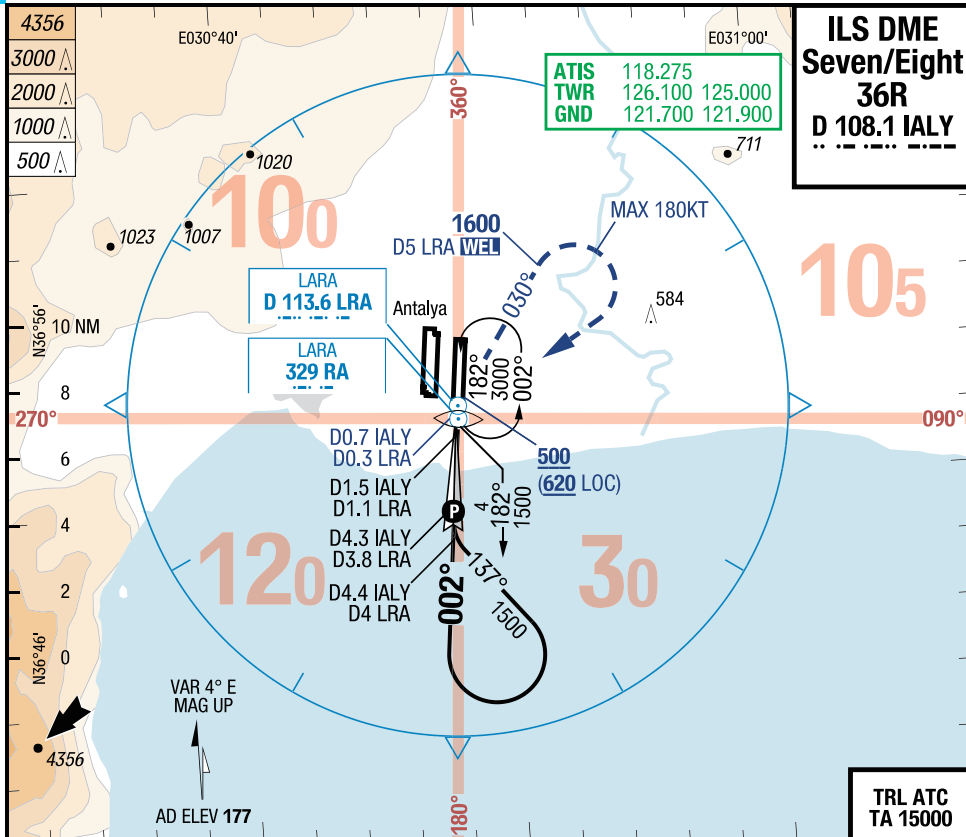
Antalya intl. **Antalya Turkey**

Effective **08-APR-2010**

**01-APR-2010**

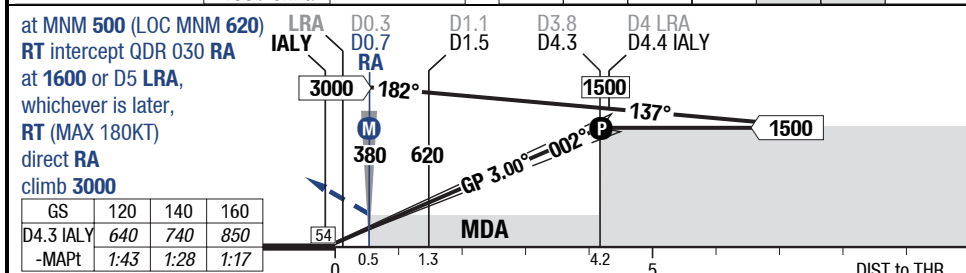
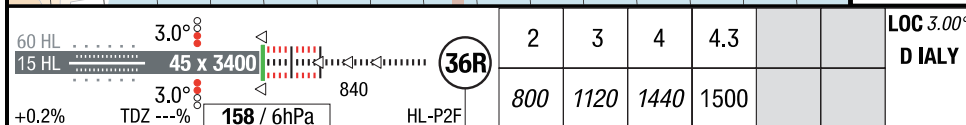
**ILS DME Seven/Eight 36R** **7-100**

**LTAI-AYT**



**ILS DME  
Seven/Eight  
36R  
D 108.1 IALY**

**TRL ATC  
TA 15000**



36R	Cat 2 DME <sup>1)</sup>	Cat 1 DME <sup>2)</sup>	LOC DME <sup>2)</sup>	Circling	
				830 - 2.4V	1000
C	ft - m/km ft	100 - 350R <b>100</b> RA	200 - 550 <b>360</b>	470 - 1.2 <b>620</b>	830 - 2.4V <b>1000</b>
D	ft - m/km ft	100 - 350R <b>100</b> RA	200 - 550 <b>360</b>	470 - 1.6 <b>620</b>	830 - 3.6V <b>1000</b>

1) Approach EIGHT only

2) Approach SEVEN only

Nur für die Flugsimulation! Nicht für die reale Navigation verwenden!  
 For flight simulation only! Do not use for real navigation!

Effective 08-APR-2010  
 01-APR-2010

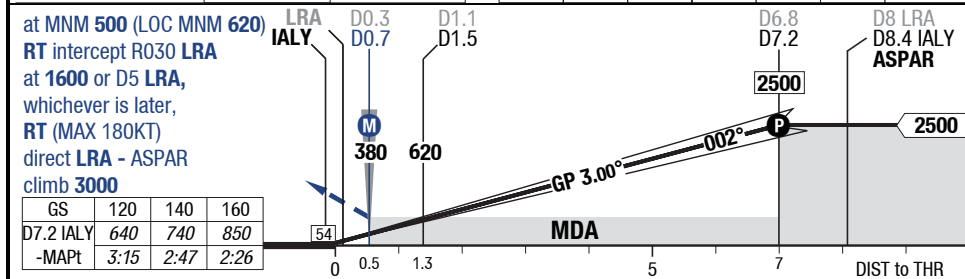
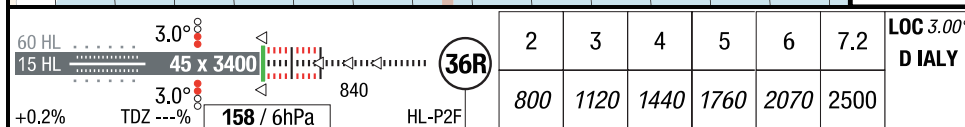
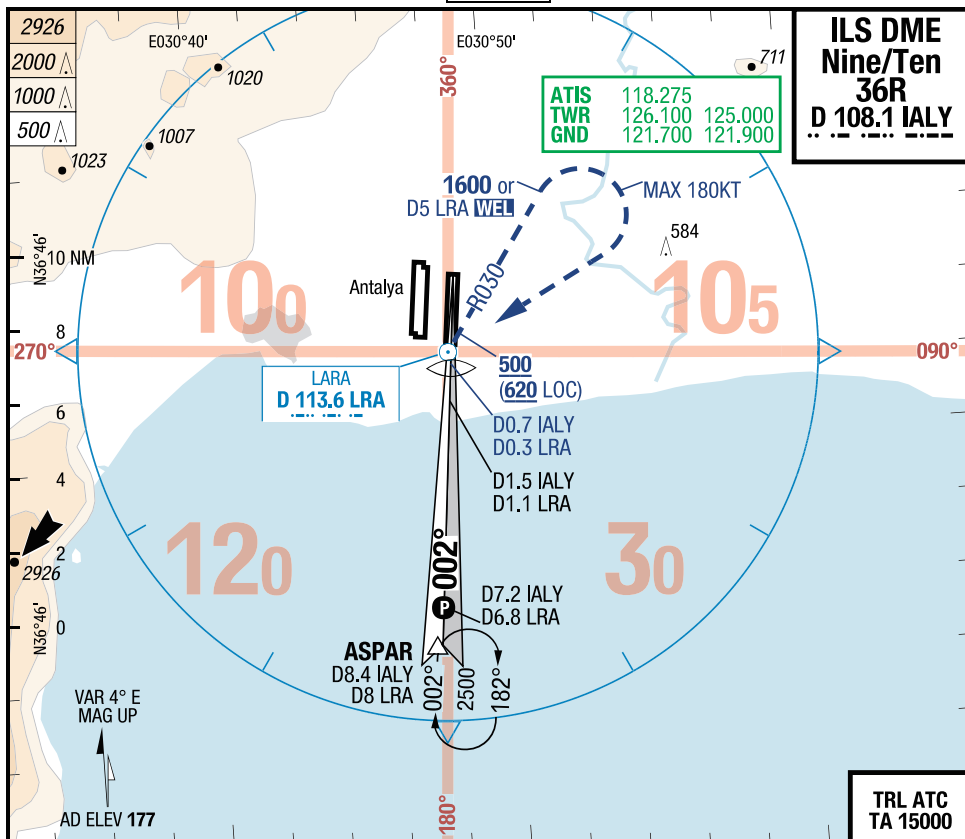
Turkey Antalya Antalya intl.

IAC

AYT-LTAI

7-110

ILS DME Nine/Ten 36R



36R		Cat 2 DME <sup>1)</sup>	Cat 1 DME <sup>2)</sup>	LOC DME <sup>2)</sup>	Circling
C	ft - m/km ft	100 - 350R 100 RA	200 - 550 360	470 - 1.2 620	830 - 2.4V 1000
D	ft - m/km ft	100 - 350R 100 RA	200 - 550 360	470 - 1.6 620	830 - 3.6V 1000

1) Approach TEN only 2) Approach NINE only

Nur für die Flugsimulation! Nicht für die reale Navigation verwenden!  
 For flight simulation only! Do not use for real navigation!

IAC

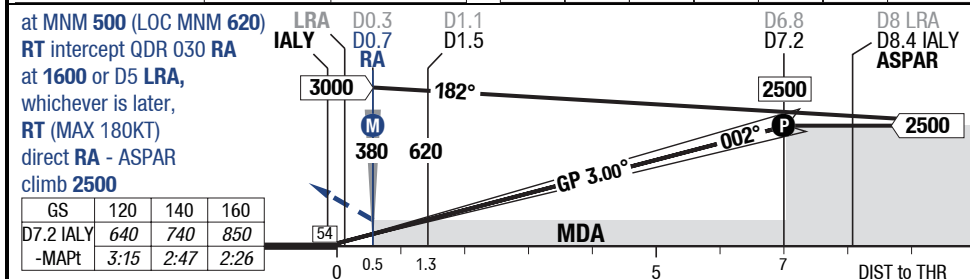
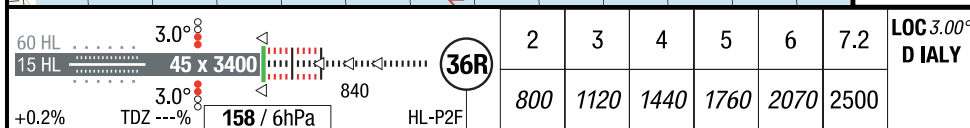
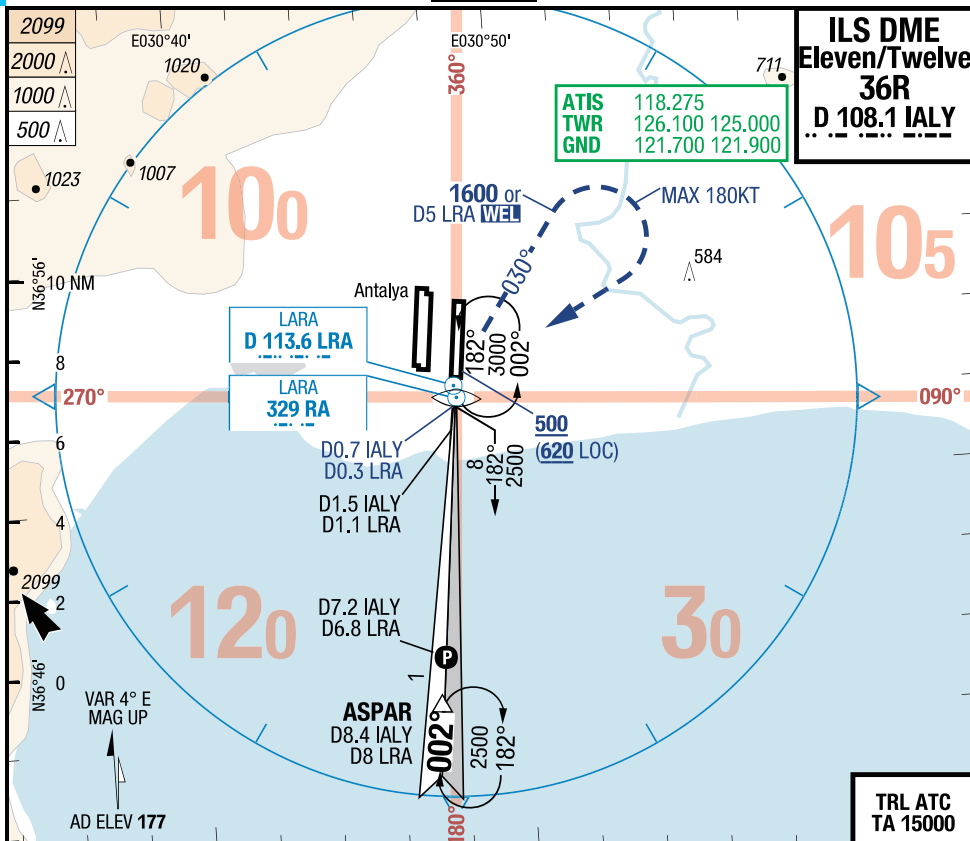
# Antalya intl. Antalya Turkey

Effective 08-APR-2010

01-APR-2010

## ILS DME Eleven/Twelve 36R 7-120

LTAI-AYT



36R		Cat 2 DME 1)	Cat 1 DME 2)	LOC DME 2)		Circling
C	ft - m/km ft	100 - 350R 100 RA	200 - 550 360	470 - 1.2 620		830 - 2.4V 1000
D	ft - m/km ft	100 - 350R 100 RA	200 - 550 360	470 - 1.6 620		830 - 3.6V 1000

1) Approach TWELVE only 2) Approach ELEVEN only

Nur für die Flugsimulation! Nicht für die reale Navigation verwenden!  
 For flight simulation only! Do not use for real navigation!

Effective 14-JAN-2010  
 07-JAN-2010

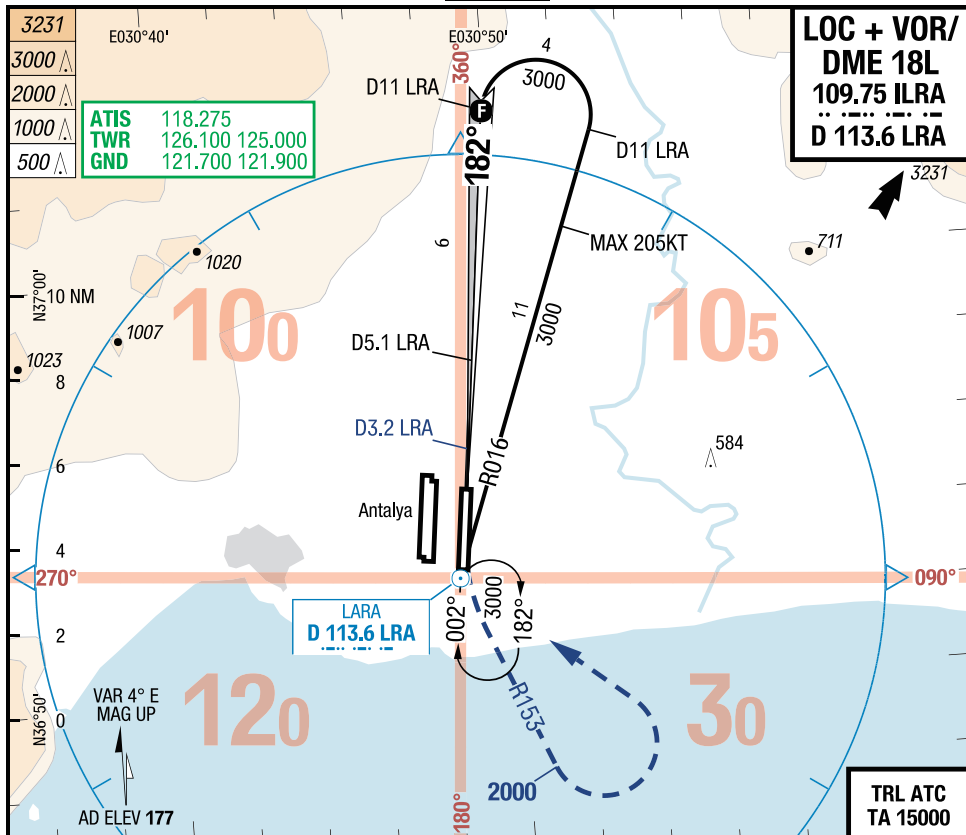
Turkey Antalya Antalya intl.

IAC

AYT-LTAI

7-130

LOC + VOR/DME 18L

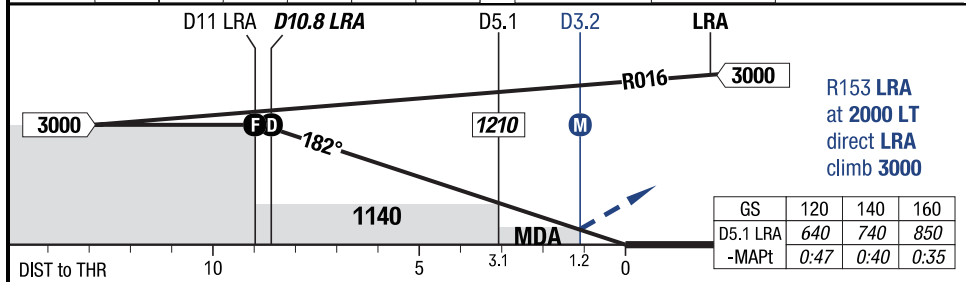


**LOC + VOR/  
 DME 18L**  
 109.75 ILRA  
 D 113.6 LRA

TRL ATC  
 TA 15000

3.00° D LRA	10.8	9	8	7	6	4		3.0°	60 HL
	3000	2440	2120	1800	1480	850		3400 x 45	15 HL

HL-P2F 176 / 6hPa TDZ ---% -0.2%



18L		LOC DME LRA				Circling
C	ft - m/km ft	450 - 1.0 620				830 - 2.4V 1000
D	ft - m/km ft	450 - 1.4 620				830 - 3.6V 1000

Nur für die Flugsimulation! Nicht für die reale Navigation verwenden!  
 For flight simulation only! Do not use for real navigation!

IAC

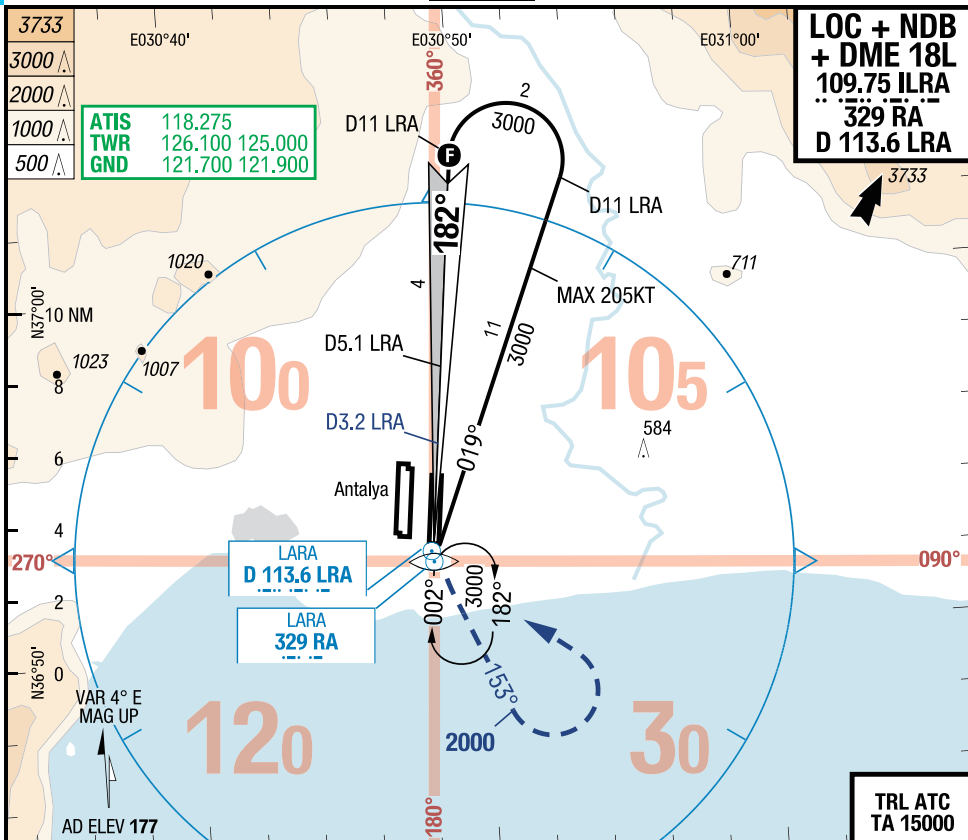
# Antalya intl. Antalya Turkey

Effective 14-JAN-2010

07-JAN-2010

LOC + NDB + DME 18L 7-140

LTAI-AYT

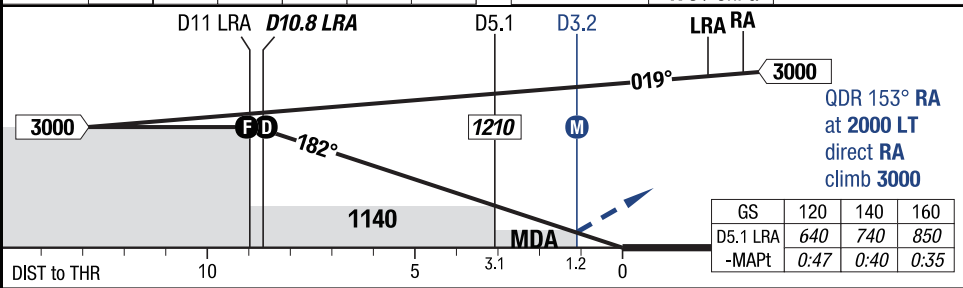


**LOC + NDB + DME 18L**  
 109.75 ILRA  
 329 RA  
 D 113.6 LRA

LARA  
 D 113.6 LRA  
 LARA  
 329 RA

TRL ATC  
 TA 15000

3.00°	10.8	9	8	7	6	4	
D LRA	3000	2440	2120	1800	1480	850	



18L		LOC DME LRA			Circling
C	ft - m/km ft	450 - 1.0 620			830 - 2.4V 1000
D	ft - m/km ft	450 - 1.4 620			830 - 3.6V 1000

Nur für die Flugsimulation! Nicht für die reale Navigation verwenden!  
 For flight simulation only! Do not use for real navigation!

Turkey **Antalya** Antalya intl.

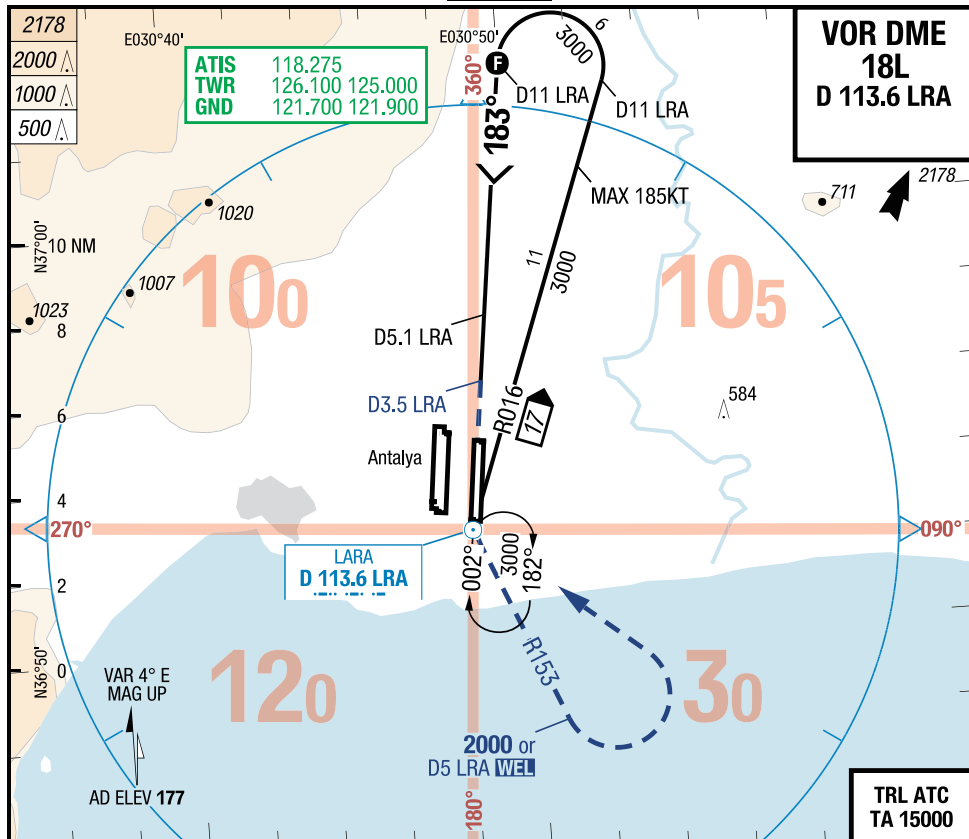
IAC

07-JAN-2010

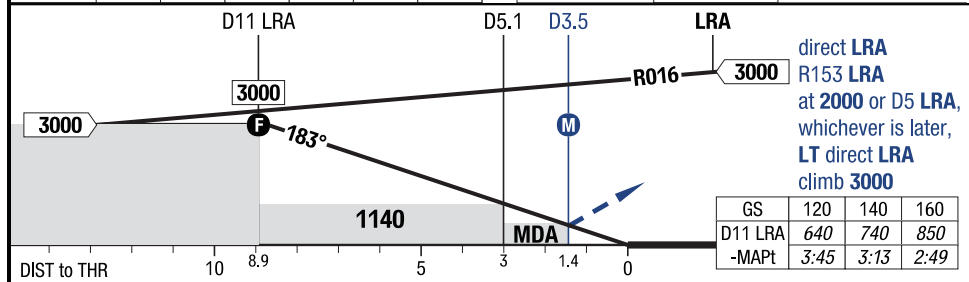
**AYT-LTAI**

**7-150**

**VOR DME 18L**



3.00°	11	8	7	6	5	4	 <b>18L</b>	 <b>3400 x 45</b>	 <b>3.00°</b>	 <b>60 HL</b>	 <b>15 HL</b>
D LRA	3000	2120	1800	1480	1170	850					
183°											
RWY 182°											



<b>18L</b>		<b>VOR DME</b>		<b>VOR DME</b>		<b>Circling</b>	
		APL U/S					
C	ft - m/km ft	450 - 1.6V <b>620</b>	450 - 2.3V <b>620</b>			830 - 3.8V <b>1000</b>	
D	ft - m/km ft	450 - 1.6V <b>620</b>	450 - 2.3V <b>620</b>			830 - 3.8V <b>1000</b>	

Nur für die Flugsimulation! Nicht für die reale Navigation verwenden!  
 For flight simulation only! Do not use for real navigation!

IAC

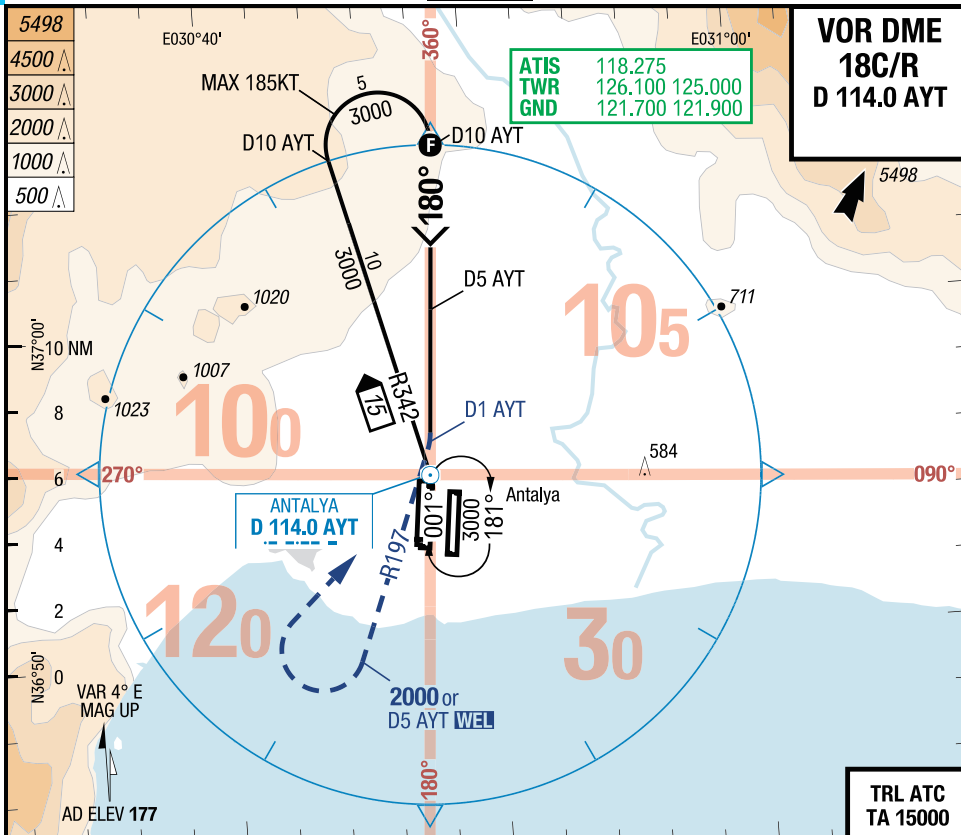
Antalya intl. **Antalya Turkey**

07-JAN-2010

**VOR DME 18C/R**

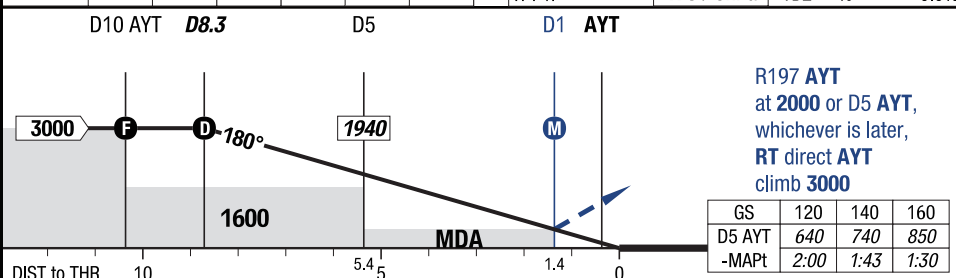
7-160

**LTAI-AYT**



**TRL ATC**  
**TA 15000**

3.00°	8.3	7	6	4	3	2	See AFC for RWY 18R information	3.0°	60 H
D AYT	3000	2570	2260	1620	1300	980		18C	3400 x 45
180°							H-P1F	176 / 6hPa	0.0%
RWY 182°									



18C/R	VOR DME 18C	VOR DME 18C APL U/S	VOR DME 18R	VOR DME 18R APL U/S	Circling
ft - m/km ft	450 - 1.6V 620	450 - 2.3V 620	450 - 2.5V 620	450 - 2.7V 620	830 - 3.8V 1000
ft - m/km ft	450 - 1.6V 620	450 - 2.3V 620	450 - 2.5V 620	450 - 2.7V 620	830 - 3.8V 1000

Nur für die Flugsimulation! Nicht für die reale Navigation verwenden!  
 For flight simulation only! Do not use for real navigation!

Effective 14-JAN-2010  
 07-JAN-2010

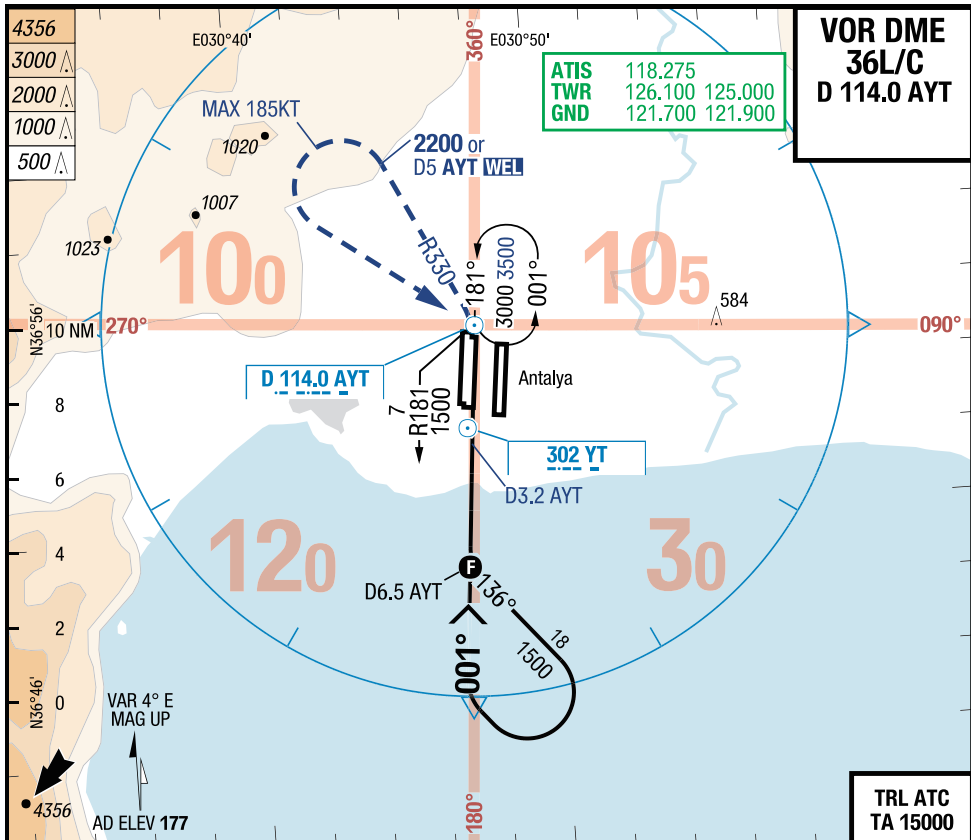
Turkey **Antalya** Antalya intl.

IAC

**AYT-LTAI**

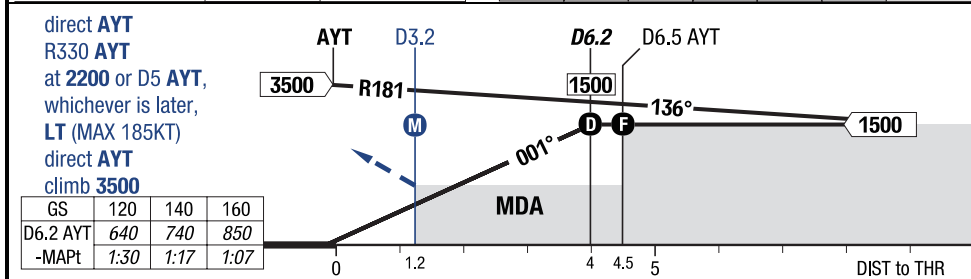
7-170

**VOR DME 36L/C**



TRL ATC  
 TA 15000

60 H	3.0°	See AFC for RWY 36L information	4	5	6.2			3.00°
TDZ ---%	3.0°		810	1130	1500			D AYT
		176 / 6hPa						001°
								RWY 002°



<b>36L/C</b>	<b>VOR DME</b>	<b>VOR DME</b> APL U/S			<b>Circling</b>
C	ft - m/km ft	420 - 1.5V <b>590</b>	420 - 2.2V <b>590</b>		830 - 3.8V <b>1000</b>
D	ft - m/km ft	420 - 1.5V <b>590</b>	420 - 2.2V <b>590</b>		830 - 3.8V <b>1000</b>



Nur für die Flugsimulation! Nicht für die reale Navigation verwenden!  
 For flight simulation only! Do not use for real navigation!

IAC

# Antalya intl. Antalya Turkey

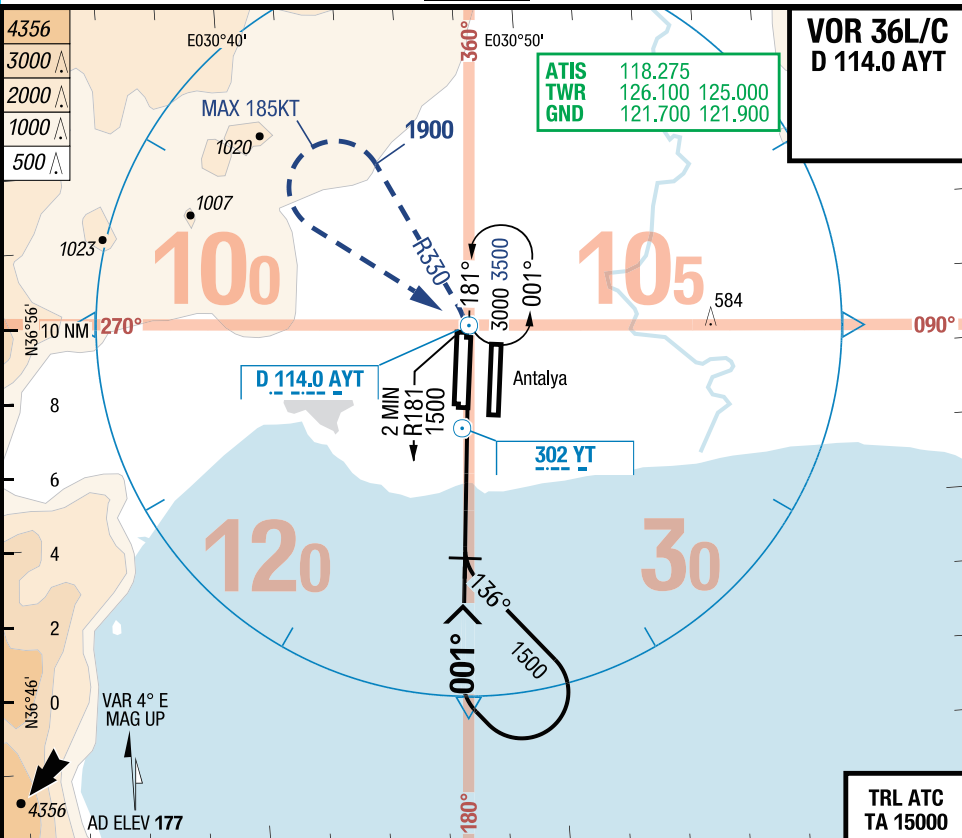
Effective 14-JAN-2010

07-JAN-2010

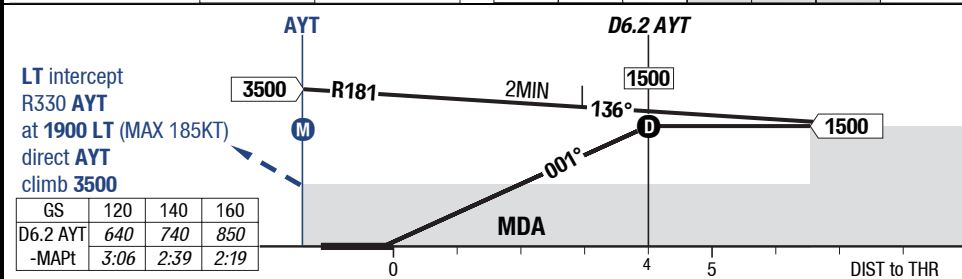
LTAI-AYT

VOR 36L/C

7-180



60 H	3.0°	See AFC for RWY 36L information	4	5	6.2			3.00°
45 x 3400	3.0°		810	1130	1500			D AYT
0.0%	TDZ ---%	176 / 6hPa						001°
								RWY 002°



36L/C	VOR	VOR APL U/S		Circling
C	ft - m/km ft	460 - 1.6V 630	460 - 2.3V 630	830 - 3.8V 1000
D	ft - m/km ft	460 - 1.6V 630	460 - 2.3V 630	830 - 3.8V 1000

Nur für die Flugsimulation! Nicht für die reale Navigation verwenden!  
 For flight simulation only! Do not use for real navigation!

Turkey **Antalya** Antalya intl.

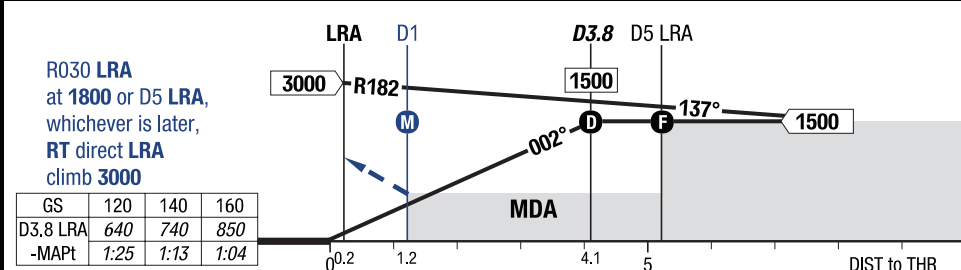
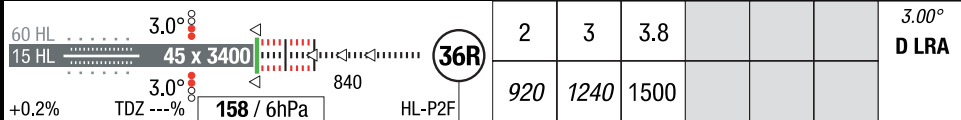
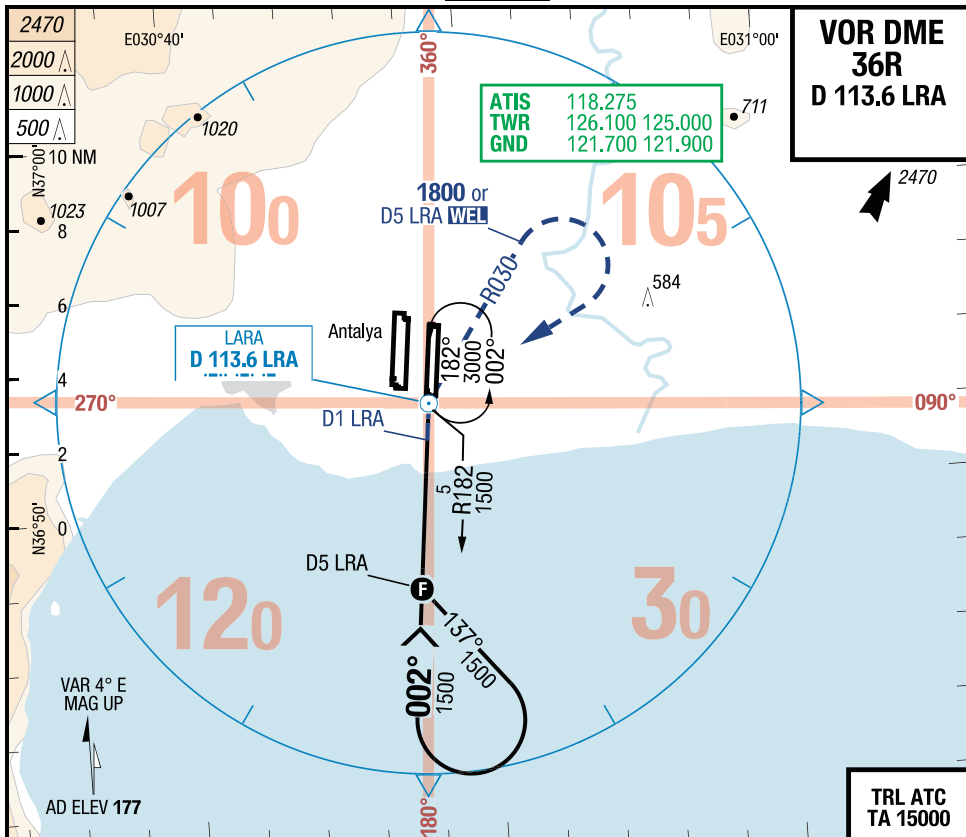
IAC

19-NOV-2009

**AYT-LTAI**

7-190

**VOR DME 36R**



36R		VOR DME	VOR DME			Circling
			APL U/S			
C	ft - m/km ft	440 - 1.6V 590	440 - 2.3V 590			830 - 3.8V 1000
D	ft - m/km ft	440 - 1.6V 590	440 - 2.3V 590			830 - 3.8V 1000

Nur für die Flugsimulation! Nicht für die reale Navigation verwenden!  
 For flight simulation only! Do not use for real navigation!

IAC

# Antalya intl. Antalya Turkey

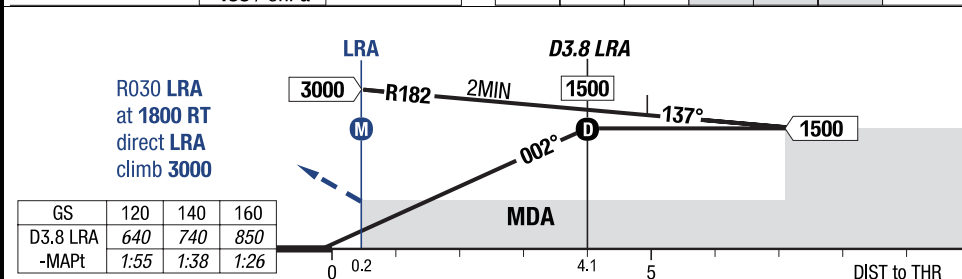
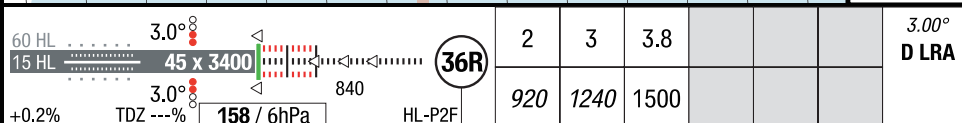
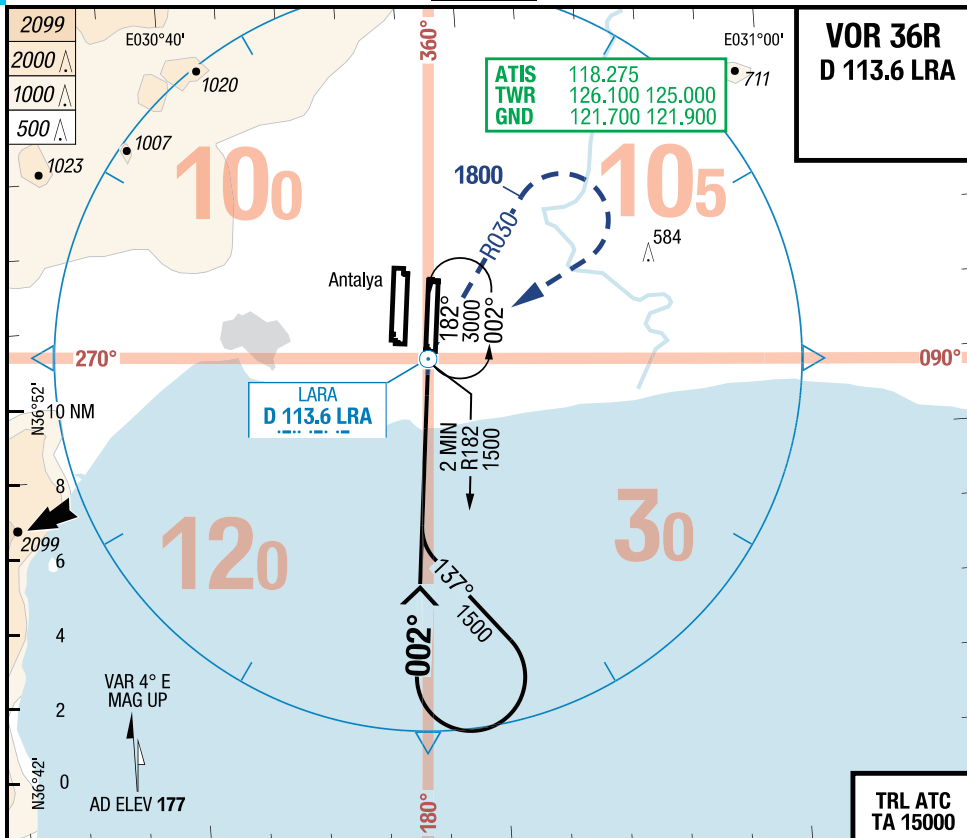
19-NOV-2009

LTAI-AYT

VOR 36R

7-200

VOR 36R  
D 113.6 LRA



36R		VOR	VOR APL U/S	Circling	
C	ft - m/km ft	470 - 1.7V 620	470 - 2.4V 620	830 - 3.8V 1000	
D	ft - m/km ft	470 - 1.7V 620	470 - 2.4V 620	830 - 3.8V 1000	

Nur für die Flugsimulation! Nicht für die reale Navigation verwenden!  
 For flight simulation only! Do not use for real navigation!

Effective 14-JAN-2010  
 07-JAN-2010

Turkey Antalya Antalya intl.

IAC

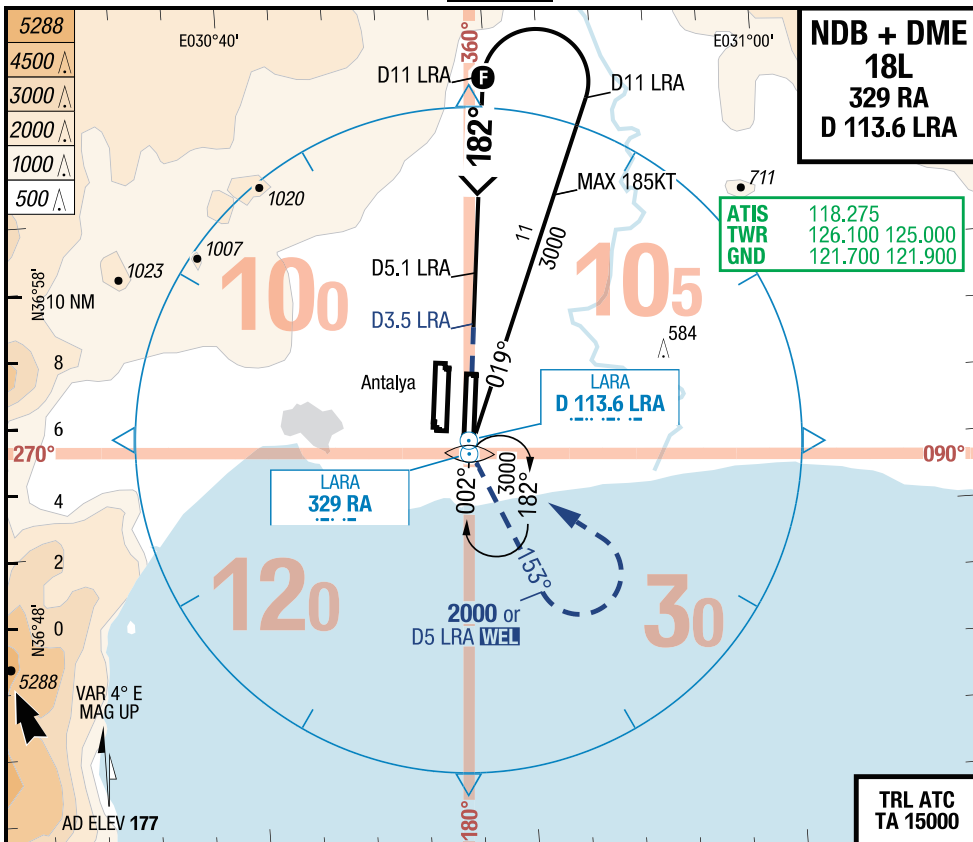
AYT-LTAI

7-210

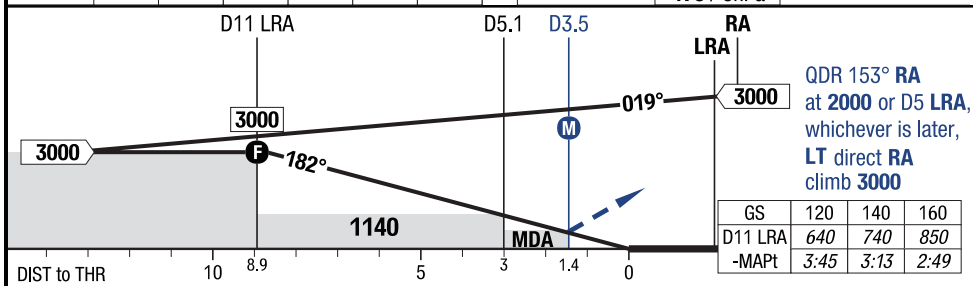
NDB + DME 18L

**NDB + DME 18L**  
**329 RA**  
**D 113.6 LRA**

**ATIS** 118.275  
**TWR** 126.100 125.000  
**GND** 121.700 121.900



3.00° D LRA	11	8	7	6	5	4	
	3000	2120	1800	1480	1160	850	



18L		NDB DME LRA	NDB DME LRA APL U/S	Circling	
C	ft - m/km ft	450 - 1.6V 620	450 - 2.3V 620	830 - 3.8V 1000	
D	ft - m/km ft	450 - 1.6V 620	450 - 2.3V 620	830 - 3.8V 1000	

Nur für die Flugsimulation! Nicht für die reale Navigation verwenden!  
 For flight simulation only! Do not use for real navigation!

IAC

# Antalya intl. Antalya Turkey

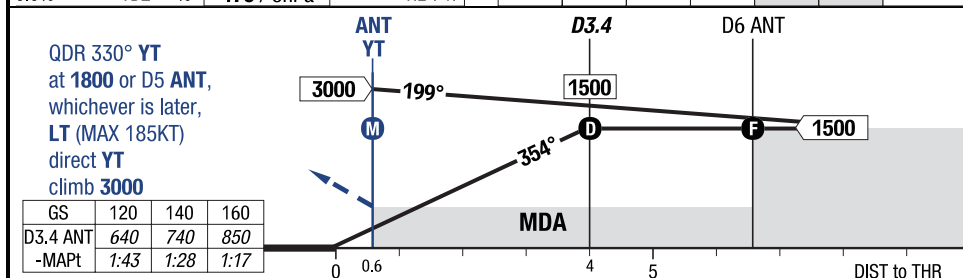
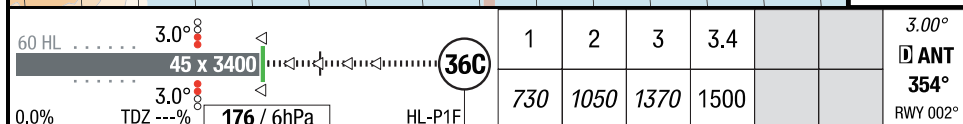
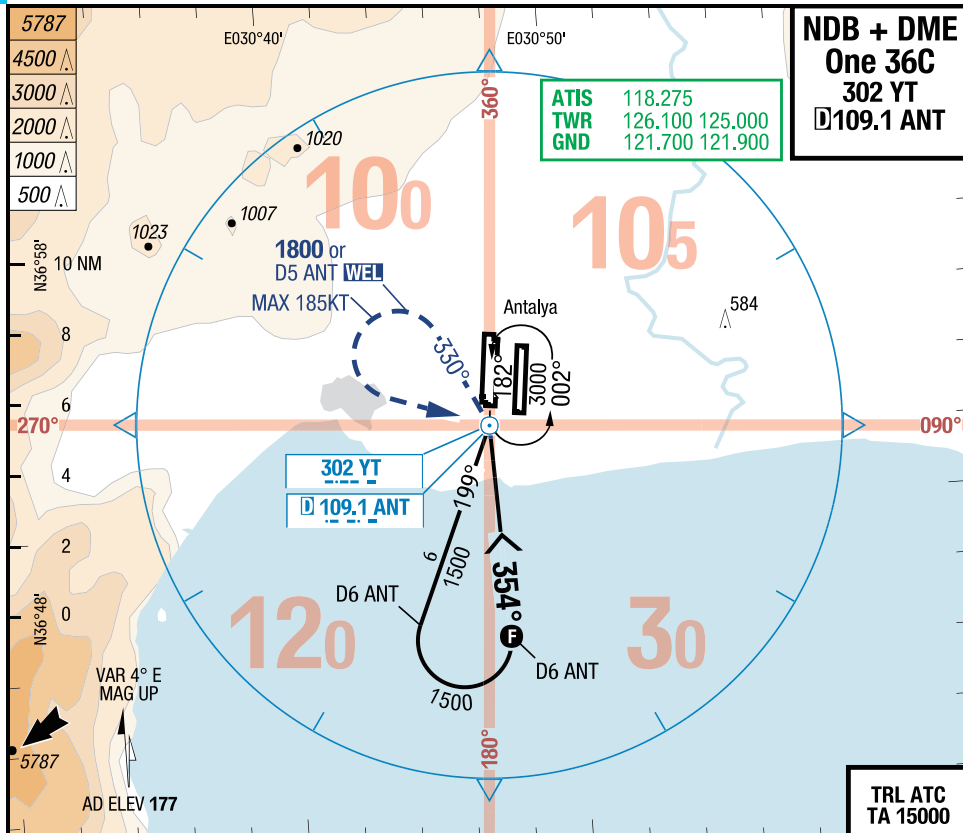
Effective 14-JAN-2010

07-JAN-2010

## NDB + DME One 36C

7-220

## LTAI-AYT



	36C	NDB DME YT	NDB DME YT APL U/S			Circling
C	ft - m/km ft	450 - 1.6V 620	450 - 2.3V 620			830 - 3.8V 1000
D	ft - m/km ft	450 - 1.6V 620	450 - 2.3V 620			830 - 3.8V 1000

Nur für die Flugsimulation! Nicht für die reale Navigation verwenden!  
 For flight simulation only! Do not use for real navigation!

Effective 14-JAN-2010  
 07-JAN-2010

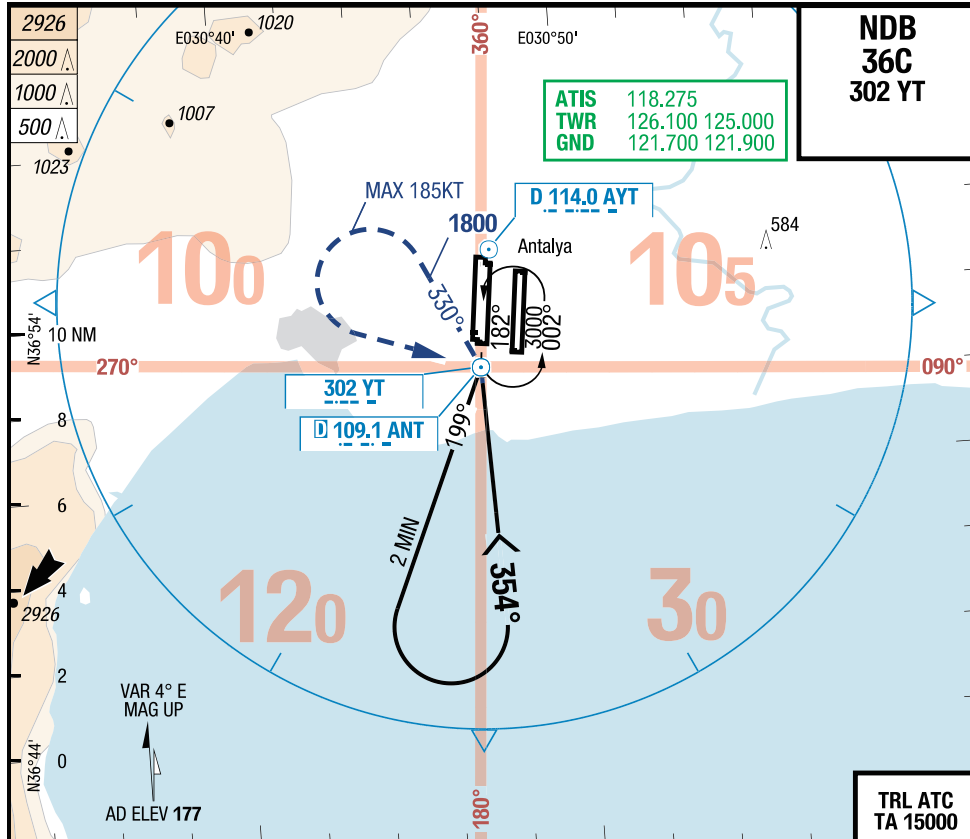
Turkey **Antalya** Antalya intl.

IAC

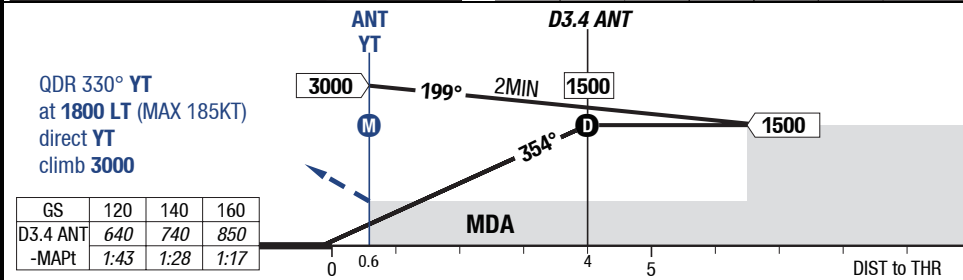
**AYT-LTAI**

**7-230**

**NDB 36C**



60 HL	3.00°								3.00°
45 x 3400									D ANT
									354°
0.0%	TDZ ---%	176 / 6hPa	HL-P1F	36C	1	2	3	3.4	RWY 002°
					730	1050	1370	1500	



<b>36C</b>		NDB	NDB APL U/S					Circling
C	ft - m/km ft	460 - 1.6V <b>630</b>	460 - 2.3V <b>630</b>					830 - 3.8V <b>1000</b>
D	ft - m/km ft	460 - 1.6V <b>630</b>	460 - 2.3V <b>630</b>					830 - 3.8V <b>1000</b>

Nur für die Flugsimulation! Nicht für die reale Navigation verwenden!  
 For flight simulation only! Do not use for real navigation!

IAC

Antalya intl. Antalya Turkey

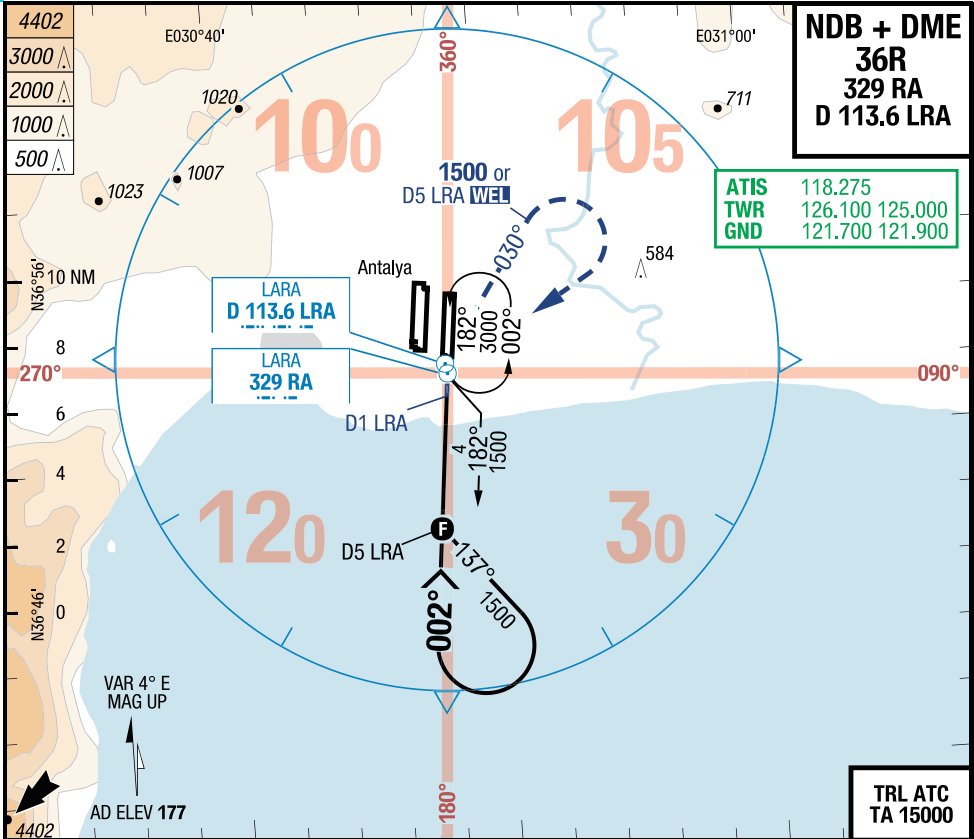
Effective 14-JAN-2010  
 07-JAN-2010  
 LTAI-AYT

NDB + DME 36R

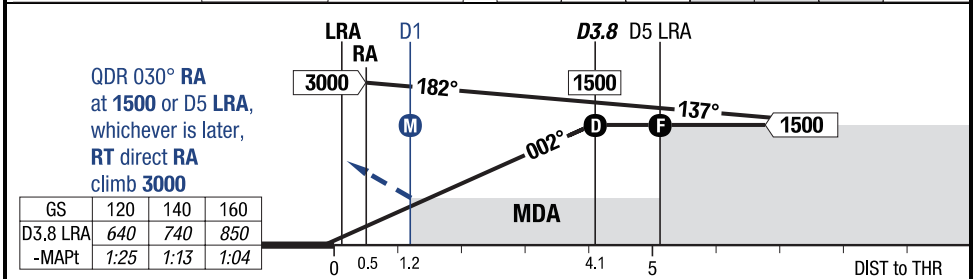
7-240

NDB + DME  
 36R  
 329 RA  
 D 113.6 LRA

ATIS 118.275  
 TWR 126.100 125.000  
 GND 121.700 121.900



60 HL	3.0°	45 x 3400	840	2	3	3.8				3.00°
15 HL	3.0°			920	1240	1500				D LRA
+0.2%	TDZ ---%	158 / 6hPa	HL-P2F							



36R	NDB DME LRA	NDB DME LRA APL U/S			Circling
C	ft - m/km ft	440 - 1.6V 590	440 - 2.3V 590		830 - 3.8V 1000
D	ft - m/km ft	440 - 1.6V 590	440 - 2.3V 590		830 - 3.8V 1000

Nur für die Flugsimulation! Nicht für die reale Navigation verwenden!  
 For flight simulation only! Do not use for real navigation!

Turkey **Antalya** Antalya intl.

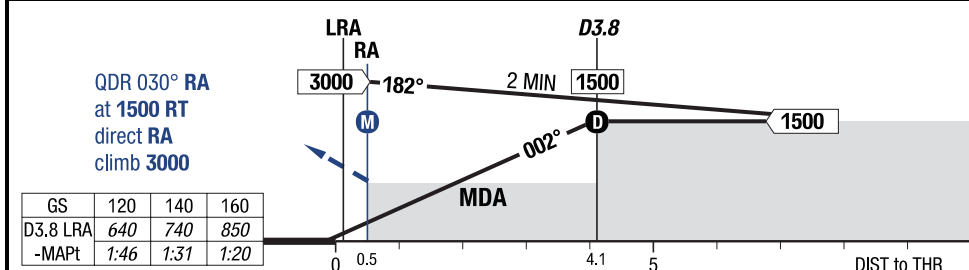
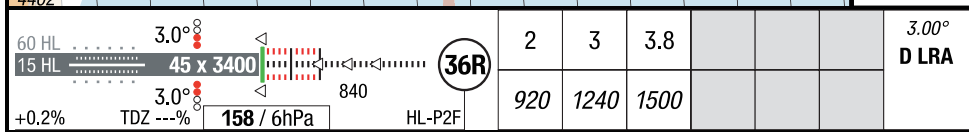
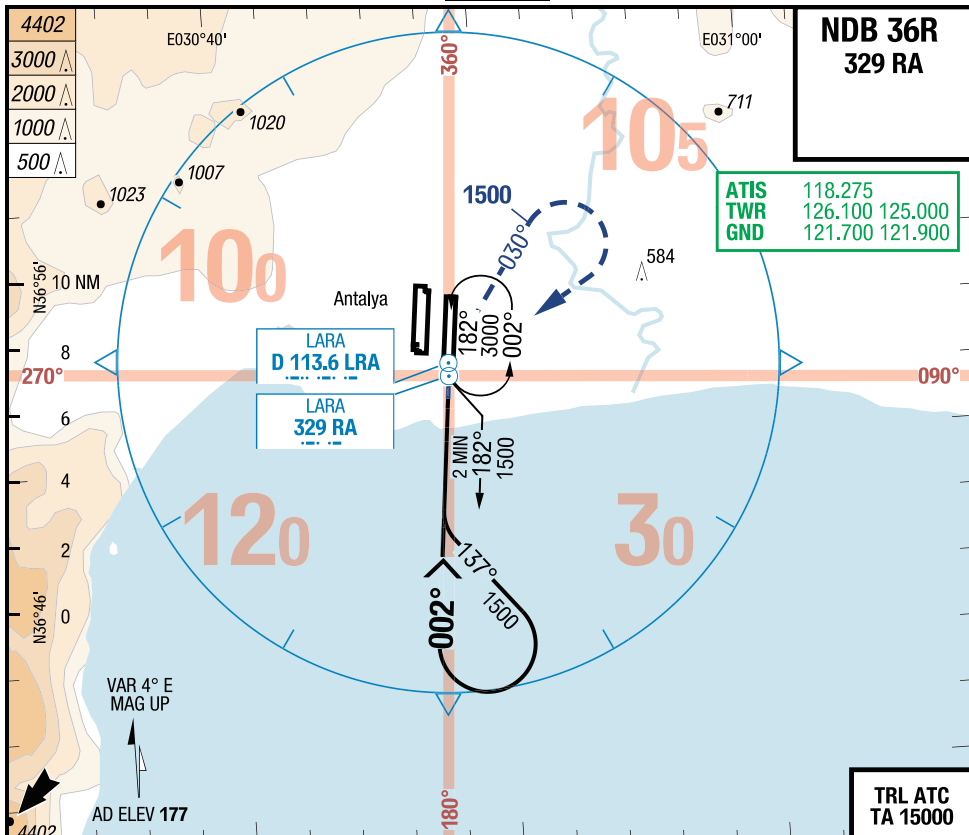
IAC

19-NOV-2009

**AYT-LTAI**

**7-250**

**NDB 36R**



<b>36R</b>		<b>NDB</b>	<b>NDB</b>		<b>Circling</b>
			<b>APL U/S</b>		
C	ft - m/km ft	470 - 1.7V <b>620</b>	470 - 2.4V <b>620</b>		830 - 3.8V <b>1000</b>
D	ft - m/km ft	470 - 1.7V <b>620</b>	470 - 2.4V <b>620</b>		830 - 3.8V <b>1000</b>



Nur für die Flugsimulation! Nicht für die reale Navigation verwenden!  
 For flight simulation only! Do not use for real navigation!

**IAC**

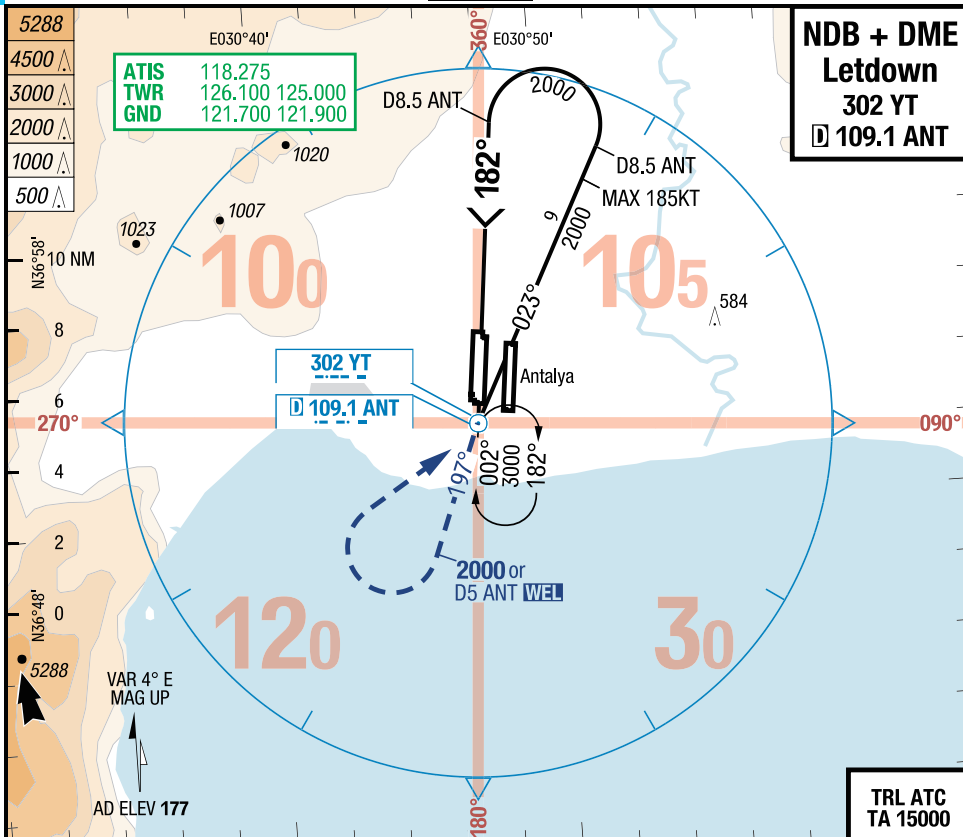
Antalya intl. **Antalya** Turkey

19-NOV-2009

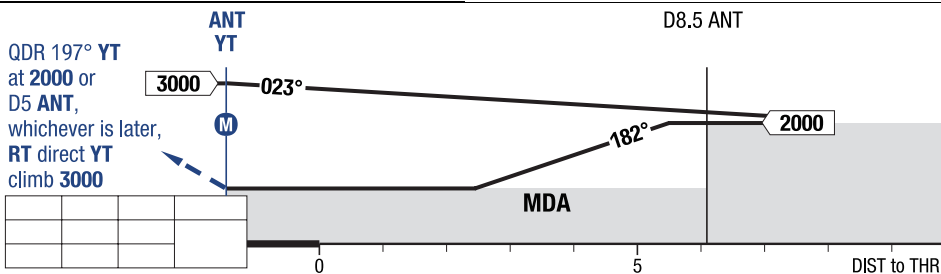
**NDB + DME Letdown**

**7-260**

**LTAI-AYT**



See AFC for RWY information and approach light system.



All RWYS		Letdown				Circling
C	ft - m/km ft	Straight-in Not authorized				830 - 3.8V 1000
D	ft - m/km ft	Straight-in Not authorized				830 - 3.8V 1000

Nur für die Flugsimulation! Nicht für die reale Navigation verwenden!  
 For flight simulation only! Do not use for real navigation!

Turkey **Antalya** Antalya intl.

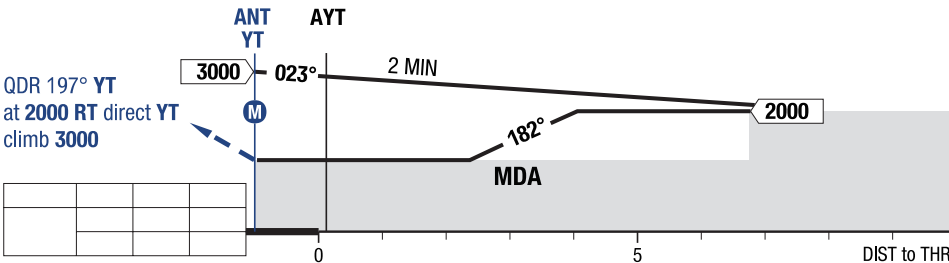
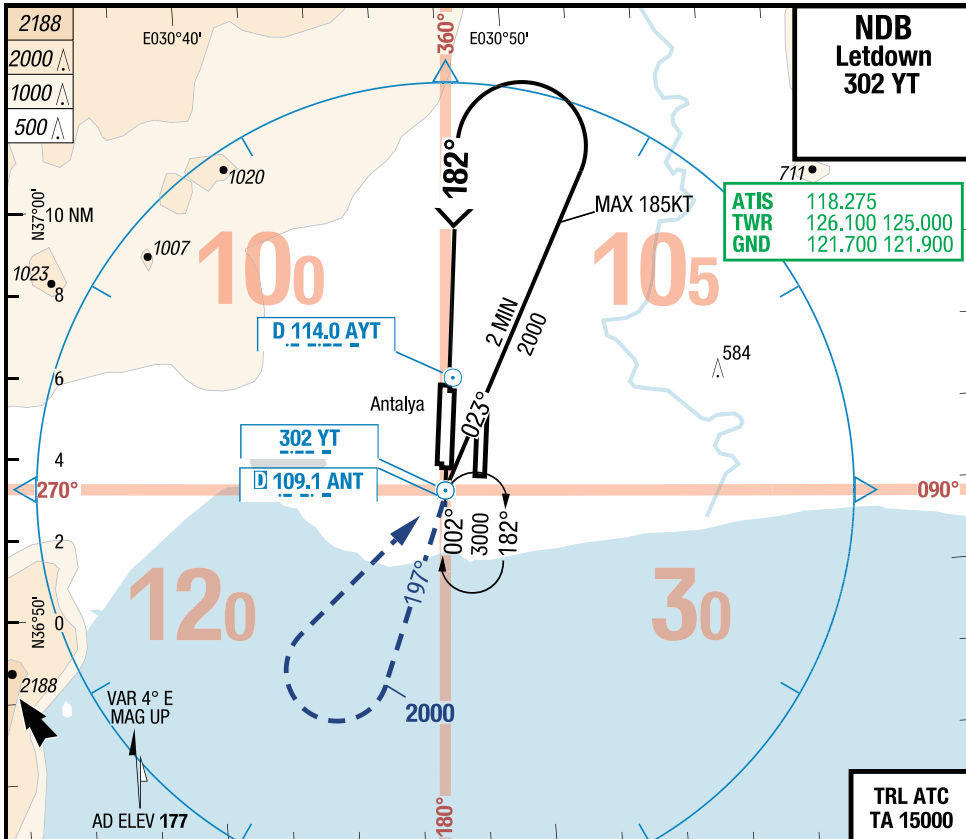
IAC

19-NOV-2009

AYT-LTAI

7-270

NDB Letdown



All RWYs		Letdown				Circling
C	ft - m/km ft	Straight-in Not authorized				830 - 3.8V <b>1000</b>
D	ft - m/km ft	Straight-in Not authorized				830 - 3.8V <b>1000</b>

# Iron Cross

# Edition



## RISE OF FLIGHT

*The First Great Air War*



Do you have what it takes to be an air ace?

Dip into the challenge with the new flight simulator "Rise of Flight". Exciting air battles at original locations of WWI will give you an exhilarating feeling while enjoying the highly detailed graphics, several game modes (for example single- or multiplayer mode), exciting campaigns and missions, detailed landscapes and many realistic special effects. Nine of the most famous planes of WWI such as the Spad XIII and the Fokker Dr.1 (the legendary aircraft of the Red Baron) are waiting for you within the 100.000 km<sup>2</sup> of the original western front line. Are you ready for this adventure?



[www.riseofflight.eu](http://www.riseofflight.eu)

Aerosoft GmbH • Airport Paderborn/Lippstadt • Lindberghring 12 • D-33142 Bueren Germany • Tel: +49 2955 7603-10, Fax: -33 • info@aerosoft.de • www.aerosoft.com